

1139 39 Series US Standard Bracket Series

PPR wheel(Pearlescent dark gray) wheel diameter × wheel width 75 x 31mm

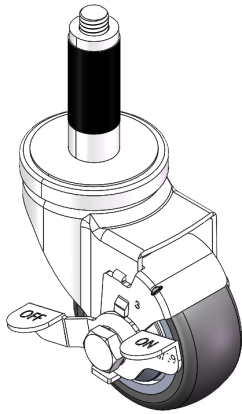
EAN

YJ-11390300266933

Castors with side brakes and locking system. Thread-riveted stamped feet — 1/2"-13
Surface zinc-plated, expansion mounting (ø21.6-ø24)
Impact-resistant polypropylene wheel core, thermoplastic elastomer (TPR) wheel tread
Pearl-finish dark grey, wheel bearings — precision ball.

Wheel tread: Thermoplastic rubber elastomer (TPR)
Wheel core: Made of high-quality impact-resistant polypropylene

Product descriptions are for reference only. The actual product shall prevail.



Picture may differ from original product

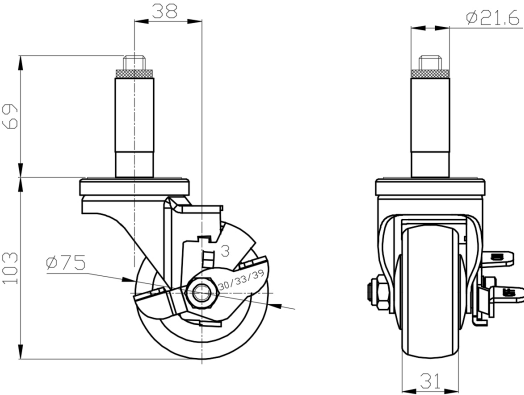
Technical Data

<input checked="" type="radio"/> Metric <input type="radio"/> Imperial	
Wheel Diameter	75mm
Wheel Width	31mm
Wheel Bearing	wheel equipped with ball bearings
Expansion Anchor Rod	21.6 x 69mm
Offset	38mm
Swivel Interference	160mm
Overall height	103mm
Swivel Radius	80mm
Hardness of tread	82±5° Shore A
Load capacity (dynamic)	90kgs
Load capacity (static)	135kgs
Temperature	-20°C to +60°C
Stand Style	Single Side Strike
Stainless steel	N/A
Conductive	N/A
Anti	N/A
Weight	0.78kgs
Standard	ISO22883

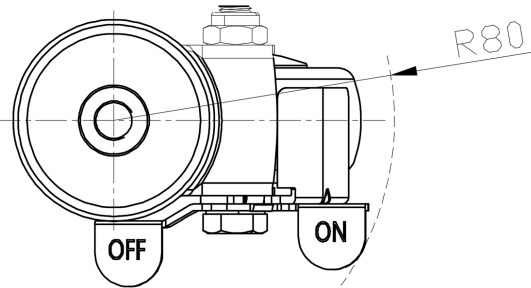
Advantages at a glance

Rolling Resistance	● ● ● ● ○
Operating Noise	● ● ● ● ○
Floor Surface Preservation	● ● ● ● ●

Dimensions



Mounting



Drawings are for reference only and may differ from the product.

* For any deviation between metric and imperial spec, please refer to the metric spec.