

1153 Series



WMRC Wheel 150 x 40mm (6" x 1-5/8")

EAN

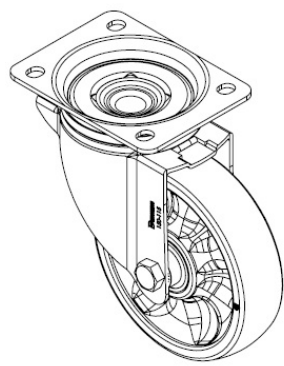
TW-4115306002033    KS-4115306002033

YJ-110203004098    VN-4115306002033

European standard base plate, with a specially designed frame structure for high load capacity, 3.5mm thick plate, and flexible rotation, suitable for medium and heavy- duty trolleys.

Thermoplastic rubber elastomer (TPR)  
High-quality impact-resistant polypropylene

Product descriptions are for reference only. The actual product shall prevail.



Picture may differ from original product

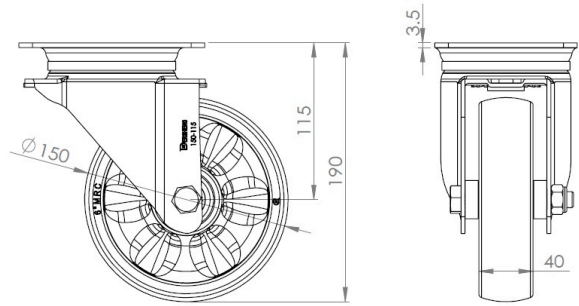
Technical Data

<input checked="" type="radio"/> Metric <input type="radio"/> Imperial	
Wheel Diameter	150mm
Wheel Width	40mm
Wheel Bearing	wheel equipped with ball bearings
Plate size	137 x 105mm
Base plate hole spacing	105 x 77.5mm
Plate hole	13.5 x 12mm
Offset	54mm
Swivel Interference	260mm
Overall height	100mm
Swivel Radius	60mm
Hardness of tread	70° Shore A
Load capacity (dynamic)	200kgs
Load capacity (static)	100kgs
Temperature	-20°C to +60°C
Stand Style	Activity
Stainless steel	N/A
Conductive	Y · 導電值:10^2~10^4
Anti	N/A
Weight	0.5kgs
Standard	ISO22883

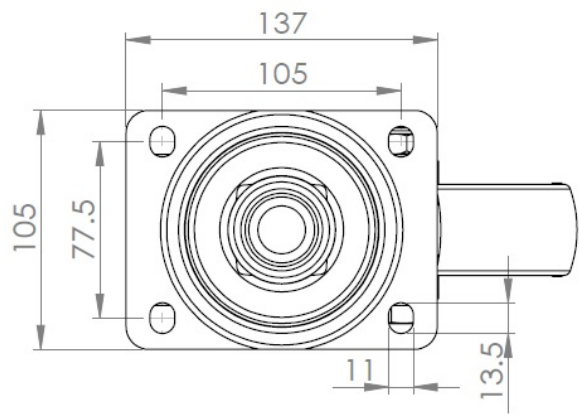
Advantages at a glance

Rolling Resistance	● ● ● ● ● ●
Operating Noise	● ● ● ● ● ●
Floor Surface Preservation	● ● ● ● ● ●

Dimensions



Mounting



Drawings are for reference only and may differ from the product.

\* For any deviation between metric and imperial spec, please refer to the metric spec.