

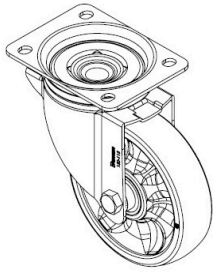
1153-EN

1153 Series

Wheel diameter × Wheel width 150 x 40mm (6" x 1-9/16")

EAN
4115306002033

Pressed steel caster horn/ housing designed for European market. Swivel easily with high performance total lock brake, suitable for medium and heavy duty logistic equipment.



Wheel Tread : TPU
Wheel center : PP

Picture may differ from original product

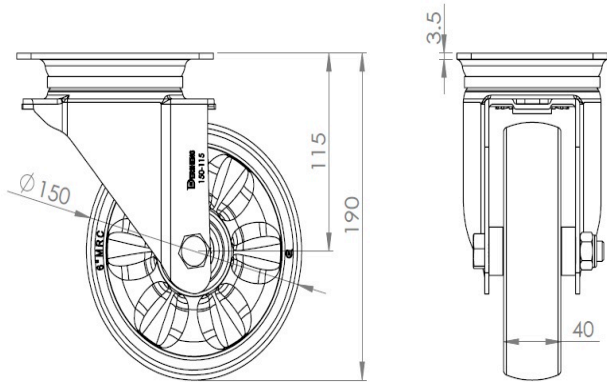
Technical Data

<input checked="" type="radio"/> Metric <input type="radio"/> Imperial	
Wheel Diameter	150mm
Wheel Width	40mm
Wheel Bearing	wheel equipped with ball bearings
Plate size	137 x 105mm
Plate hole centers	105 x 77.5mm
Plate hole	13.5 x 12mm
Offset	54mm
Swivel Interference	260mm
Overall height	130mm
Swivel Radius	60mm
Hardness of tread	70° Shore A
Load capacity (dynamic)	100kgs
Load capacity (static)	200kgs
Temperature	-20°C to +60°C
Stand Style	
Stainless steel	N/A
Conductive/Anti	N/A
Weight	2.5kgs
Standard	8

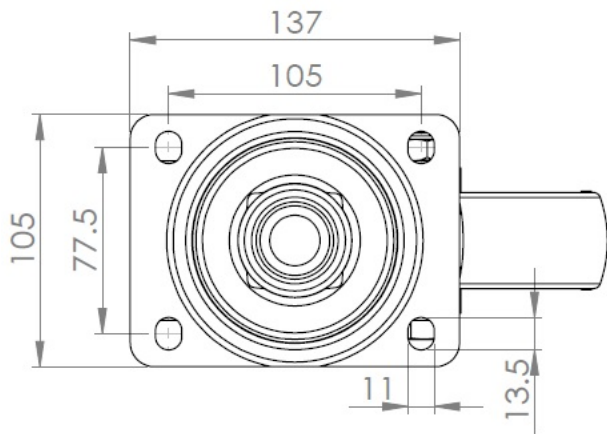
Advantages at a glance

smooth scrolling	(●●●●○)
volume	(●●●●○)
floor protection	(●●●○○)

Dimensions



Mounting



Drawings are for reference only and may differ from the product.

* For any deviation between metric and imperial spec, please refer to the metric spec.