

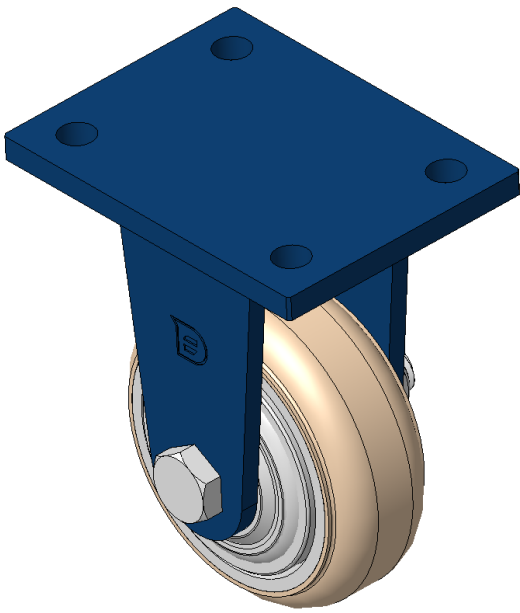


1102 B Type Caster Series

Non-marking NBR Rubber (milling) Wheel Diameter x Wheel Width 100 x 37mm

EAN

KS-11020400041111



Picture may differ from original product

Rigid Caster, Welded Caster Fork
Blue-painted finish, Mounting Type - Top Plate, 90x60 Bolt Hole Spacing
Cast Iron core, High-Quality, highly Resilient Rubber Wheel Tread, Cast Iron in natural color
Bearings—Ball Bearings

Wheel surface: Made of high-quality, highly elastic rubber
Wheel Center: iron core/cast iron core

Drawings are for reference only and may differ from the product

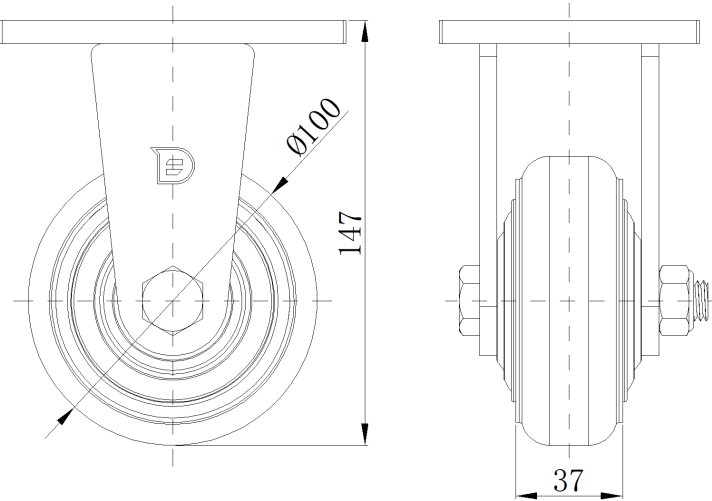
Technical Data

<input checked="" type="radio"/> Metric <input type="radio"/> Imperial	
Wheel Diameter	100mm
Wheel Width	37mm
Wheel Bearing	Wheels With Ball Bearings
Plate Size	120 x 90mm
Bolt Hole Spacing	90 x 60mm
Plate Hole	12mm
Overall Height	147mm
Hardness Of Tread	85±5° Shore A
Load Capacity (Dynamic)	200kgs
Load Capacity (Static)	300kgs
Temperature	-20°C to +80°C
Fork Type	Rigid Caster
Stainless	N/A
Electrical Conductivity	N/A
Anti-Static	N/A
Weight	2.19kgs
Standard	ISO22883

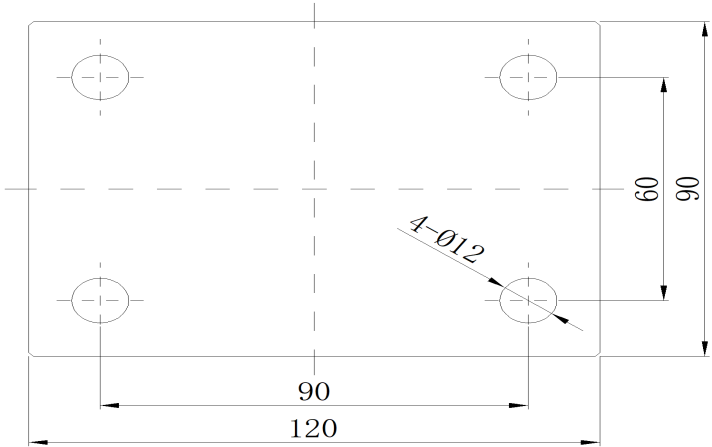
Advantages at a glance

Rolling Resistance	● ● ● ○ ○
Operating Noise	● ● ● ● ○
Floor Surface Preservation	● ● ● ● ○

Dimensions



Mounting



* For any deviation between metric and imperial spec, please refer to the metric spec.