



1102 B Type Caster Series

NBR (milling black) Wheel Diameter x Wheel Width 100 x 37mm

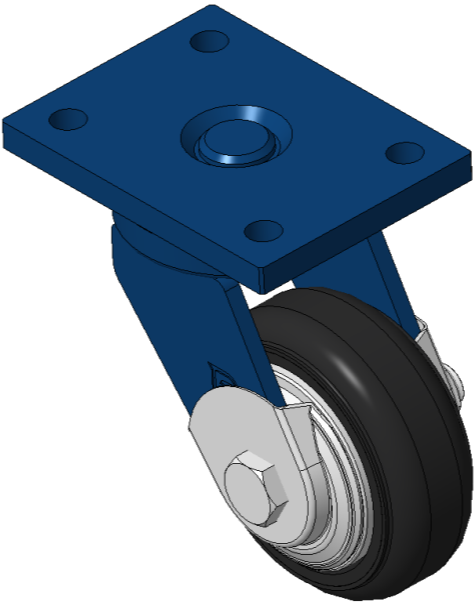
EAN

KS-11020400042021

Portable Casters, Welded Caster Fork—90x60mm Bolt Hole Spacing  
Blue painted finish, Mounting Type - Top Plate device  
Cast Iron Wheel Center, High-Quality, high-elasticity rubber Wheel Tread, Cast Iron black Bearings—Ball Bearings, equipped with special anti-winding wheel covers

Wheel surface: Made of high-quality, high-elasticity rubber  
Wheel Center: Iron core / Cast iron core

Drawings are for reference only and may differ from the product



Picture may differ from original product

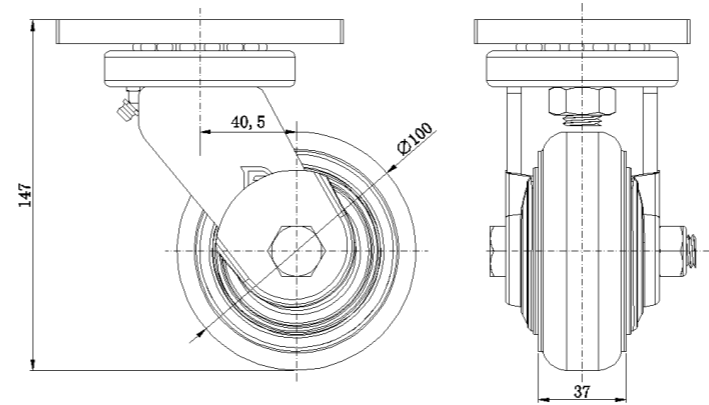
Technical Data

<input checked="" type="radio"/> Metric <input type="radio"/> Imperial	
Wheel Diameter	100mm
Wheel Width	37mm
Wheel Bearing	Wheels With Ball Bearings
Plate Size	120 x 90mm
Bolt Hole Spacing	90 x 60mm
Plate Hole	12mm
Offset	40.5mm
Swivel Interference	186mm
Overall Height	147mm
Swivel Radius	93mm
Hardness Of Tread	85±5° Shore A
Load Capacity (Dynamic)	200kgs
Load Capacity (Static)	300kgs
Temperature	-20°C to +80°C
Fork Type	Swivel Caster
Stainless	N/A
Electrical Conductivity	N/A
Anti-Static	N/A
Weight	2.83kgs
Standard	ISO22883

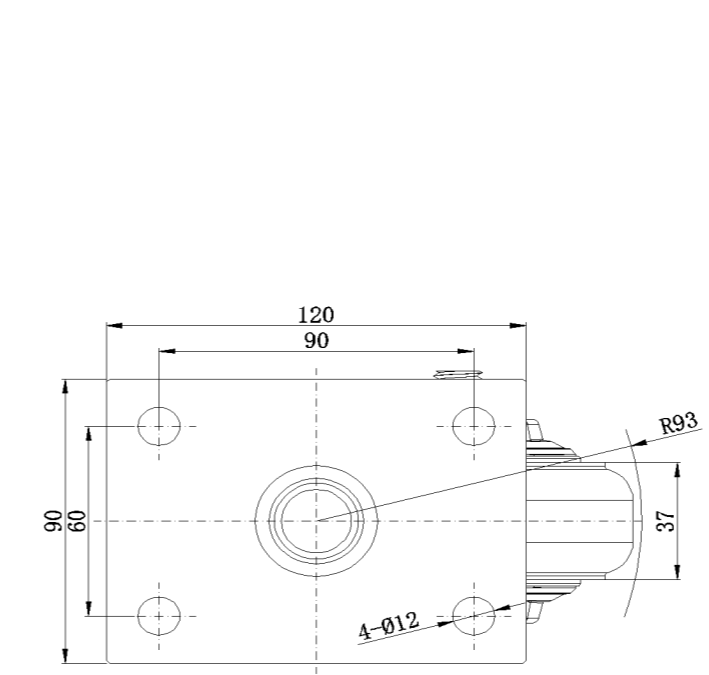
Advantages at a glance

Rolling Resistance	● ● ● ○ ○
Operating Noise	● ● ● ● ○
Floor Surface Preservation	● ● ● ● ○

Dimensions



Mounting



\* For any deviation between metric and imperial spec, please refer to the metric spec.