



1102 B Type Caster Series

Non-marking NBR Rubber (milling) Wheel Diameter x Wheel Width 100 x 37mm

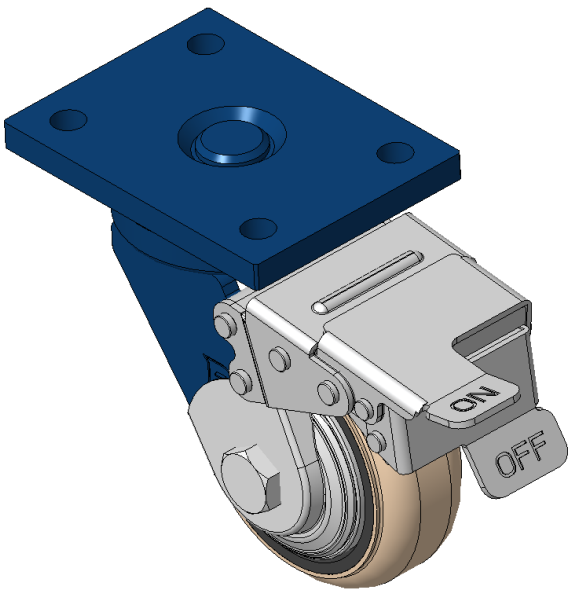
EAN

KS-11020400044161

Casters with front brake and With locking system, Welded Caster Fork
Blue-painted finish, Mounting Type - Top Plate, 90x60 Bolt Hole Spacing
Cast Iron Wheel Center, High-Quality, highly Resilient Rubber Wheel Tread, Cast Iron in natural color
Bearings—Ball Bearings with special Anti-thread wheel cover

Wheel surface: Made of high-quality, highly elastic rubber
Wheel Center: iron core/cast iron core

Drawings are for reference only and may differ from the product



Picture may differ from original product

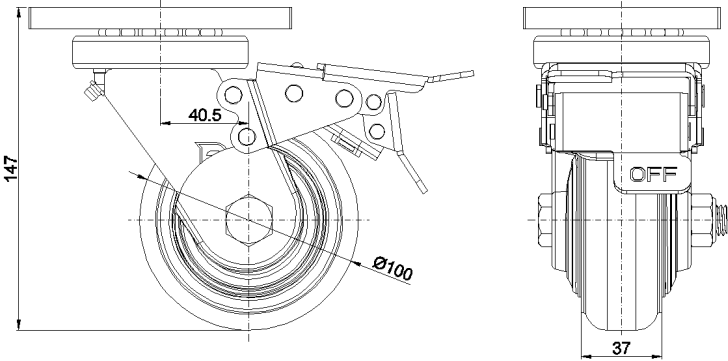
Technical Data

| | |
|--|--------------------------------|
| <input checked="" type="radio"/> Metric <input type="radio"/> Imperial | |
| Wheel Diameter | 100mm |
| Wheel Width | 37mm |
| Wheel Bearing | Wheels With Ball Bearings |
| Plate Size | 120 x 90mm |
| Bolt Hole Spacing | 90 x 60mm |
| Plate Hole | 12mm |
| Offset | 40.5mm |
| Swivel Interference | 296mm |
| Overall Height | 147mm |
| Swivel Radius | 148mm |
| Hardness Of Tread | 85±5° Shore A |
| Load Capacity (Dynamic) | 200kgs |
| Load Capacity (Static) | 300kgs |
| Temperature | -20°C to +80°C |
| Fork Type | Swivel Caster With Front Brake |
| Stainless | N/A |
| Electrical Conductivity | N/A |
| Anti-Static | N/A |
| Weight | 3.24kgs |
| Standard | ISO22883 |

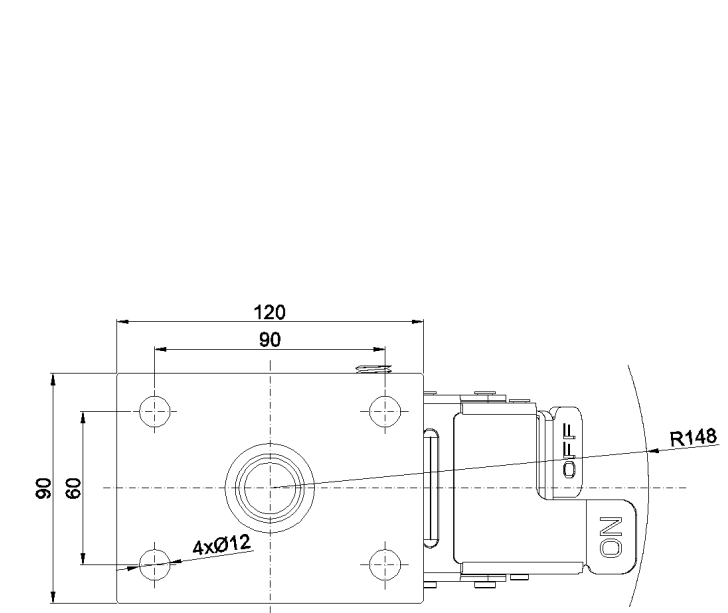
Advantages at a glance

| | |
|----------------------------|-----------|
| Rolling Resistance | ● ● ● ○ ○ |
| Operating Noise | ● ● ● ● ○ |
| Floor Surface Preservation | ● ● ● ● ○ |

Dimensions



Mounting



* For any deviation between metric and imperial spec, please refer to the metric spec.