



1102 B Type Caster Series

CPD Wheel Diameter × Wheel Width 100 x 32mm

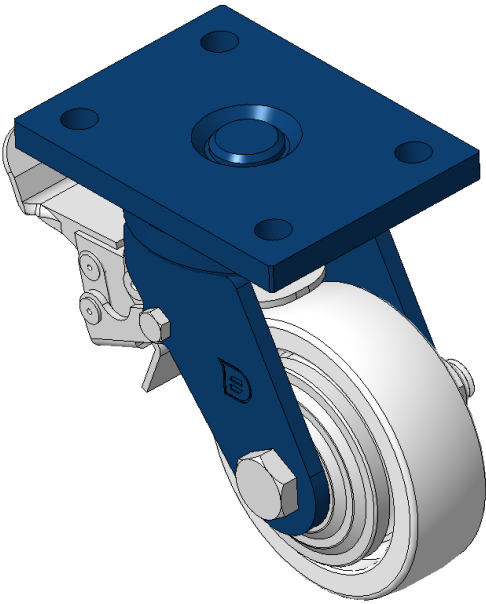
EAN

KS-11020400294031

Casters with rear brake and With locking system, Welded Caster Fork.
Blue-painted finish, Mounting Type - Top Plate, 90x60 Bolt Hole Spacing.
Polypropylene Wheel Center and Wheel Tread, natural color.
Bearings—Ball Bearings.

Wheel surface: PP polypropylene
Wheel Center: PP polypropylene

Drawings are for reference only and may differ from the product



Picture may differ from original product

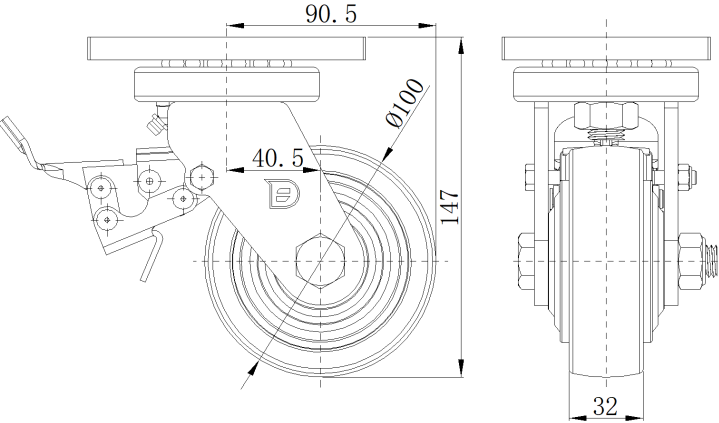
Technical Data

<input checked="" type="radio"/> Metric <input type="radio"/> Imperial	
Wheel Diameter	100mm
Wheel Width	32mm
Wheel Bearing	Wheels With Ball Bearings
Plate Size	120 x 90mm
Bolt Hole Spacing	90X60mm
Plate Hole	12mm
Offset	40.5mm
Swivel Interference	202mm
Overall Height	147mm
Swivel Radius	101mm
Hardness Of Tread	72±5° Shore D
Load Capacity (Dynamic)	200kgs
Load Capacity (Static)	300kgs
Temperature	-12°C to +60°C
Fork Type	Swivel Caster With Rear Brake
Stainless	N/A
Electrical Conductivity	N/A
Anti-Static	N/A
Weight	2.39kgs
Standard	ISO22883

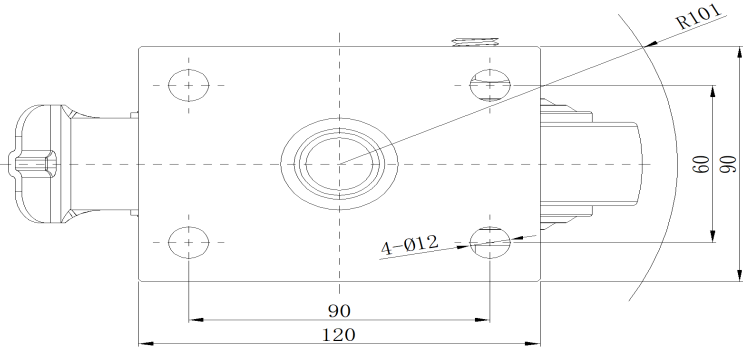
Advantages at a glance

Rolling Resistance	● ● ● ● ●
Operating Noise	● ● ● ○ ○
Floor Surface Preservation	● ● ● ○ ○

Dimensions



Mounting



* For any deviation between metric and imperial spec, please refer to the metric spec.