



1102 B Type Caster Series

PU (red round) Wheel Diameter x Wheel Width 100 x 34mm

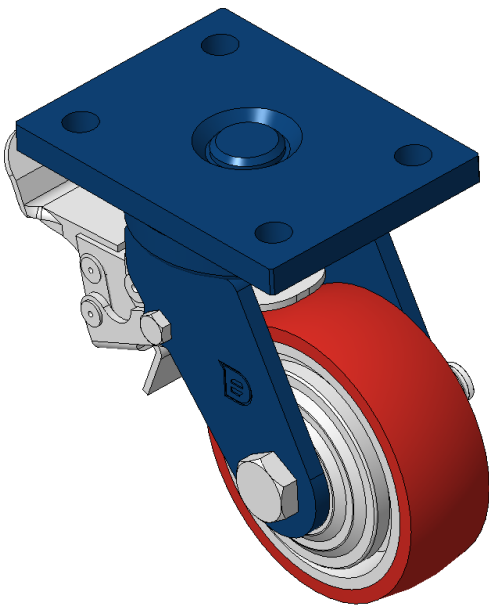
EAN

KS-11020400334111

Casters with rear brake and With locking system, Welded Caster Fork
Blue-painted finish, Mounting Type - Top Plate, 90x60 Bolt Hole Spacing
Cast Iron Wheel Center, High Quality Polyurethane Wheel Tread, Cast Iron red Bearings—Ball Bearings

Wheel tread: Made of high quality polyurethane
Wheel center: iron core/cast iron

Drawings are for reference only and may differ from the product



Picture may differ from original product

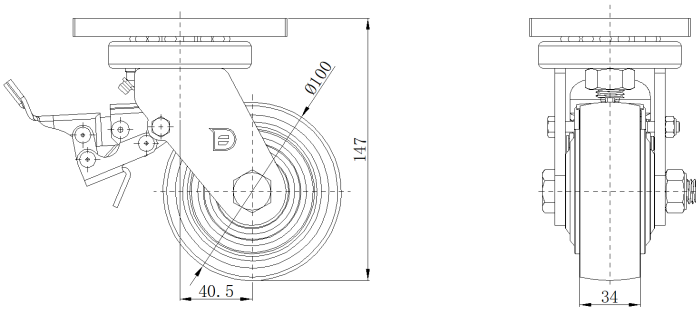
Technical Data

| | |
|--|-------------------------------|
| <input checked="" type="radio"/> Metric <input type="radio"/> Imperial | |
| Wheel Diameter | 100mm |
| Wheel Width | 34mm |
| Wheel Bearing | Wheels With Ball Bearings |
| Plate Size | 120 x 90mm |
| Bolt Hole Spacing | 90 x 60mm |
| Plate Hole | 12mm |
| Offset | 40.5mm |
| Swivel Interference | 202mm |
| Overall Height | 147mm |
| Swivel Radius | 101mm |
| Hardness Of Tread | 93±5° Shore A |
| Load Capacity (Dynamic) | 250kgs |
| Load Capacity (Static) | 375kgs |
| Temperature | -20°C to +70°C |
| Fork Type | Swivel Caster With Rear Brake |
| Stainless | N/A |
| Electrical Conductivity | N/A |
| Anti-Static | N/A |
| Weight | 3.01kgs |
| Standard | ISO22883 |

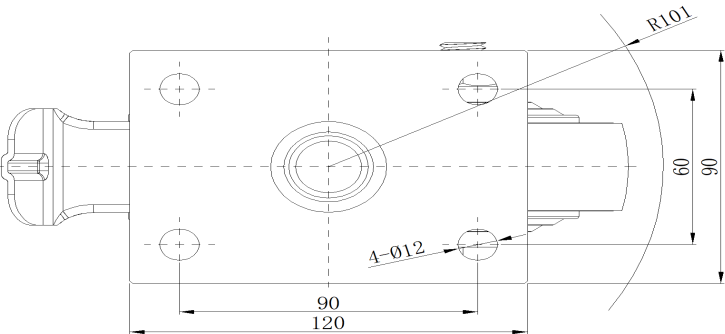
Advantages at a glance

| | |
|----------------------------|-----------|
| Rolling Resistance | ● ● ● ○ ○ |
| Operating Noise | ● ● ● ● ○ |
| Floor Surface Preservation | ● ● ● ● ○ |

Dimensions



Mounting



* For any deviation between metric and imperial spec, please refer to the metric spec.