

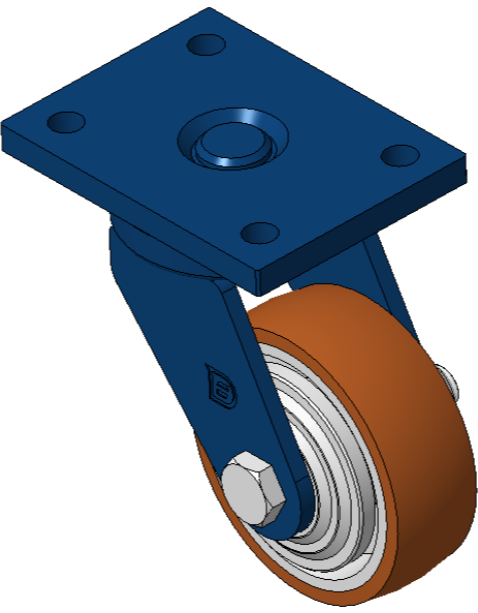


1102 B Type Caster Series

QPU (brown round) Wheel Diameter × Wheel Width 100 x 34mm

EAN

KS-11020400532111



Swivel Caster, Welded Caster Fork - 90x60 Bolt Hole Spacing
Blue painted finish, Mounting Type - Top Plate
Cast Iron core, High Quality Polyurethane Wheel Tread
Cast Iron brown, Bearing - Ball Bearings

Wheel Tread: Hhigh-Quality Polyurethane
Wheel Center: iron core/cast iron core

Drawings are for reference only and may differ from the product

Picture may differ from original product

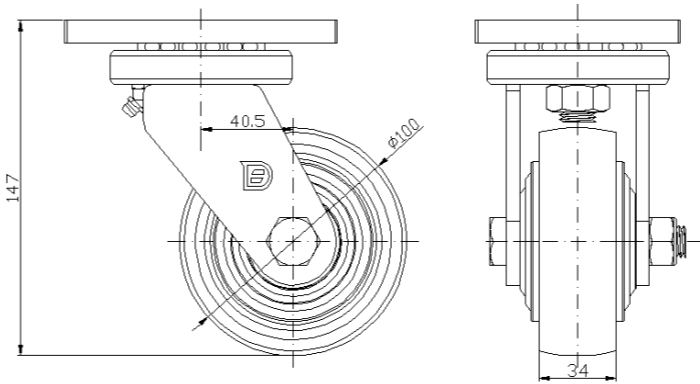
Technical Data

| | |
|--|---------------------------|
| <input checked="" type="radio"/> Metric <input type="radio"/> Imperial | |
| Wheel Diameter | 100mm |
| Wheel Width | 34mm |
| Wheel Bearing | Wheels With Ball Bearings |
| Plate Size | 120 x 90mm |
| Bolt Hole Spacing | 90 x 60mm |
| Plate Hole | 12mm |
| Offset | 40.5mm |
| Swivel Interference | 186mm |
| Overall Height | 147mm |
| Swivel Radius | 93mm |
| Hardness Of Tread | 92±5° Shore A |
| Load Capacity (Dynamic) | 335kgs |
| Load Capacity (Static) | 502kgs |
| Temperature | -20°C to +70°C |
| Fork Type | Swivel Caster |
| Stainless | N/A |
| Electrical Conductivity | N/A |
| Anti-Static | N/A |
| Weight | 2.60kgs |
| Standard | ISO22883 |

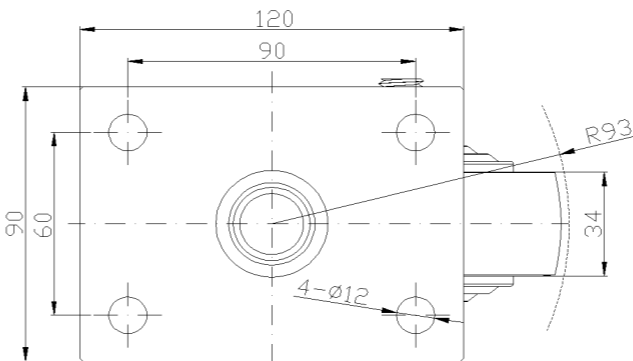
Advantages at a glance

| | |
|----------------------------|-----------|
| Rolling Resistance | ● ● ● ● ● |
| Operating Noise | ● ● ● ● ● |
| Floor Surface Preservation | ● ● ● ● ● |

Dimensions



Mounting



* For any deviation between metric and imperial spec, please refer to the metric spec.