



1102 B Type Caster Series

QPU (brown flat) Wheel Diameter × Wheel Width 100 x 34mm

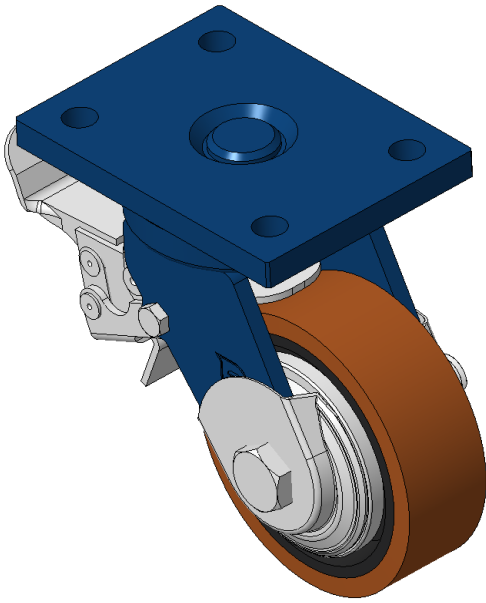
EAN

KS-11020400534061

Casters with rear brake and With locking system, Welded Caster Fork
Blue-painted finish, Mounting Type - Top Plate, 90x60 Bolt Hole Spacing
Cast Iron Wheel Center, High Quality Polyurethane Wheel Tread, Cast Iron brown Bearings—Ball Bearings with special Anti-thread wheel cover

Wheel tread: Made of high quality polyurethane
Wheel center: iron core/cast iron

Drawings are for reference only and may differ from the product



Picture may differ from original product

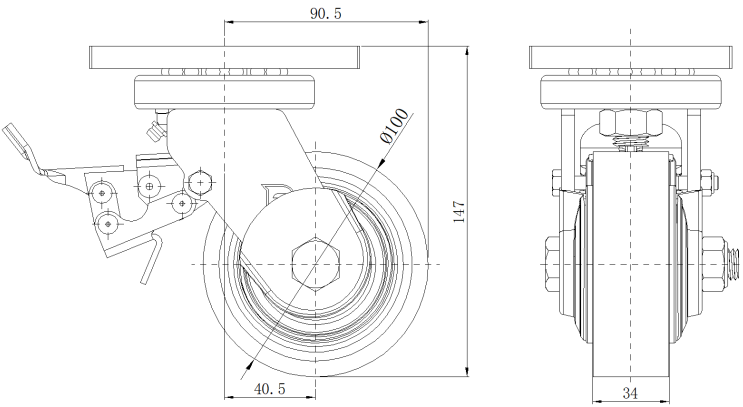
Technical Data

<input checked="" type="radio"/> Metric <input type="radio"/> Imperial	
Wheel Diameter	100mm
Wheel Width	34mm
Wheel Bearing	Wheels With Ball Bearings
Plate Size	120 x 90mm
Bolt Hole Spacing	90 x 60mm
Plate Hole	12mm
Offset	40.5mm
Swivel Interference	202mm
Overall Height	147mm
Swivel Radius	101mm
Hardness Of Tread	92±5° Shore A
Load Capacity (Dynamic)	385kgs
Load Capacity (Static)	577kgs
Temperature	-20°C to +70°C
Fork Type	Swivel Caster With Rear Brake
Stainless	N/A
Electrical Conductivity	N/A
Anti-Static	N/A
Weight	3.20kgs
Standard	ISO22883

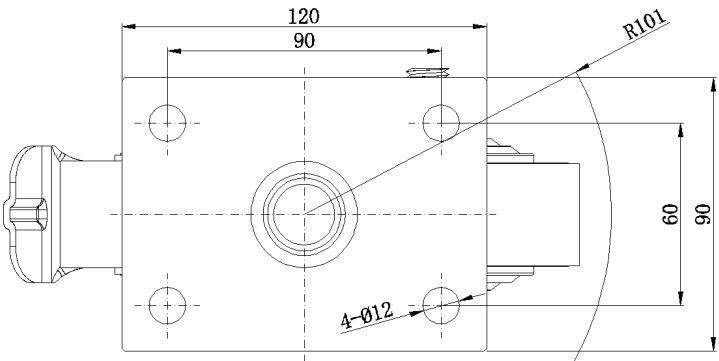
Advantages at a glance

Rolling Resistance	● ● ● ● ●
Operating Noise	● ● ● ● ●
Floor Surface Preservation	● ● ● ● ●

Dimensions



Mounting



* For any deviation between metric and imperial spec, please refer to the metric spec.