



1102 B Type Caster Series

NBR (milling black) Wheel Diameter x Wheel Width 125 x 40mm

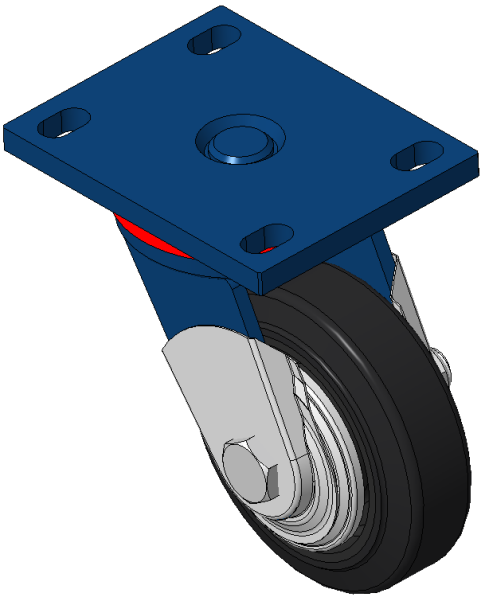
EAN

KS-11020500042021

Swivel Caster, Welded Caster Fork - 110x75 Bolt Hole Spacing
Blue painted finish, Mounting Type - Top Plate
Cast Iron core, High-Quality, highly Resilient Rubber Wheel Tread, Cast Iron black
Bearing - Ball Bearing, with special anti-wrap wheel cap

Wheel surface: Made of high-quality and highly elastic rubber
Wheel Center: iron core/cast iron core

Drawings are for reference only and may differ from the product



Picture may differ from original product

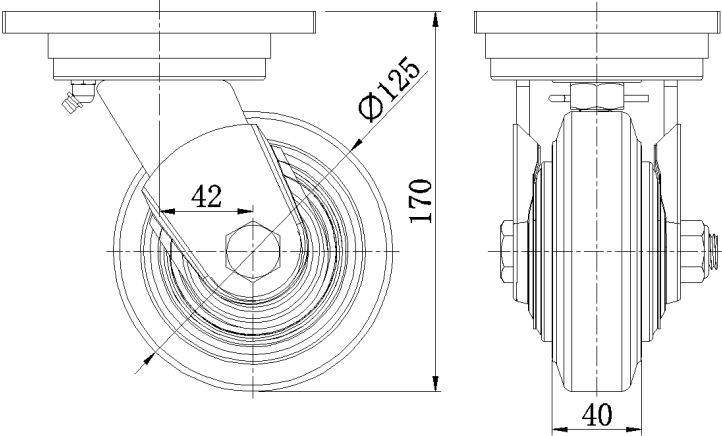
Technical Data

<input checked="" type="radio"/> Metric <input type="radio"/> Imperial	
Wheel Diameter	125mm
Wheel Width	40mm
Wheel Bearing	Wheels With Ball Bearings
Plate Size	140 x 110mm
Bolt Hole Spacing	110x75mm
Plate Hole	22 x 13mm
Offset	42mm
Swivel Interference	216mm
Overall Height	170mm
Swivel Radius	108mm
Hardness Of Tread	85±5° Shore A
Load Capacity (Dynamic)	250kgs
Load Capacity (Static)	375kgs
Temperature	-20°C to +80°C
Fork Type	Swivel Caster
Stainless	N/A
Electrical Conductivity	N/A
Anti-Static	N/A
Weight	4.02kgs
Standard	ISO22883

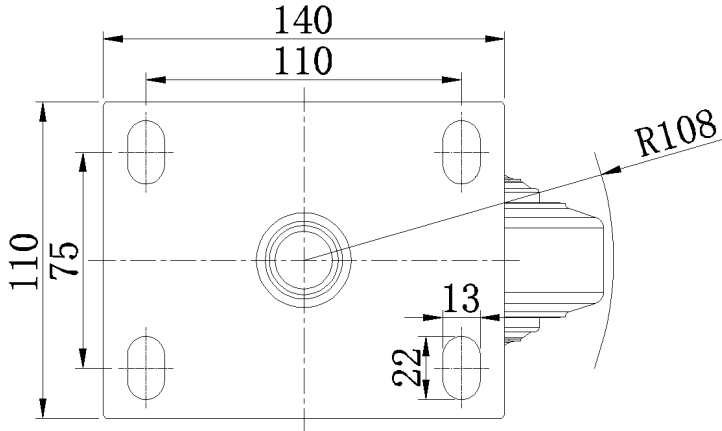
Advantages at a glance

Rolling Resistance	● ● ● ○ ○
Operating Noise	● ● ● ● ○
Floor Surface Preservation	● ● ● ● ○

Dimensions



Mounting



* For any deviation between metric and imperial spec, please refer to the metric spec.