



1102 B Type Caster Series

Non-marking NBR Rubber (milling) Wheel Diameter x Wheel Width 125 x 40mm

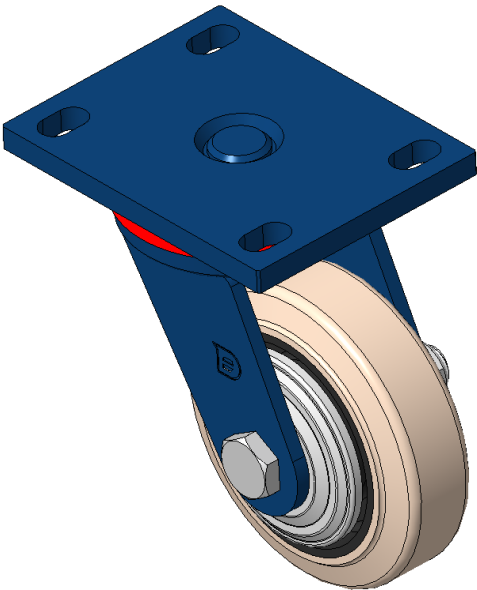
EAN

KS-11020500042081

Swivel Caster, Welded Caster Fork - 110x75 Bolt Hole Spacing  
Blue painted finish, Mounting Type - Top Plate  
Cast Iron core, High-Quality, highly Resilient Rubber Wheel Tread  
Cast Iron finish, Ball Bearings

Wheel surface: Made of high-quality, highly elastic rubber  
Wheel Center: iron core/cast iron core

Drawings are for reference only and may differ from the product



Picture may differ from original product

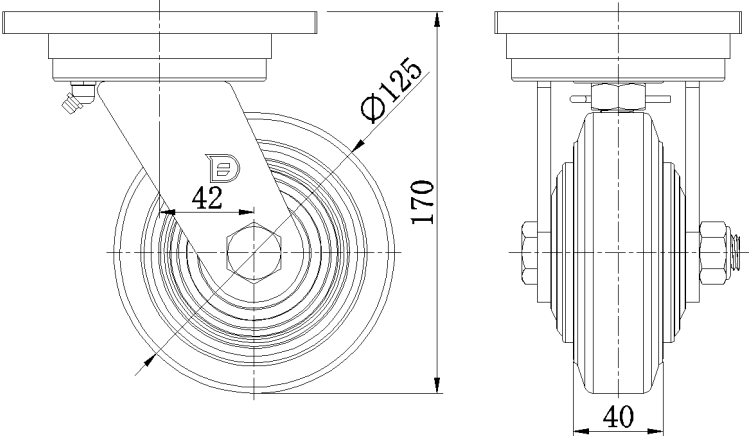
Technical Data

<input checked="" type="radio"/> Imperial <input type="radio"/> Metric	
Wheel Diameter	5 "
Wheel Width	1-5/8 "
Wheel Bearing	Wheels With Ball Bearings
Plate Size	5-9/16 " x 4-3/8 "
Bolt Hole Spacing	4-5/16 " x3"
Plate Hole	7/8 " x 9/16 "
Offset	1-11/16 "
Swivel Interference	8-9/16 "
Overall Height	6-13/16 "
Swivel Radius	4-5/16 "
Hardness Of Tread	85±5° Shore A
Load Capacity (Dynamic)	551lbs
Load Capacity (Static)	827lbs
Temperature	-4°F to +176°F
Fork Type	Swivel Caster
Stainless	N/A
Electrical Conductivity	N/A
Anti-Static	N/A
Weight	8.7lbs
Standard	ISO22883

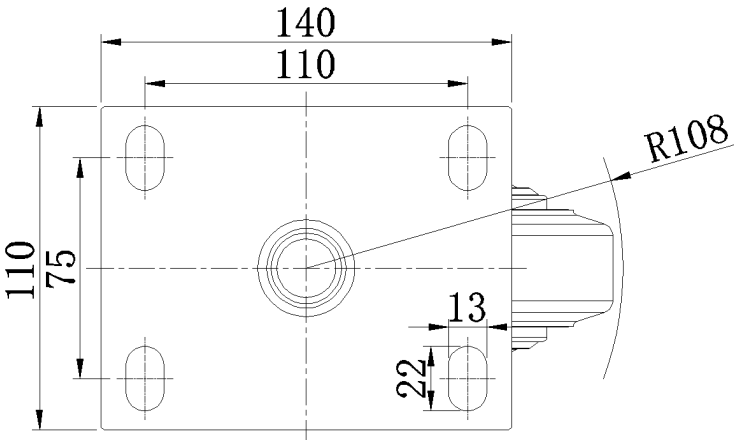
Advantages at a glance

Rolling Resistance	● ● ● ○ ○
Operating Noise	● ● ● ● ○
Floor Surface Preservation	● ● ● ● ○

Dimensions



Mounting



\* For any deviation between metric and imperial spec, please refer to the metric spec.