



1102 B Type Caster Series

CPD Wheel Diameter x Wheel Width 125 x 40mm

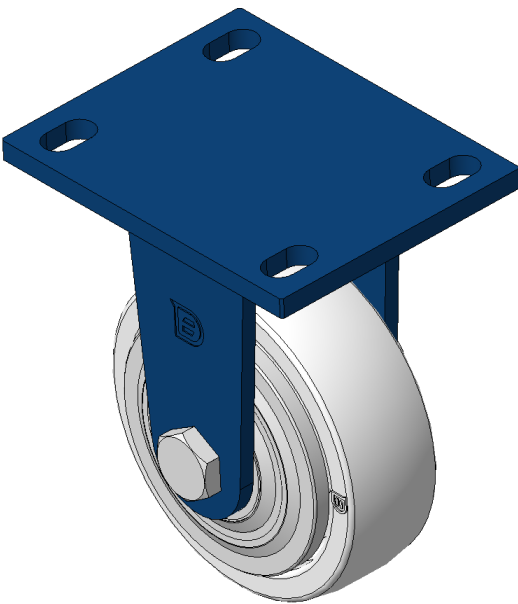
EAN

KS-11020500291011

Rigid Caster, Welded Caster Fork
Blue-painted finish, Mounting Type - Top Plate, 110x75mm Bolt Hole Spacing
Polypropylene Wheel Center and Wheel Tread, natural color
Bearings—Ball Bearings

Wheel surface: PP polypropylene
Wheel Center: PP polypropylene

Drawings are for reference only and may differ from the product



Picture may differ from original product

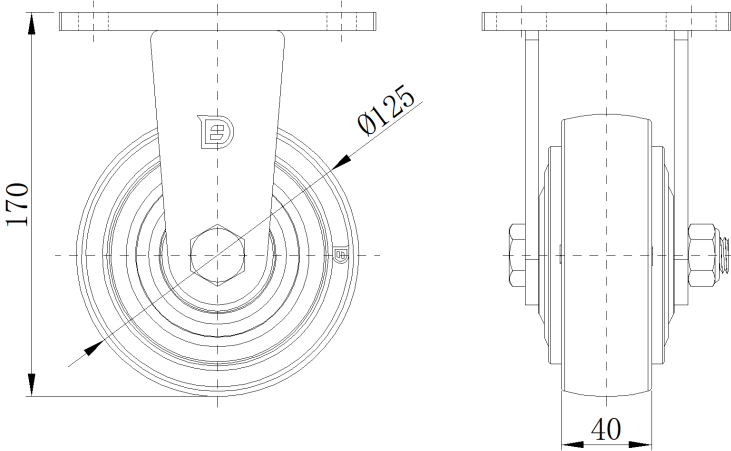
Technical Data

| | |
|--|---------------------------|
| <input checked="" type="radio"/> Imperial <input type="radio"/> Metric | |
| Wheel Diameter | 5 " |
| Wheel Width | 1-5/8 " |
| Wheel Bearing | Wheels With Ball Bearings |
| Plate Size | 5-9/16 " x 4-3/8 " |
| Bolt Hole Spacing | 4-5/16 " x3" |
| Plate Hole | 7/8 " x 9/16 " |
| Overall Height | 6-13/16 " |
| Hardness Of Tread | 65±5° Shore D |
| Load Capacity (Dynamic) | 551lbs |
| Load Capacity (Static) | 827lbs |
| Temperature | 14°F to +140°F |
| Fork Type | Rigid Caster |
| Stainless | N/A |
| Electrical Conductivity | N/A |
| Anti-Static | N/A |
| Weight | 42.5lbs |
| Standard | ISO22883 |

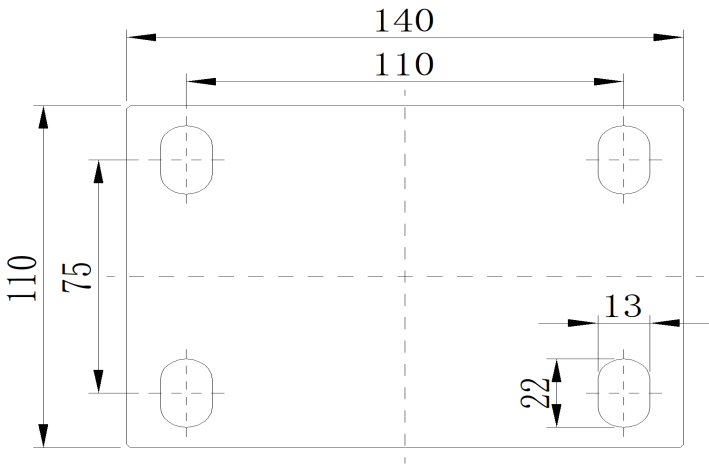
Advantages at a glance

| | |
|----------------------------|-----------|
| Rolling Resistance | ● ● ● ● ● |
| Operating Noise | ● ● ● ○ ○ |
| Floor Surface Preservation | ● ● ● ○ ○ |

Dimensions



Mounting



* For any deviation between metric and imperial spec, please refer to the metric spec.