

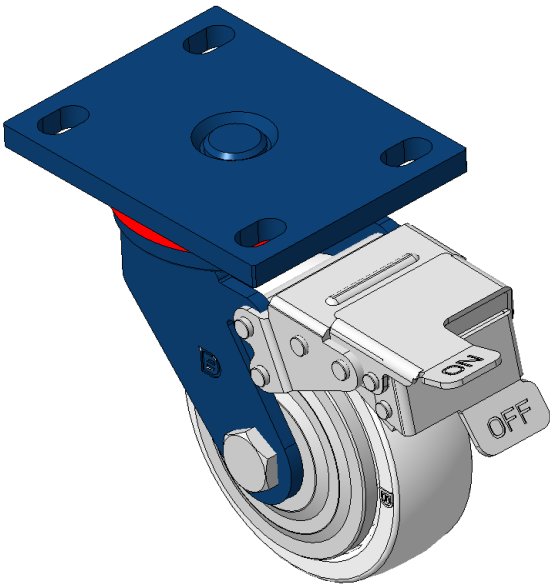


1102 B Type Caster Series

CPD Wheel Diameter x Wheel Width 125 x 40mm

EAN

KS-11020500294061



Picture may differ from original product

Casters with Front Brake locking system, Welded Caster Fork Blue painted finish, Mounting Type - Top Plate, 110x75 Bolt Hole Spacing Polypropylene Wheel Center and tread Natural color, Bearing—Ball Bearing

Wheel Tread: PP polypropylene
Wheel Center: PP polypropylene

Drawings are for reference only and may differ from the product

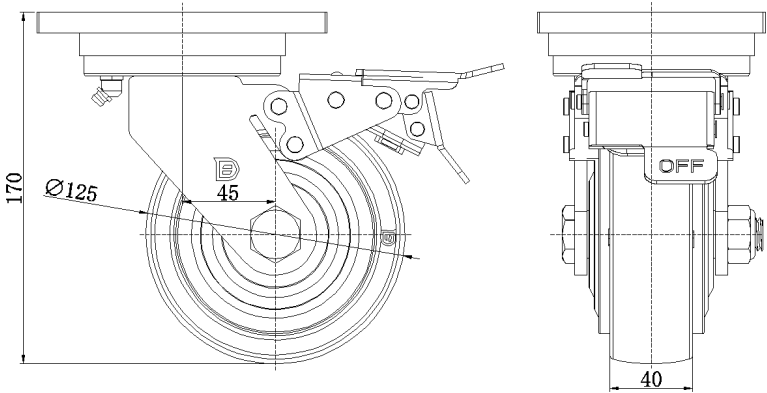
Technical Data

<input checked="" type="radio"/> Metric <input type="radio"/> Imperial	
Wheel Diameter	125mm
Wheel Width	40mm
Wheel Bearing	Wheels With Ball Bearings
Plate Size	140 x 110mm
Bolt Hole Spacing	110x75mm
Plate Hole	22 x 13mm
Offset	45mm
Swivel Interference	320mm
Overall Height	170mm
Swivel Radius	160mm
Hardness Of Tread	72±5° Shore D
Load Capacity (Dynamic)	250kgs
Load Capacity (Static)	375kgs
Temperature	-12°C to +60°C
Fork Type	Swivel Caster With Front Brake
Stainless	N/A
Electrical Conductivity	N/A
Anti-Static	N/A
Weight	3.53kgs
Standard	ISO22883

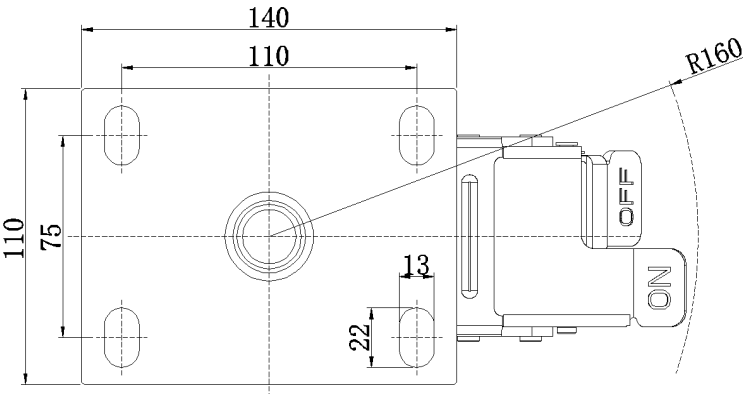
Advantages at a glance

Rolling Resistance	● ● ● ● ●
Operating Noise	● ● ● ○ ○
Floor Surface Preservation	● ● ● ○ ○

Dimensions



Mounting



* For any deviation between metric and imperial spec, please refer to the metric spec.