



1102 B Type Caster Series

PU (red round) Wheel Diameter x Wheel Width 125 x 40mm

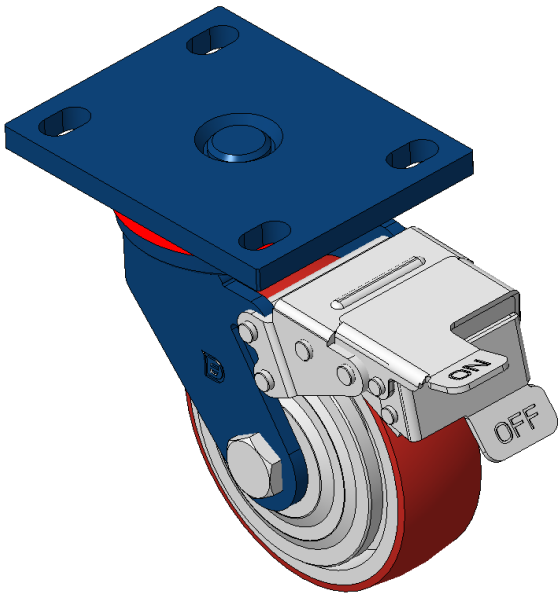
EAN

KS-11020500334171

Casters with Front Brake locking system, Welded Caster Fork - Hole spacing 110x75 Blue-painted finish, Mounting Type - Top Plate Cast Iron Wheel Center, High Quality Polyurethane tread Red Cast Iron finish, Bearing - Ball Bearing.

Wheel Tread: Made of high-quality polyurethane
Wheel center: iron core/cast iron

Drawings are for reference only and may differ from the product



Picture may differ from original product

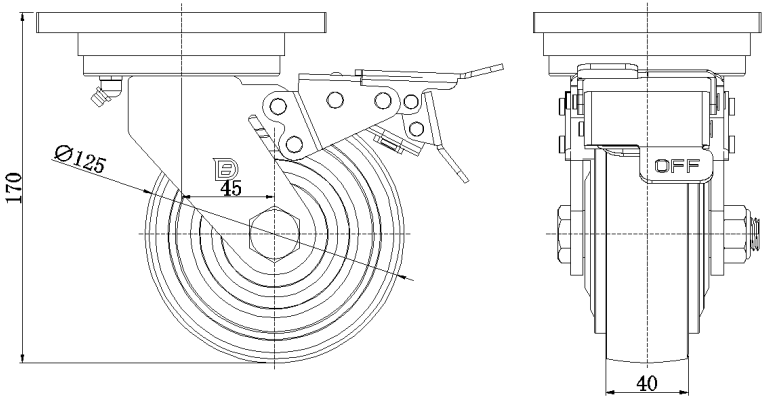
Technical Data

<input checked="" type="radio"/> Metric <input type="radio"/> Imperial	
Wheel Diameter	125mm
Wheel Width	40mm
Wheel Bearing	Wheels With Ball Bearings
Plate Size	140 x 110mm
Bolt Hole Spacing	110x75mm
Plate Hole	22 x 13mm
Offset	45mm
Swivel Interference	320mm
Overall Height	170mm
Swivel Radius	160mm
Hardness Of Tread	93±5° Shore A
Load Capacity (Dynamic)	340kgs
Load Capacity (Static)	510kgs
Temperature	-20°C to +70°C
Fork Type	Swivel Caster With Front Brake
Stainless	N/A
Electrical Conductivity	N/A
Anti-Static	N/A
Weight	4.34kgs
Standard	ISO22883

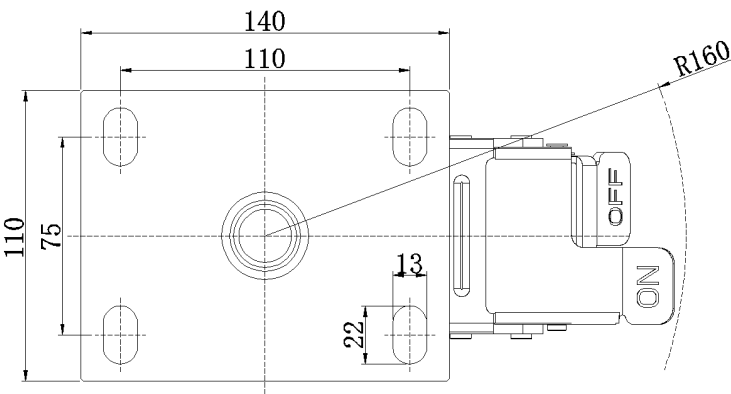
Advantages at a glance

Rolling Resistance	● ● ● ○ ○
Operating Noise	● ● ● ● ○
Floor Surface Preservation	● ● ● ● ○

Dimensions



Mounting



* For any deviation between metric and imperial spec, please refer to the metric spec.