

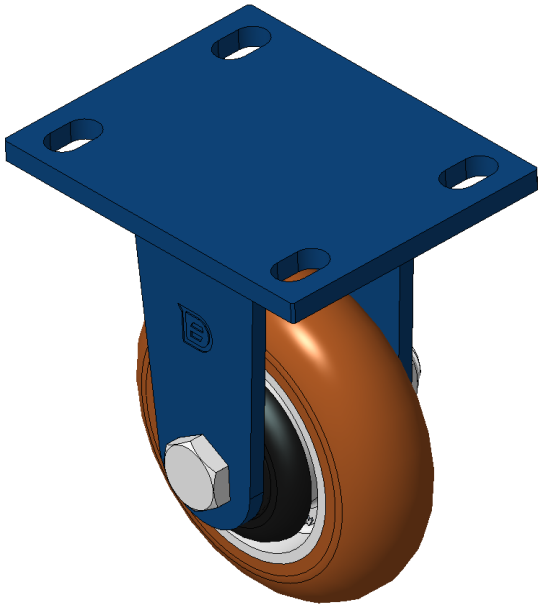


1102 B Type Caster Series

EQPU (brown round) Wheel Diameter x Wheel Width 125 x 40mm

EAN

KS-11020500551051



Picture may differ from original product

Swivel Caster, Welded Caster Fork - 110x75 Bolt Hole Spacing Blue painted finish, Mounting Type - Top Plate Cast Iron Wheel Center, High Quality Polyurethane tread Iron brown, Bearing - Ball Bearing

Wheel Tread: Made of high-quality polyurethane
Wheel Center: iron core/cast iron core

Drawings are for reference only and may differ from the product

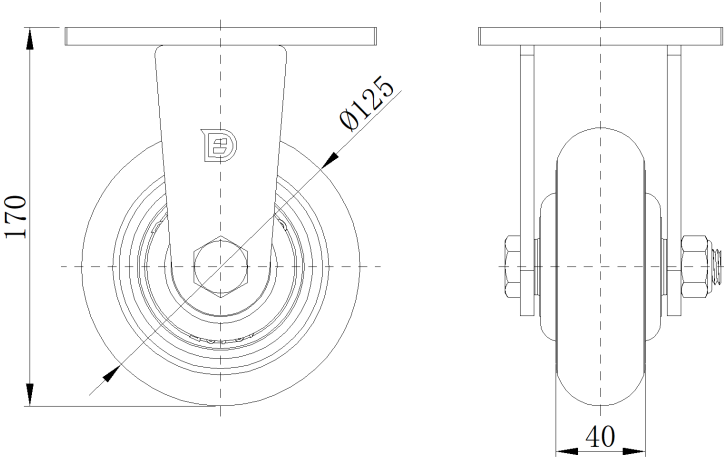
Technical Data

| | |
|--|---------------------------|
| <input checked="" type="radio"/> Metric <input type="radio"/> Imperial | |
| Wheel Diameter | 125mm |
| Wheel Width | 40mm |
| Wheel Bearing | Wheels With Ball Bearings |
| Plate Size | 140 x 110mm |
| Bolt Hole Spacing | 110x75mm |
| Plate Hole | 22 x 13mm |
| Overall Height | 170mm |
| Hardness Of Tread | 92±5° Shore A |
| Load Capacity (Dynamic) | 450kgs |
| Load Capacity (Static) | 675kgs |
| Temperature | -20°C to +70°C |
| Fork Type | Rigid Caster |
| Stainless | N/A |
| Electrical Conductivity | N/A |
| Anti-Static | N/A |
| Weight | 3.6kgs |
| Standard | ISO22883 |

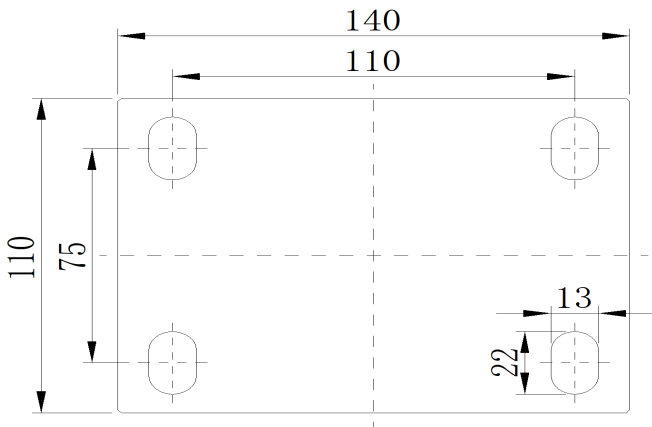
Advantages at a glance

| | |
|----------------------------|-----------|
| Rolling Resistance | • • • • • |
| Operating Noise | • • • • • |
| Floor Surface Preservation | • • • • • |

Dimensions



Mounting



* For any deviation between metric and imperial spec, please refer to the metric spec.