



1102 B Type Caster Series

QPU (brown flat) Wheel Diameter x Wheel Width 150 x 42mm

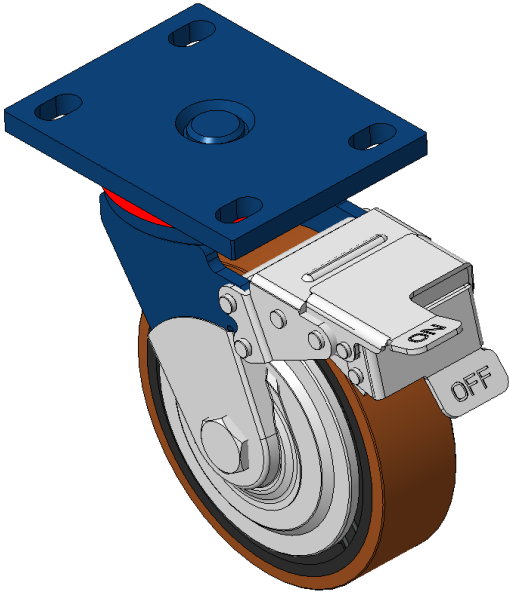
EAN

KS-11020600534061

Front Brake Locking system, Welded Caster Fork Blue-painted finish, Mounting Type - Top Plate, 110x75 Bolt Hole Spacing Cast Iron Wheel Center, High Quality Polyurethane tread, Cast Iron brown Bearing—Ball Bearing with special Anti-thread wheel cover

Wheel tread: Made of high-quality polyurethane  
Wheel Center: iron core/cast iron core

Drawings are for reference only and may differ from the product



Picture may differ from original product

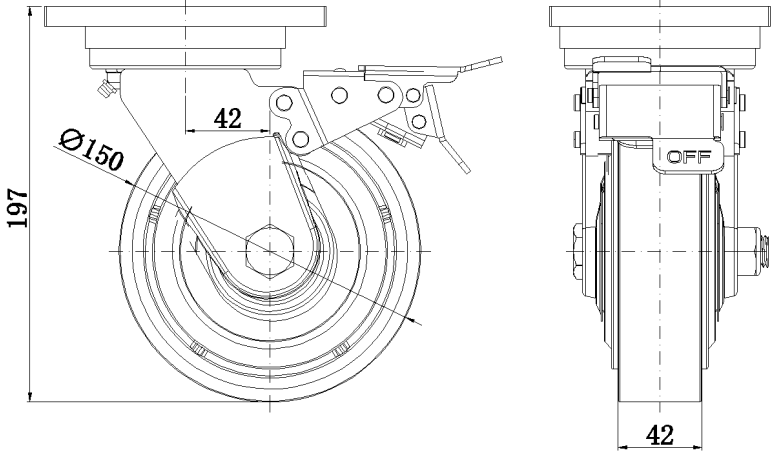
Technical Data

|  |                                |
|--|--------------------------------|
| <input checked="" type="radio"/> Metric <input type="radio"/> Imperial |                                |
| Wheel Diameter   | 150mm                          |
| Wheel Width  | 42mm                           |
| Wheel Bearing  | Wheels With Ball Bearings      |
| Plate Size   | 140 x 110mm                    |
| Bolt Hole Spacing  | 110x75mm                       |
| Plate Hole   | 22 x 13mm                      |
| Offset   | 42mm                           |
| Swivel Interference  | 324mm                          |
| Overall Height   | 197mm                          |
| Swivel Radius  | 162mm                          |
| Hardness Of Tread  | 92±5° Shore A                  |
| Load Capacity (Dynamic)  | 600kgs                         |
| Load Capacity (Static)   | 900kgs                         |
| Temperature  | -20°C to +70°C                 |
| Fork Type  | Swivel Caster With Front Brake |
| Stainless  | N/A                            |
| Electrical Conductivity  | N/A                            |
| Anti-Static  | N/A                            |
| Weight   | 5.03kgs                        |
| Standard   | ISO22883                       |

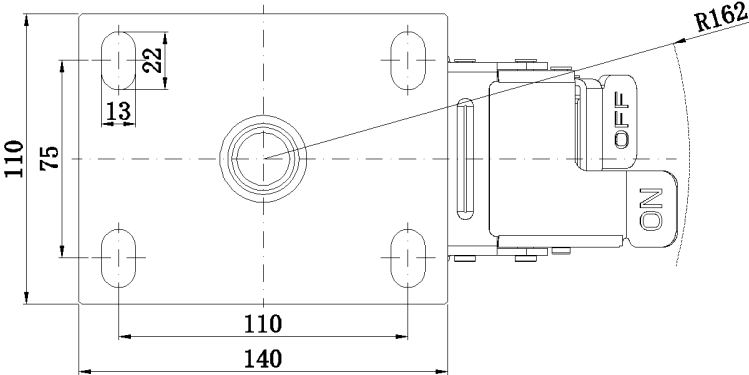
Advantages at a glance

|                            |           |
|----------------------------|-----------|
| Rolling Resistance         | ● ● ● ● ● |
| Operating Noise            | ● ● ● ● ● |
| Floor Surface Preservation | ● ● ● ● ● |

Dimensions



Mounting



\* For any deviation between metric and imperial spec, please refer to the metric spec.