



1102 B Type Caster Series

ZQPU (brown round) Wheel Diameter x Wheel Width 150 x 24 (51) mm

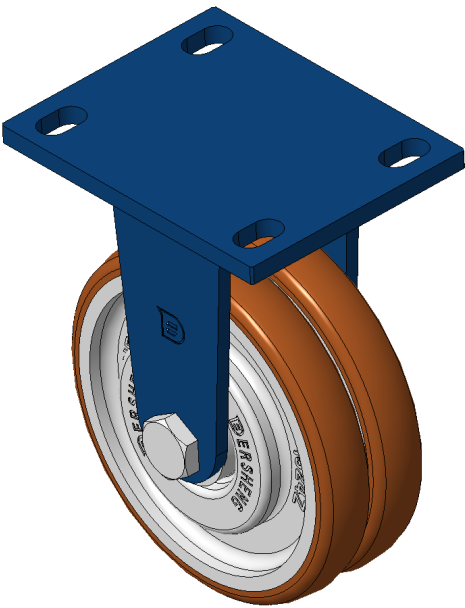
EAN

KS-11020600801021

Rigid Caster with Welded Caster Fork  
Blue-painted finish, Mounting Type - Top Plate, 110x75 Bolt Hole Spacing  
Cast Iron Wheel Center with High Quality Polyurethane Wheel Tread, Cast Iron brown Bearings—feature Ball Bearings for reduced Rolling Resistance  
ZQPU Dual wheel, Ergonomic design designally designed for easier starting and turning

Wheel tread: high quality polyurethane wheel tread  
Wheel Center: iron core/cast iron

Drawings are for reference only and may differ from the product



Picture may differ from original product

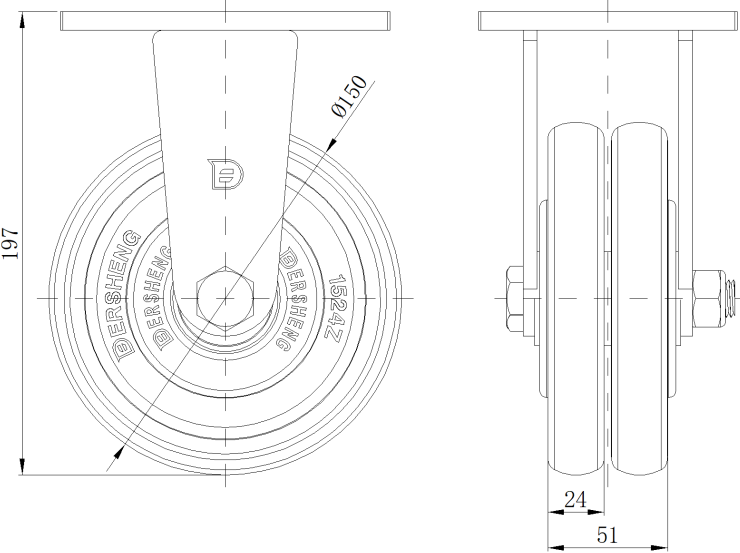
Technical Data

<input checked="" type="radio"/> Metric <input type="radio"/> Imperial	
Wheel Diameter	150mm
Wheel Width	51mm
Wheel Bearing	Wheels With Ball Bearings
Plate Size	140 x 110mm
Bolt Hole Spacing	110x75mm
Plate Hole	22 x 13mm
Overall Height	197mm
Hardness Of Tread	92±5° Shore A
Load Capacity (Dynamic)	550kgs
Load Capacity (Static)	825kgs
Temperature	-20°C to +70°C
Fork Type	Rigid Caster
Stainless	N/A
Electrical Conductivity	N/A
Anti-Static	N/A
Weight	4.47kgs
Standard	ISO22883

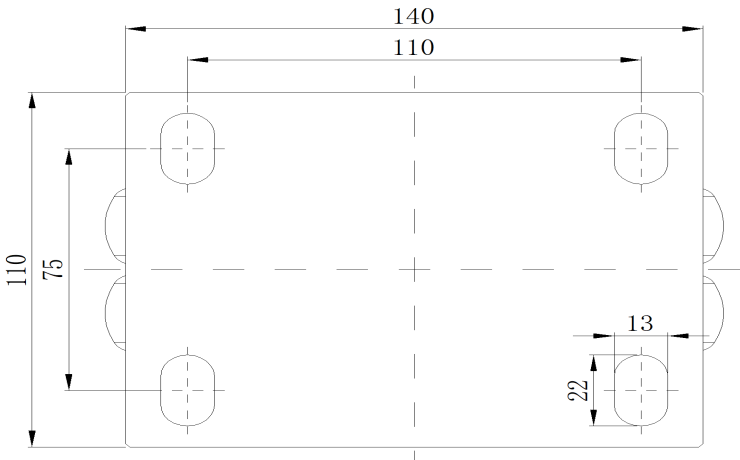
Advantages at a glance

Rolling Resistance	● ● ● ● ●
Operating Noise	● ● ● ● ●
Floor Surface Preservation	● ● ● ● ●

Dimensions



Mounting



\* For any deviation between metric and imperial spec, please refer to the metric spec.