



1102 B Type Caster Series

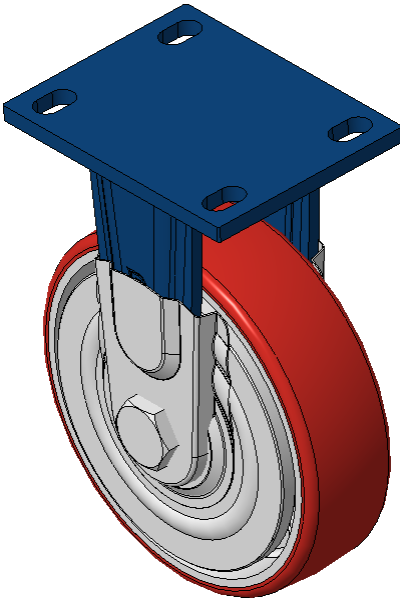
PU Wheel (Honghu) - Wheel Diameter × Wheel Width: 180×50mm

A  
KS-11020700331021

Rigid Casters, Welded Caster Fork Blue paint finish, plate Mounting Type, 110x75mm Bolt Hole Spacing Cast Iron wheel center, High-Quality, high-elasticity rubber Wheel Tread, Cast Iron red Ball Bearing bearings, equipped with special anti-winding wheel caps.

Wheel Tread: Hhigh-Quality Polyurethane  
Wheel hub: Iron wheel hub

Drawings are for reference only and may differ from the product



Picture may differ from original product

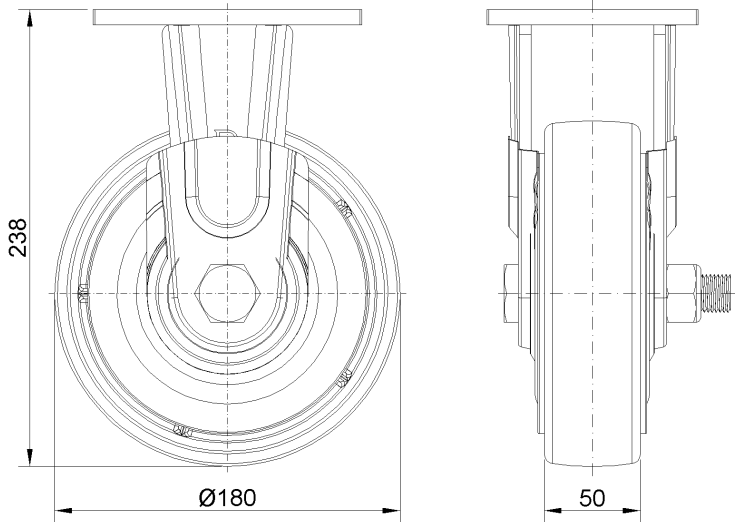
Technical Data

<input checked="" type="radio"/> Metric <input type="radio"/> Imperial	
Wheel Diameter	125mm
Wheel Width	40mm
Wheel Bearing	Wheels With Ball Bearings
Plate Size	140 x 110mm
Bolt Hole Spacing	110x75mm
Plate Hole	22 x 13mm
Overall Height	238mm
Hardness Of Tread	92±5° Shore A
Load Capacity (Dynamic)	450kgs
Load Capacity (Static)	675kgs
Temperature	-20°C to +70°C
Fork Type	Rigid Caster
Stainless	N/A
Electrical Conductivity	N/A
Anti-Static	N/A
Weight	4.86kgs
Standard	ISO22883

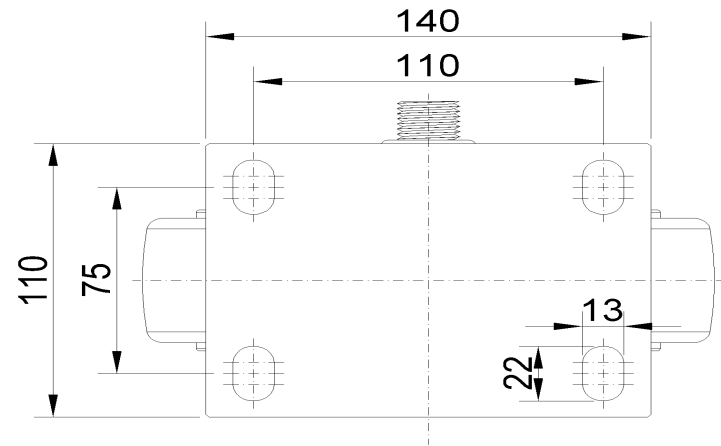
Advantages at a glance

Rolling Resistance	● ● ● ○ ○
Operating Noise	● ● ● ● ○
Floor Surface Preservation	● ● ● ● ○

Dimensions



Mounting



\* For any deviation between metric and imperial spec, please refer to the metric spec.