



1102 B Type Caster Series

QPU Wheel (Hehu) - Wheel Diameter × Wheel Width: 180×50mm

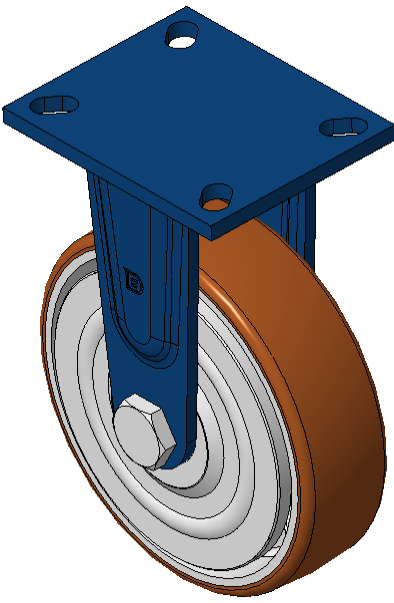
EAN

KS-11020700531361

Rigid Casters, Welded Caster Fork Blue paint finish, plate Mounting Type, 110x75mm Bolt Hole Spacing Cast Iron wheel center, High-Quality, high-elasticity rubber Wheel Tread, Cast Iron brown Ball Bearing bearings, with special Dust Cap

Wheel Tread: Hhigh-Quality Polyurethane
Wheel Center: Iron core / Cast iron core

Drawings are for reference only and may differ from the product



Picture may differ from original product

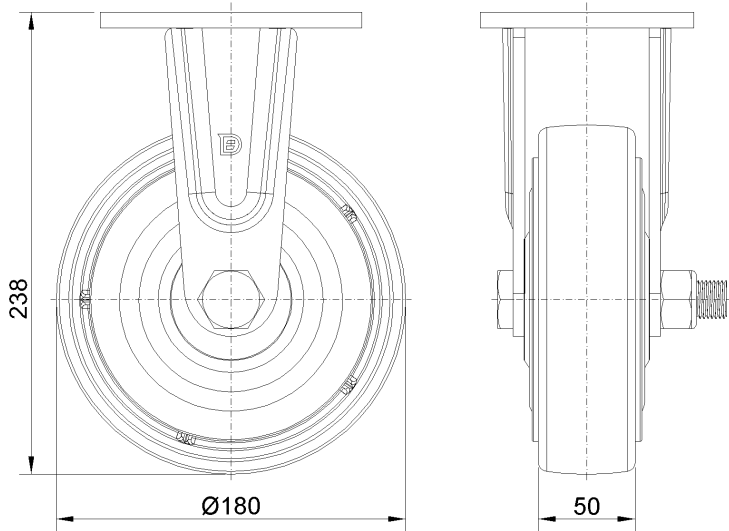
Technical Data

<input checked="" type="radio"/> Imperial <input type="radio"/> Metric	
Wheel Diameter	7-1/8 "
Wheel Width	2 "
Wheel Bearing	Wheels With Ball Bearings
Plate Size	5-9/16 " x 4-3/8 "
Bolt Hole Spacing	4-5/16 " x3"
Plate Hole	7/8 " x 9/16 "
Overall Height	9-1/2 "
Hardness Of Tread	93±5° Shore A
Load Capacity (Dynamic)	1323lbs
Load Capacity (Static)	1984lbs
Temperature	-4°F to +158°F
Fork Type	Rigid Caster
Stainless	N/A
Electrical Conductivity	N/A
Anti-Static	N/A
Weight	10.6lbs
Standard	ISO22883

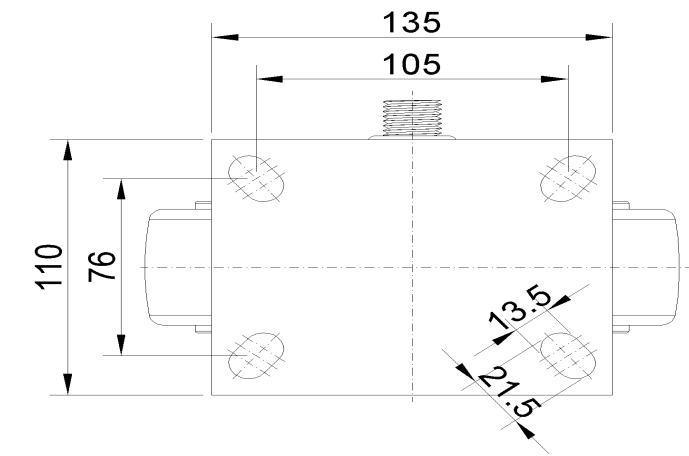
Advantages at a glance

Rolling Resistance	● ● ● ○ ○
Operating Noise	● ● ● ● ○
Floor Surface Preservation	● ● ● ● ○

Dimensions



Mounting



* For any deviation between metric and imperial spec, please refer to the metric spec.