



1102 B Type Caster Series

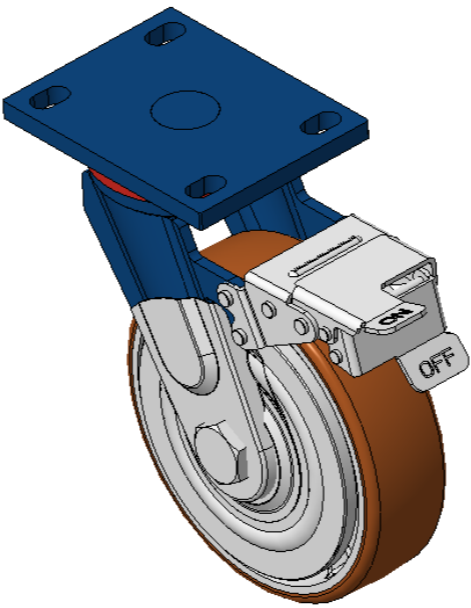
QPU Wheel (Hehu) - Wheel Diameter × Wheel Width: 180×50mm

EAN
KS-11020700534171A

Front-brake Casters, Welded Caster Fork
Blue paint finish, plate Mounting Type, 110x75mm Bolt Hole Spacing
Cast Iron wheel center, High-Quality, high-elasticity rubber Wheel Tread, Cast Iron brown
Bearings—Ball Bearings, equipped with a special anti-winding cover

Wheel Tread: Hhigh-Quality Polyurethane
Wheel Center: Iron core/Cast iron core

Drawings are for reference only and may differ from the product



Picture may differ from original product

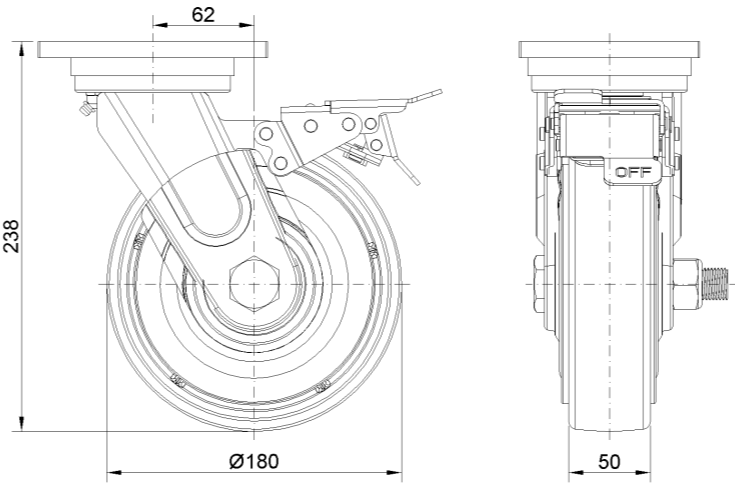
Technical Data

<input checked="" type="radio"/> Metric <input type="radio"/> Imperial	
Wheel Diameter	180mm
Wheel Width	50mm
Wheel Bearing	Wheels With Ball Bearings
Plate Size	140 x 110mm
Bolt Hole Spacing	110x75mm
Plate Hole	22 x 13mm
Offset	62mm
Swivel Interference	360mm
Overall Height	238mm
Swivel Radius	180mm
Hardness Of Tread	93±5° Shore A
Load Capacity (Dynamic)	600kgs
Load Capacity (Static)	900kgs
Temperature	-20°C to +70°C
Fork Type	Swivel Caster With Front Brake
Stainless	N/A
Electrical Conductivity	N/A
Anti-Static	N/A
Weight	6.50kgs
Standard	ISO22883

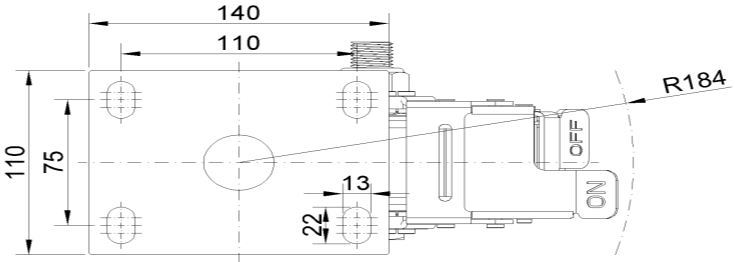
Advantages at a glance

Rolling Resistance	● ● ● ○ ○
Operating Noise	● ● ● ● ○
Floor Surface Preservation	● ● ● ● ○

Dimensions



Mounting



* For any deviation between metric and imperial spec, please refer to the metric spec.