



1102 B Type Caster Series

ZQPU (brown round) Wheel Diameter x Wheel Width 200 x 24 (51) mm

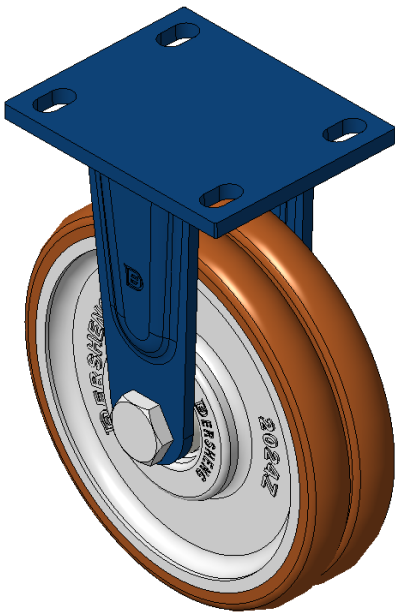
EAN

KS-11020800801021

Rigid Caster with Welded Caster Fork and blue paint finish. Mounting Type - Top Plate, 110x75 Bolt Hole Spacing. Cast Iron Wheel Center with High Quality Polyurethane tread, Cast Iron brown. Bearing—special Ball Bearing for reduced Rolling Resistance. ZQPU Dual Wheels, Ergonomic design for easier starting and turning.

Wheel tread: high-quality polyurethane wheel tread
Wheel Center: iron core/cast iron core

Drawings are for reference only and may differ from the product



Picture may differ from original product

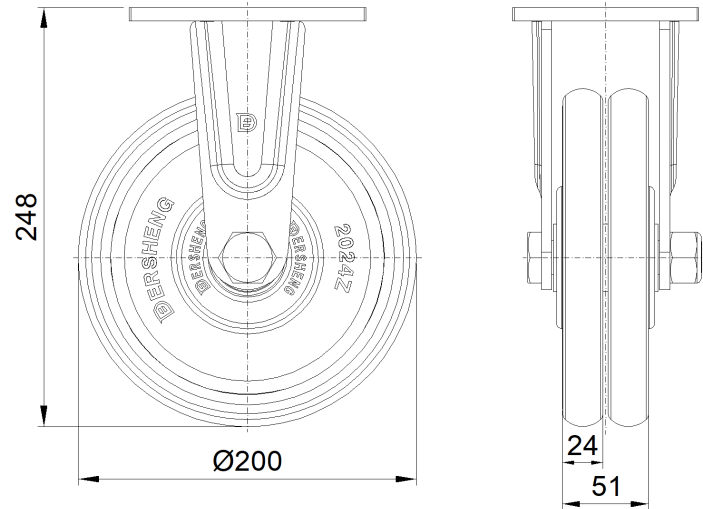
Technical Data

| | |
|--|---------------------------|
| <input checked="" type="radio"/> Metric <input type="radio"/> Imperial | |
| Wheel Diameter | 200mm |
| Wheel Width | 51mm |
| Wheel Bearing | Wheels With Ball Bearings |
| Plate Size | 140 x 110mm |
| Bolt Hole Spacing | 110x75mm |
| Plate Hole | 22 x 13mm |
| Overall Height | 248mm |
| Hardness Of Tread | 92±5° Shore A |
| Load Capacity (Dynamic) | 650kgs |
| Load Capacity (Static) | 975kgs |
| Temperature | -20°C to +70°C |
| Fork Type | Rigid Caster |
| Stainless | N/A |
| Electrical Conductivity | N/A |
| Anti-Static | N/A |
| Weight | 6.90kgs |
| Standard | ISO22883 |

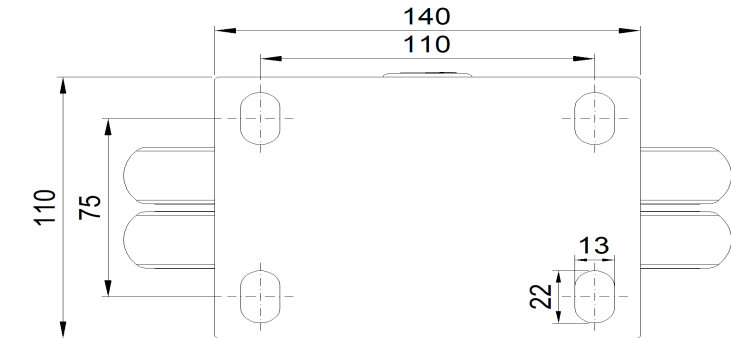
Advantages at a glance

| | |
|----------------------------|-----------|
| Rolling Resistance | ● ● ● ● ● |
| Operating Noise | ● ● ● ● ● |
| Floor Surface Preservation | ● ● ● ● ● |

Dimensions



Mounting



* For any deviation between metric and imperial spec, please refer to the metric spec.