



1102 B Type Caster Series

Non-marking NBR Rubber (milling) Wheel Diameter x Wheel Width 250 x 63mm

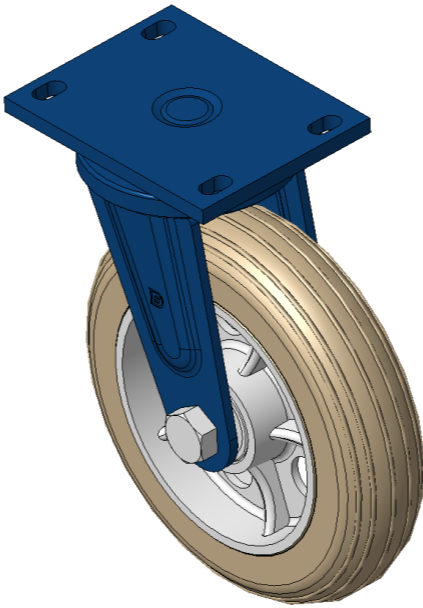
EAN

KS-11021000042071

Swivel Caster with Welded Caster Fork, blue paint finish. Mounting Type - Top Plate, 140x85 Bolt Hole Spacing. Cast Iron Wheel Center, High-Quality, highly Resilient Rubber tread, Cast Iron in Natural Color. Bearing—Ball Bearing.

Wheel Tread: Made of high-quality, highly elastic rubber
Wheel Center: iron core/cast iron core

Drawings are for reference only and may differ from the product



Picture may differ from original product

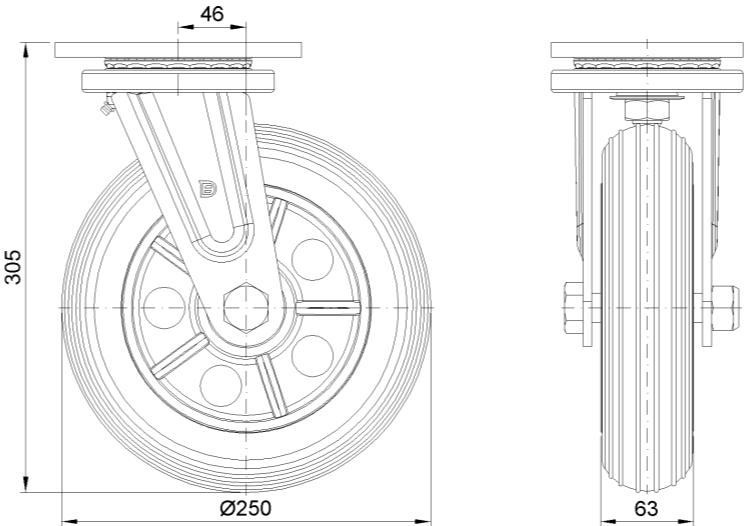
Technical Data

<input checked="" type="radio"/> Imperial <input type="radio"/> Metric	
Wheel Diameter	10 "
Wheel Width	2-1/2 "
Wheel Bearing	Wheels With Ball Bearings
Plate Size	6-5/8 " x 5-3/16 "
Bolt Hole Spacing	5-1/2 " x3-3/8 "
Plate Hole	7/8 " x 9/16 "
Offset	1-7/8 "
Swivel Interference	14 "
Overall Height	12-1/16 "
Swivel Radius	7 "
Hardness Of Tread	85±5° Shore A
Load Capacity (Dynamic)	882lbs
Load Capacity (Static)	1323lbs
Temperature	-4°F to +176°F
Fork Type	Swivel Caster
Stainless	N/A
Electrical Conductivity	N/A
Anti-Static	N/A
Weight	19.9lbs
Standard	ISO22883

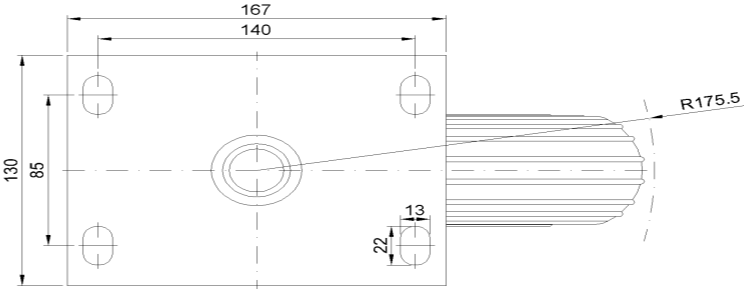
Advantages at a glance

Rolling Resistance	● ● ● ○ ○
Operating Noise	● ● ● ● ○
Floor Surface Preservation	● ● ● ● ○

Dimensions



Mounting



* For any deviation between metric and imperial spec, please refer to the metric spec.