

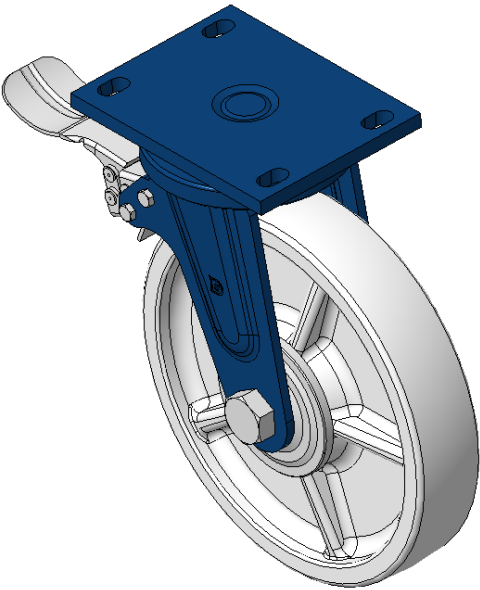


1102 B Type Caster Series

MRC (transparent) Wheel Diameter x Wheel Width 250 x 50mm

EAN

KS-11021000074031



Casters with rear brake and With locking system, Welded Caster Fork Blue-painted finish, Mounting Type - Top Plate, 140x85 Bolt Hole Spacing Reinforced Polypropylene Wheel Center, natural Wheel Tread Bearings—Ball Bearings

Wheel tread: Thermoplastic (PA6)
Wheel Center: Thermoplastic (PA6)

Drawings are for reference only and may differ from the product

Picture may differ from original product

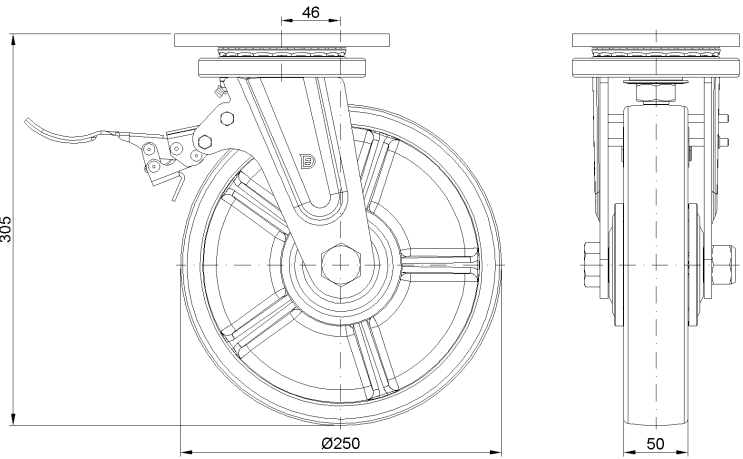
Technical Data

<input checked="" type="radio"/> Metric <input type="radio"/> Imperial	
Wheel Diameter	250mm
Wheel Width	50mm
Wheel Bearing	Wheels With Ball Bearings
Plate Size	167 x 130mm
Bolt Hole Spacing	140x85mm
Plate Hole	22 x 13mm
Offset	46mm
Swivel Interference	351mm
Overall Height	305mm
Swivel Radius	175.5mm
Hardness Of Tread	75±5° Shore D
Load Capacity (Dynamic)	800kgs
Load Capacity (Static)	1200kgs
Temperature	-20°C to +80°C
Fork Type	Swivel Caster With Rear Brake
Stainless	N/A
Electrical Conductivity	N/A
Anti-Static	N/A
Weight	7.48kgs
Standard	ISO22883

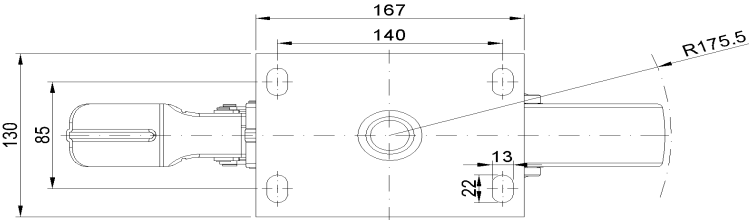
Advantages at a glance

Rolling Resistance	● ● ● ● ●
Operating Noise	● ● ○ ○ ○
Floor Surface Preservation	● ● ○ ○ ○

Dimensions



Mounting



* For any deviation between metric and imperial spec, please refer to the metric spec.