



1102 B Type Caster Series

VQPU (brown round) Wheel Diameter x Wheel Width 250 x 62mm

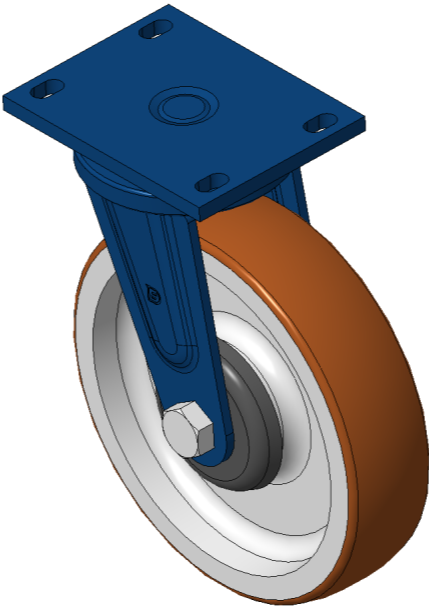
EAN

KS-11021000542031

Swivel Caster with Welded Caster Fork, blue painted finish. Mounting Type - Top Plate, 140x85 Bolt Hole Spacing. Cast Iron Wheel Center with High Quality Polyurethane tread, Cast Iron brown. Bearing—Ball Bearing.

Wheel tread: Made of high-quality polyurethane
Wheel Center: iron core/cast iron core

Drawings are for reference only and may differ from the product



Picture may differ from original product

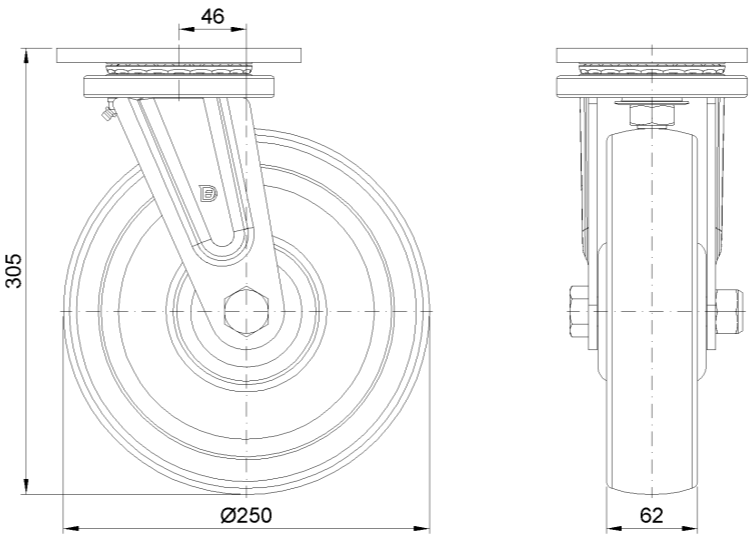
Technical Data

<input checked="" type="radio"/> Imperial <input type="radio"/> Metric	
Wheel Diameter	10-1/16 "
Wheel Width	2-1/2 "
Wheel Bearing	Wheels With Ball Bearings
Plate Size	6-5/8 " x 5-3/16 "
Bolt Hole Spacing	5-1/2 " x3-3/8 "
Plate Hole	7/8 " x 9/16 "
Offset	1-7/8 "
Swivel Interference	14 "
Overall Height	12-1/16 "
Swivel Radius	7 "
Hardness Of Tread	92±5° Shore A
Load Capacity (Dynamic)	2646lbs
Load Capacity (Static)	3968lbs
Temperature	-4°F to +158°F
Fork Type	Swivel Caster
Stainless	N/A
Electrical Conductivity	N/A
Anti-Static	N/A
Weight	28.0lbs
Standard	ISO22883

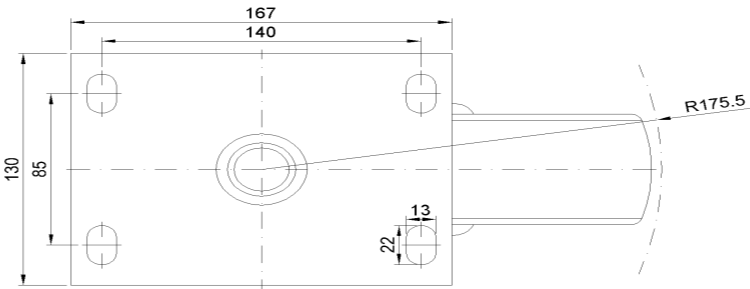
Advantages at a glance

Rolling Resistance	● ● ● ● ●
Operating Noise	● ● ● ● ●
Floor Surface Preservation	● ● ● ● ●

Dimensions



Mounting



* For any deviation between metric and imperial spec, please refer to the metric spec.