



1102 B Type Caster Series

QPU (brown flat) Wheel Diameter x Wheel Width 305x 70mm

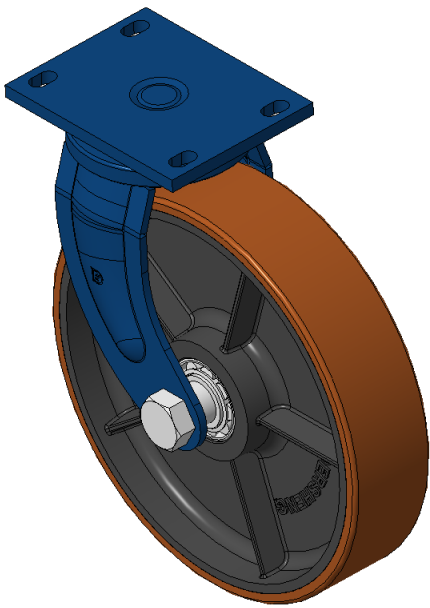
EAN

KS-11021200532011

Swivel Caster with Welded Caster Fork, blue painted finish Mounting Type - Top Plate, 140x85 Bolt Hole Spacing Cast Iron Wheel Center, High Quality Polyurethane tread, Cast Iron red Bearing - Ball Bearing

Wheel tread: Made of high-quality polyurethane
Wheel Center: iron core/cast iron core

Drawings are for reference only and may differ from the product



Picture may differ from original product

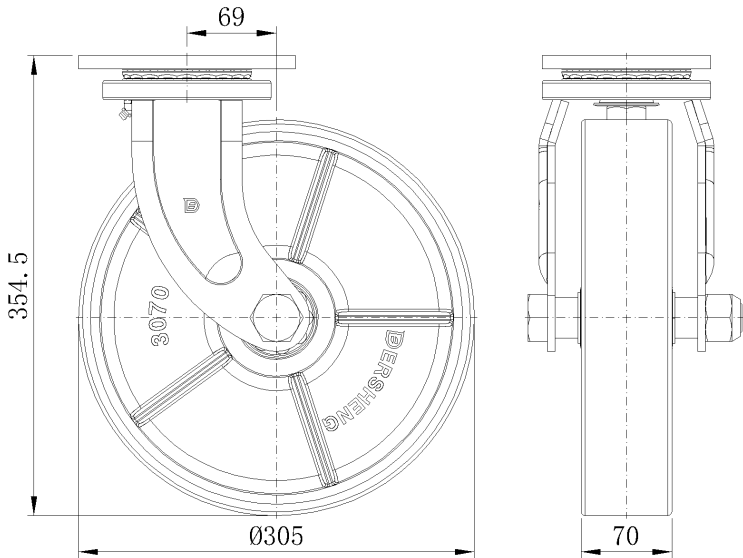
Technical Data

<input checked="" type="radio"/> Metric <input type="radio"/> Imperial	
Wheel Diameter	305mm
Wheel Width	70mm
Wheel Bearing	Wheels With Ball Bearings
Plate Size	167 x 130mm
Bolt Hole Spacing	140x85mm
Plate Hole	22 x 13mm
Offset	69mm
Swivel Interference	448mm
Overall Height	354.5mm
Swivel Radius	224mm
Hardness Of Tread	92±5° Shore A
Load Capacity (Dynamic)	1250kgs
Load Capacity (Static)	1875kgs
Temperature	-20°C to +70°C
Fork Type	Swivel Caster
Stainless	N/A
Electrical Conductivity	N/A
Anti-Static	N/A
Weight	15.50kgs
Standard	ISO22883

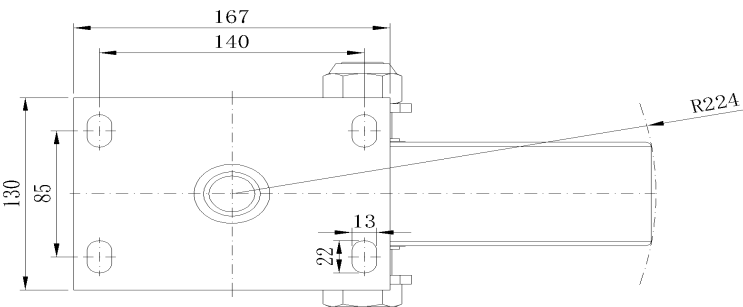
Advantages at a glance

Rolling Resistance	● ● ● ● ●
Operating Noise	● ● ● ● ●
Floor Surface Preservation	● ● ● ● ●

Dimensions



Mounting



* For any deviation between metric and imperial spec, please refer to the metric spec.