



1110-3 Series — Medi Series

TPR wheel (white dark gray) Wheel Diameter x Wheel Width 75 x 12mm

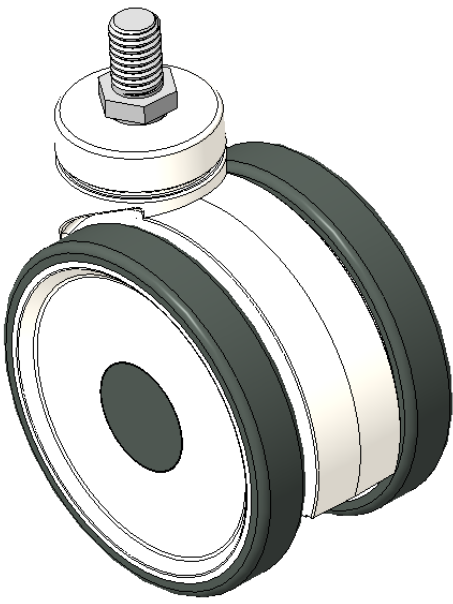
EAN

KS-11100302265053

Active double ball Casters, Threaded Stem M10x15  
White legs made of reinforced Polypropylene, Threaded Stem installation  
Rust-proof, Corrosion resistant, Attractive appearance, Economical, and rotates smoothly  
High-Quality Impact-Resistant Polypropylene Wheel Center, High-Quality Reinforced Polypropylene Rubber (TPR) Wheel Tread  
Dark gray, Plain Bearings

Wheel tread: Thermoplastic rubber elastomer (TPR)  
Wheel Center: Made of high-quality impact-resistant polypropylene

Drawings are for reference only and may differ from the product



Picture may differ from original product

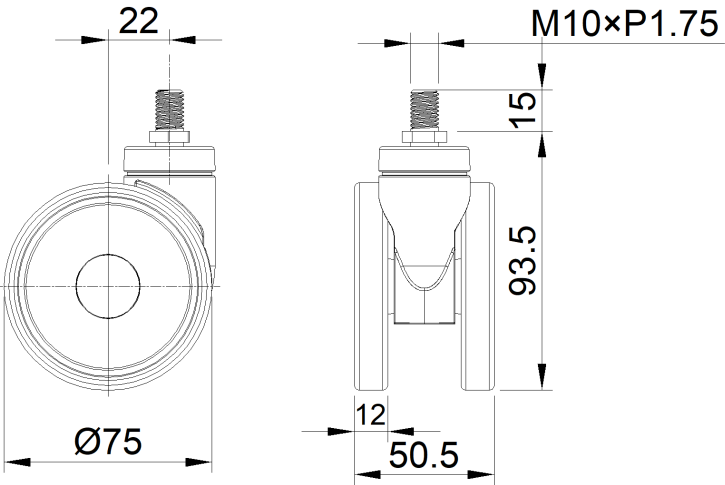
Technical Data

|  |                          |
|--|--------------------------|
| <input checked="" type="radio"/> Metric <input type="radio"/> Imperial |                          |
| Wheel Diameter   | 75mm                     |
| Wheel Width  | 50.5mm                   |
| Wheel Bearing  | Wheel With Plain Bearing |
| Threaded Stem  | M10                      |
| Threaded Size  | 15mm                     |
| Offset   | 22mm                     |
| Swivel Interference  | 132mm                    |
| Overall Height   | 119mm                    |
| Swivel Radius  | 66mm                     |
| Hardness Of Tread  | 82±5° Shore A            |
| Load Capacity (Dynamic)  | 30kgs                    |
| Load Capacity (Static)   | 45kgs                    |
| Temperature  | -20°C to +60°C           |
| Fork Type  | Swivel Caster            |
| Stainless  | N/A                      |
| Electrical Conductivity  | N/A                      |
| Anti-Static  | N/A                      |
| Weight   | 0.15kgs                  |
| Standard   | ISO22883                 |

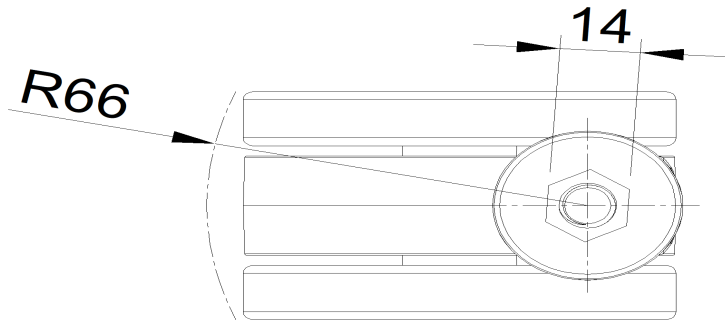
Advantages at a glance

|                            |           |
|----------------------------|-----------|
| Rolling Resistance         | ● ● ● ● ○ |
| Operating Noise            | ● ● ● ● ○ |
| Floor Surface Preservation | ● ● ● ● ● |

Dimensions



Mounting



\* For any deviation between metric and imperial spec, please refer to the metric spec.