



1110-3 Series — Medi Series

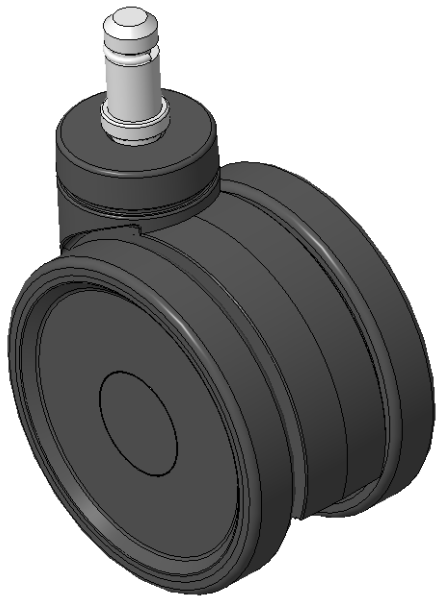
PPR Wheel Hub (Matte Black) Wheel Diameter×Wheel Width 75×12mm

EAN  
KS-11100302267033

Active double ball Casters, Ø11x22L insert rod, C-ring  
White legs made of reinforced Polypropylene, insert rod Mounting Type  
Rust-proof, Corrosion resistant, Attractive appearance, Economical, and rotates smoothly  
High-Quality Impact-Resistant Polypropylene Wheel Center, High-Quality Reinforced Polypropylene Rubber (TPR) Wheel Tread  
Black, Plain Bearings

Wheel tread: Thermoplastic rubber elastomer (TPR)  
Wheel Center: Made of high-quality impact-resistant polypropylene

Drawings are for reference only and may differ from the product



Picture may differ from original product

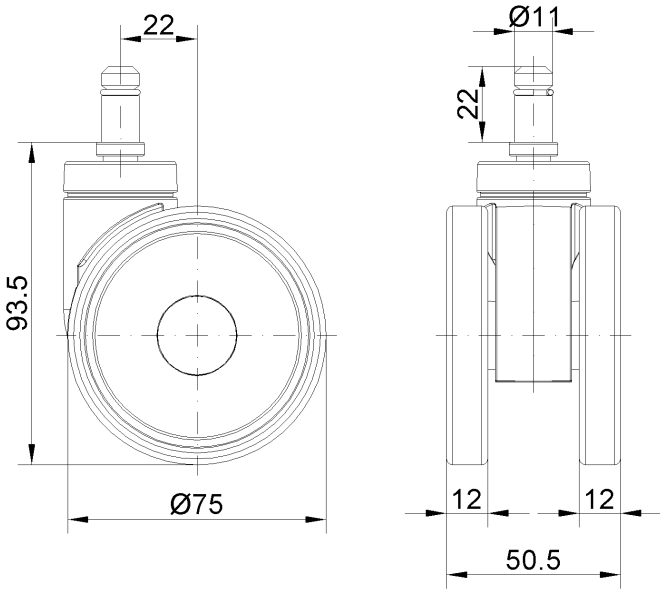
Technical Data

|  |                          |
|--|--------------------------|
| <input checked="" type="radio"/> Imperial <input type="radio"/> Metric |                          |
| Wheel Diameter   | 3 "                      |
| Wheel Width  | 2                        |
| Wheel Bearing  | Wheel With Plain Bearing |
| Threaded Stem  | Ø11                      |
| Threaded Length  | 7/8 "                    |
| Offset   | 7/8 "                    |
| Swivel Interference  | 5-1/4 "                  |
| Overall Height   | 3-3/4 "                  |
| Swivel Radius  | 2-5/8 "                  |
| Hardness Of Tread  | 82±5° Shore A            |
| Load Capacity (Dynamic)  | 66lbs                    |
| Load Capacity (Static)   | 99lbs                    |
| Temperature  | -4°F to +140°F           |
| Fork Type  | Swivel Caster            |
| Stainless  | N/A                      |
| Electrical Conductivity  | N/A                      |
| Anti-Static  | N/A                      |
| Weight   | 0.4lbs                   |
| Standard   | ISO22883                 |

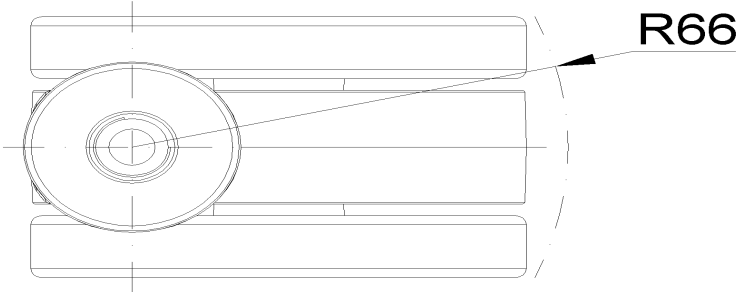
Advantages at a glance

|                            |           |
|----------------------------|-----------|
| Rolling Resistance         | ● ● ● ● ○ |
| Operating Noise            | ● ● ● ● ○ |
| Floor Surface Preservation | ● ● ● ● ● |

Dimensions



Mounting



\* For any deviation between metric and imperial spec, please refer to the metric spec.