



1112-1 2" Wide General Purposes Caster Series

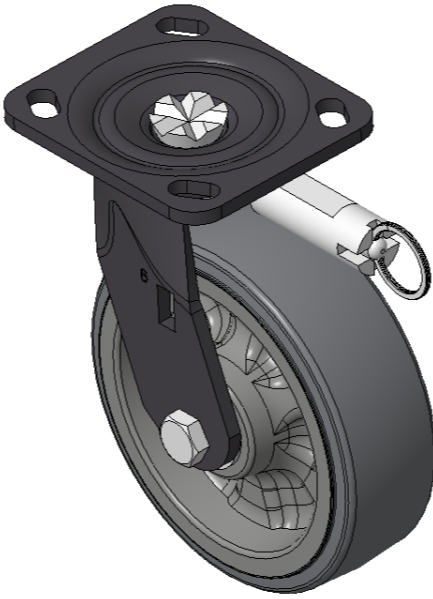
W Resolute (Pearlescent Light Gray) Wheel Diameter × Wheel Width 150 × 50mm

A
KS-11120601454021

Front-brake Casters, Welded Caster Fork, black paint finish
Base plate Mounting Type device, 85x70mm Bolt Hole Spacing
Reinforced Polypropylene rubber elastomer (TPR), Cast Iron red
Bearings—Ball Bearings

Wheel tread: Thermoplastic rubber elastomer (TPR)
Wheel Center: High-quality impact-resistant polypropylene

Drawings are for reference only and may differ from the product



Picture may differ from original product

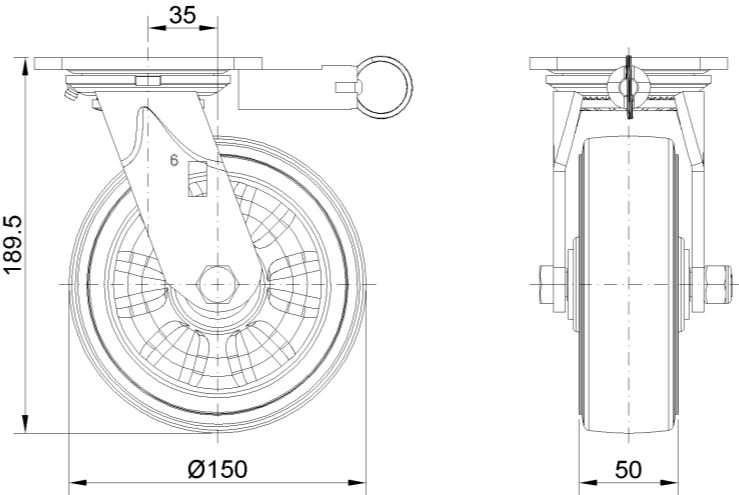
Technical Data

<input checked="" type="radio"/> Imperial <input type="radio"/> Metric	
Wheel Diameter	6 "
Wheel Width	2 "
Wheel Bearing	Wheels With Ball Bearings
Plate Size	4-9/16 " x 4 "
Bolt Hole Spacing	3-3/8 " x 2-3/4 "
Plate Hole	13/16 " x 3/8 "
Offset	1-3/8 "
Swivel Interference	11-1/2 "
Overall Height	7-1/2 "
Swivel Radius	5-13/16 "
Hardness Of Tread	72±5° Shore A
Load Capacity (Dynamic)	899lbs
Load Capacity (Static)	1349lbs
Temperature	-4°F to +140°F
Fork Type	Swivel Caster With Directional Lock
Stainless	N/A
Electrical Conductivity	N/A
Anti-Static	N/A
Weight	5.1lbs
Standard	ISO22883

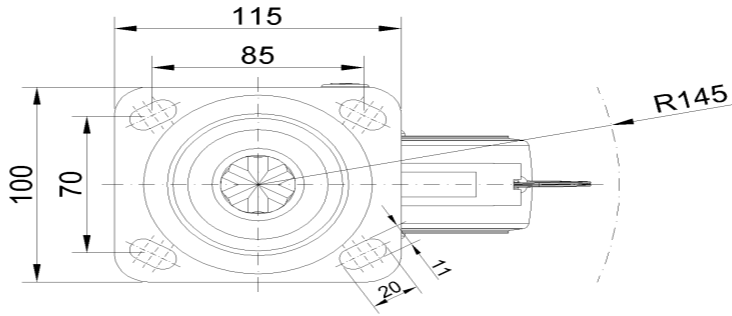
Advantages at a glance

Rolling Resistance	● ● ● ● ●
Operating Noise	● ● ● ● ●
Floor Surface Preservation	● ● ● ● ●

Dimensions



Mounting



* For any deviation between metric and imperial spec, please refer to the metric spec.