



1112-1 2" Wide General Purposes Caster Series

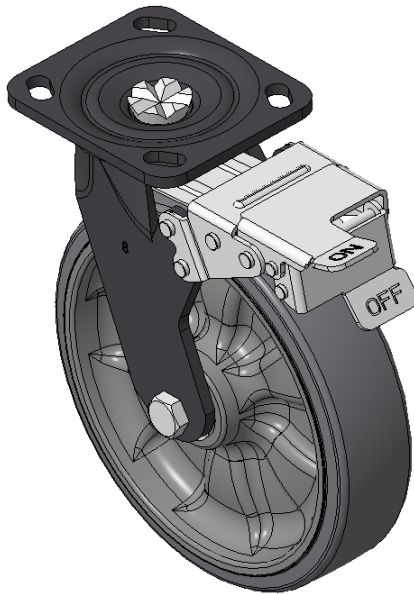
W Resolute (Pearlescent Light Gray) Wheel Diameter × Wheel Width 200 × 50mm

A  
KS-11120801454011

Front-brake Casters, Welded Caster Fork, black paint finish  
Base plate Mounting Type device, 85x70mm Bolt Hole Spacing  
Reinforced Polypropylene rubber elastomer (TPR), Cast Iron red  
Bearings—Ball Bearings

Wheel tread: Thermoplastic rubber elastomer (TPR)  
Wheel Center: High-quality impact-resistant polypropylene

Drawings are for reference only and may differ from the product



Picture may differ from original product

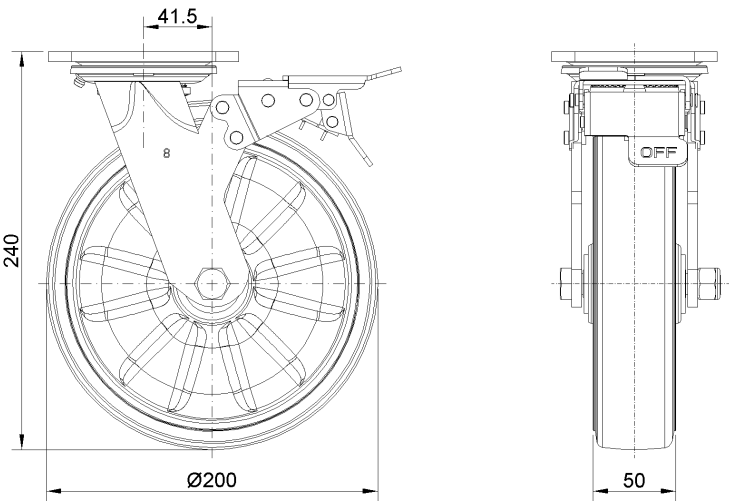
Technical Data

<input checked="" type="radio"/> Metric <input type="radio"/> Imperial	
Wheel Diameter	200mm
Wheel Width	50mm
Wheel Bearing	Wheels With Ball Bearings
Plate Size	115 x 100mm
Bolt Hole Spacing	85 x 70mm
Plate Hole	20 x 11mm
Offset	41.5mm
Swivel Interference	330mm
Overall Height	240mm
Swivel Radius	165mm
Hardness Of Tread	72±5° Shore A
Load Capacity (Dynamic)	306kgs
Load Capacity (Static)	459kgs
Temperature	-20°C to +60°C
Fork Type	Swivel Caster With Front Brake
Stainless	N/A
Electrical Conductivity	N/A
Anti-Static	N/A
Weight	3.03kgs
Standard	ISO22883

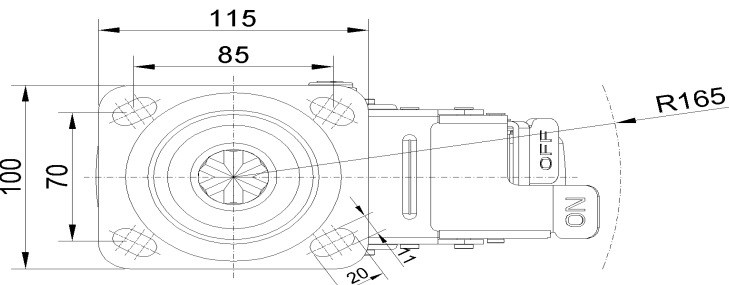
Advantages at a glance

Rolling Resistance	● ● ● ● ●
Operating Noise	● ● ● ● ●
Floor Surface Preservation	● ● ● ● ●

Dimensions



Mounting



\* For any deviation between metric and imperial spec, please refer to the metric spec.