



1112-1 2" Wide General Purposes Caster Series

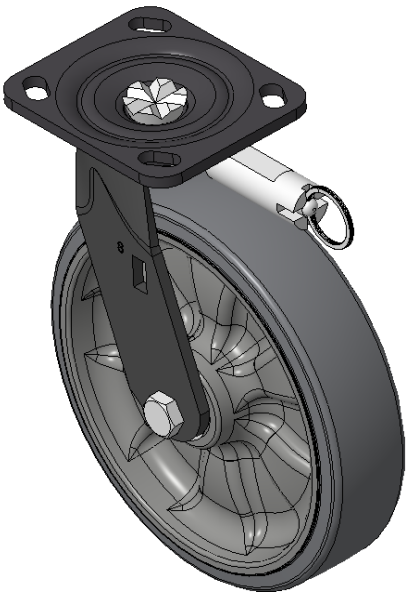
W Resolute (Pearlescent Light Gray) Wheel Diameter × Wheel Width 200 × 50mm

A
KS-11120801454021

Directional brake Casters, Welded Caster Fork, black paint finish
Base plate Mounting Type device, 85x70mm Bolt Hole Spacing
Reinforced Polypropylene rubber elastomer (TPR), Cast Iron red Bearings—Ball Bearings

Wheel tread: Thermoplastic rubber elastomer (TPR)
Wheel Center: High-quality impact-resistant polypropylene

Drawings are for reference only and may differ from the product



Picture may differ from original product

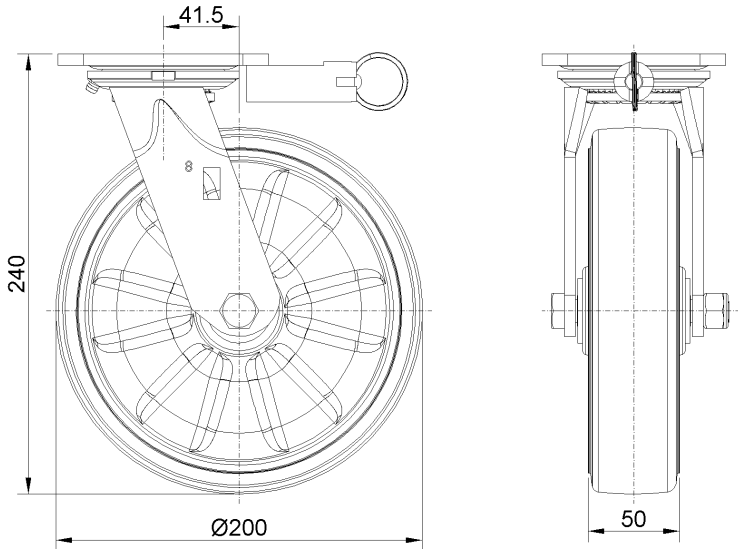
Technical Data

| | |
|--|-------------------------------------|
| <input checked="" type="radio"/> Metric <input type="radio"/> Imperial | |
| Wheel Diameter | 200mm |
| Wheel Width | 50mm |
| Wheel Bearing | Wheels With Ball Bearings |
| Plate Size | 115 x 100mm |
| Bolt Hole Spacing | 85 x 70mm |
| Plate Hole | 20 x 11mm |
| Offset | 41.5mm |
| Swivel Interference | 290mm |
| Overall Height | 240mm |
| Swivel Radius | 145mm |
| Hardness Of Tread | 72±5° Shore A |
| Load Capacity (Dynamic) | 306kgs |
| Load Capacity (Static) | 459kgs |
| Temperature | -20°C to +60°C |
| Fork Type | Swivel Caster With Directional Lock |
| Stainless | N/A |
| Electrical Conductivity | N/A |
| Anti-Static | N/A |
| Weight | 2.80kgs |
| Standard | ISO22883 |

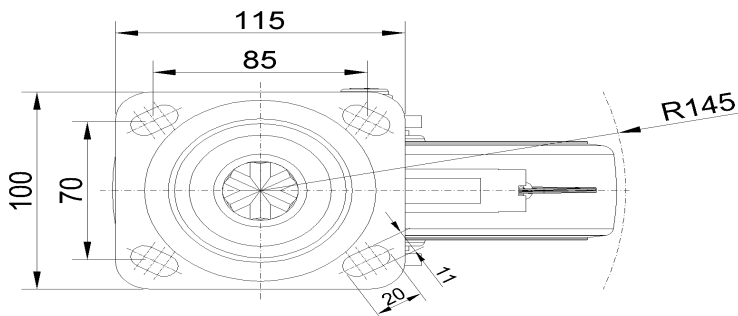
Advantages at a glance

| | |
|----------------------------|-----------|
| Rolling Resistance | ● ● ● ● ● |
| Operating Noise | ● ● ● ● ● |
| Floor Surface Preservation | ● ● ● ● ● |

Dimensions



Mounting



* For any deviation between metric and imperial spec, please refer to the metric spec.