



1112-1 2" Wide General Purposes Caster Series

W Resolute (Pearlescent Light Gray) Wheel Diameter x Wheel Width 200 x 50mm

A

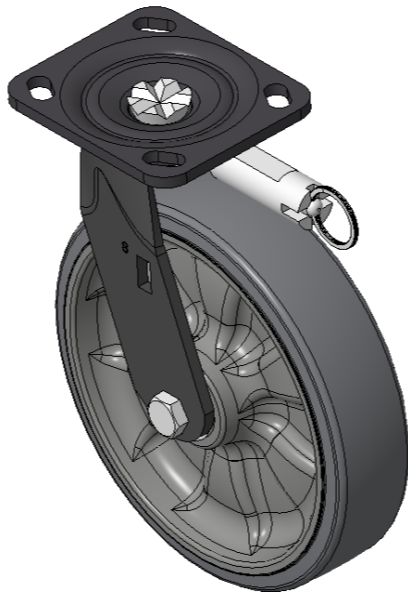
KS-11120801454021

Directional brake Casters, Welded Caster Fork, black paint finish
Base plate Mounting Type device, 85x70mm Bolt Hole Spacing
Reinforced Polypropylene rubber elastomer (TPR), Cast Iron red
Bearings—Ball Bearings

Wheel tread: Thermoplastic rubber elastomer (TPR)

Wheel Center: High-quality impact-resistant polypropylene

Drawings are for reference only and may differ from the product



Technical Data

☒ Imperial ☐ Metric

Wheel Diameter 8"

Wheel Width 2"

Wheel Bearing Wheels With Ball Bearings

Plate Size	4-9/16 " x 4 "
------------	----------------

Bolt Hole Spacing 3-3/8 " x 2-3/4 "

Plate Hole 13/16" x 3/8"

Offset 1-11/16 "

Swivel Interference 11-1/2"

Overall Height 9-1/2 "

Swivel Radius 5-13/16"

Hardness Of Tread 72±5° Shore A

Load Capacity (Dynamic)	675lbs
-------------------------	--------

Load Capacity (Static)	1012lbs
------------------------	---------

Temperature -4°F to +140°F

Fork Type Swivel Caster With Directional Lock

Stainless	N/A
-----------	-----

Electrical Conductivity	N/A
-------------------------	-----

Anti-Static	N/A
-------------	-----

Weight 6.2lbs

Standard ISO22883

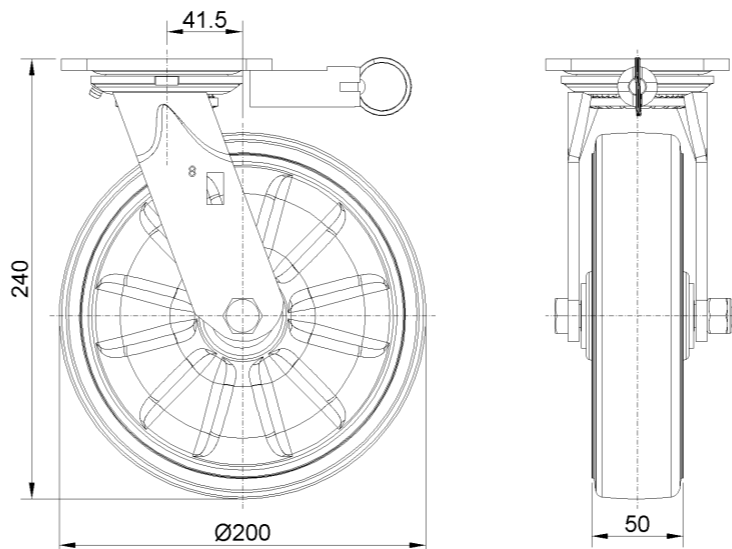
Advantages at a glance

Rolling Resistance ● ● ● ● ●

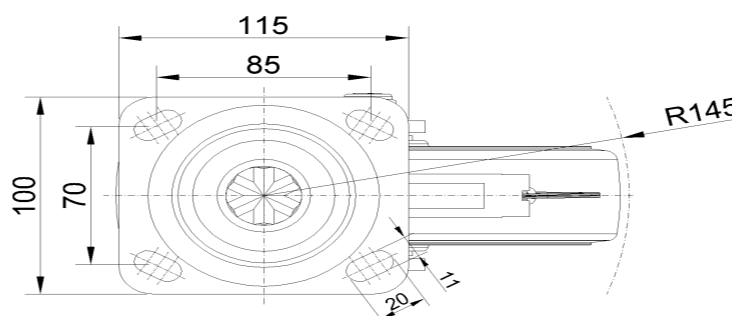
Operating Noise ● ● ● ● ●

Floor Surface Preservation ● ● ● ● ●

Dimensions



Mounting



* For any deviation between metric and imperial spec, please refer to the metric spec.