



1112-1 2" Wide General Purposes Caster Series

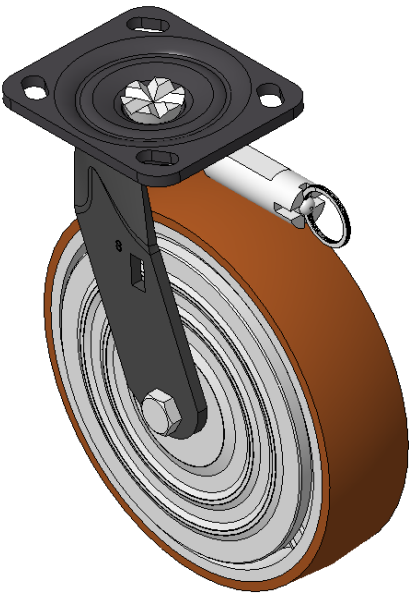
QPU (brown round) Wheel Diameter x Wheel Width 200 x 50mm

A  
KS-11120801534021

Directional brake Casters, Welded Caster Fork, black paint finish  
Base plate Mounting Type device, 85x70mm Bolt Hole Spacing  
Cast Iron Wheel Center, High Quality Polyurethane Wheel Tread, Cast Iron brown  
Bearings—Ball Bearings, with iron caps

Wheel Tread: Hhigh-Quality Polyurethane  
Wheel Center: Iron core/Cast iron core

Drawings are for reference only and may differ from the product



Picture may differ from original product

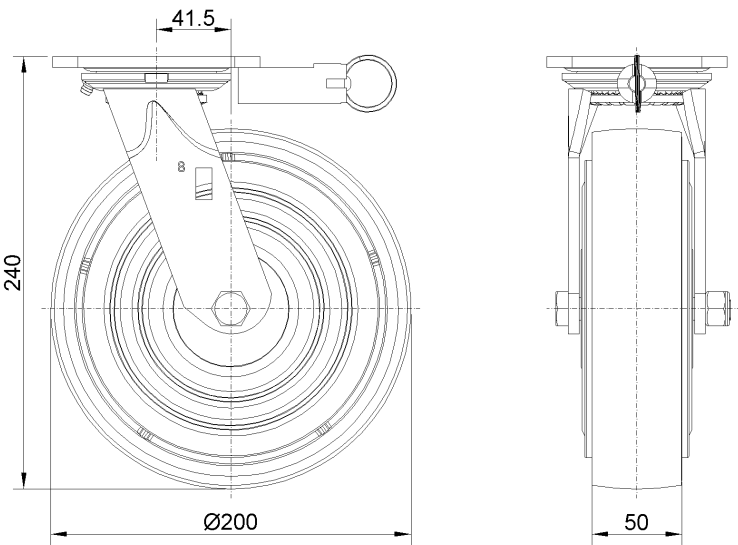
Technical Data

<input checked="" type="radio"/> Imperial <input type="radio"/> Metric	
Wheel Diameter	8 "
Wheel Width	1-13/16 "
Wheel Bearing	Wheels With Ball Bearings
Plate Size	4-9/16 " x 4 "
Bolt Hole Spacing	3-3/8 " x 2-3/4 "
Plate Hole	13/16 " x 3/8 "
Offset	1-11/16 "
Swivel Interference	11-1/2 "
Overall Height	9-1/2 "
Swivel Radius	5-13/16 "
Hardness Of Tread	92±5° Shore A
Load Capacity (Dynamic)	661lbs
Load Capacity (Static)	992lbs
Temperature	-4°F to +158°F
Fork Type	Swivel Caster With Directional Lock
Stainless	N/A
Electrical Conductivity	N/A
Anti-Static	N/A
Weight	10.6lbs
Standard	ISO22883

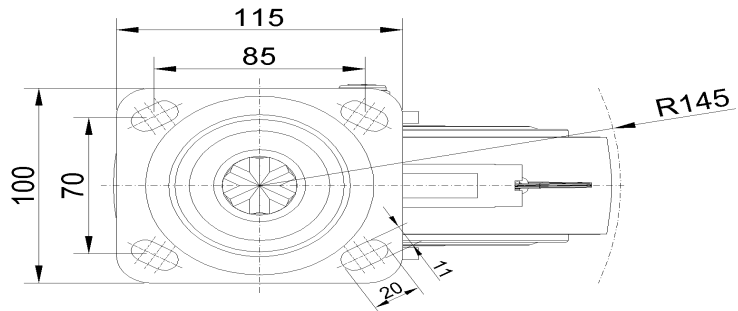
Advantages at a glance

Rolling Resistance	● ● ● ● ●
Operating Noise	● ● ● ● ●
Floor Surface Preservation	● ● ● ● ●

Dimensions



Mounting



\* For any deviation between metric and imperial spec, please refer to the metric spec.