



1112-1 2" Wide General Purposes Caster Series

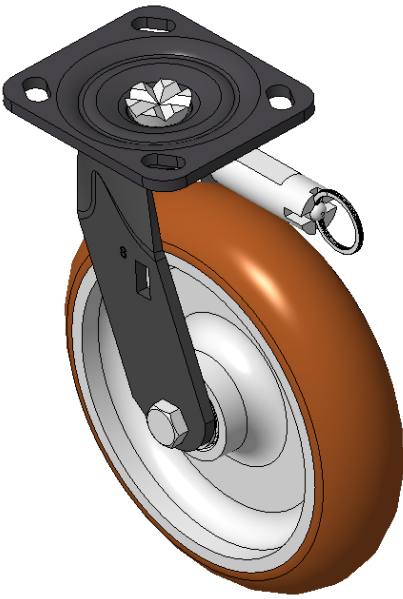
EQPU (brown round) Wheel Diameter x Wheel Width 200 x 50mm

A  
KS-11120801554021

Directional brake Casters, Welded Caster Fork, black paint finish  
Base plate Mounting Type device, 85x70mm Bolt Hole Spacing  
Cast Iron Wheel Center, High Quality Polyurethane Wheel Tread, Cast Iron brown  
Bearings—Ball Bearings

Wheel Tread: Hhigh-Quality Polyurethane  
Wheel Center: Iron core / Cast iron core

Drawings are for reference only and may differ from the product



Picture may differ from original product

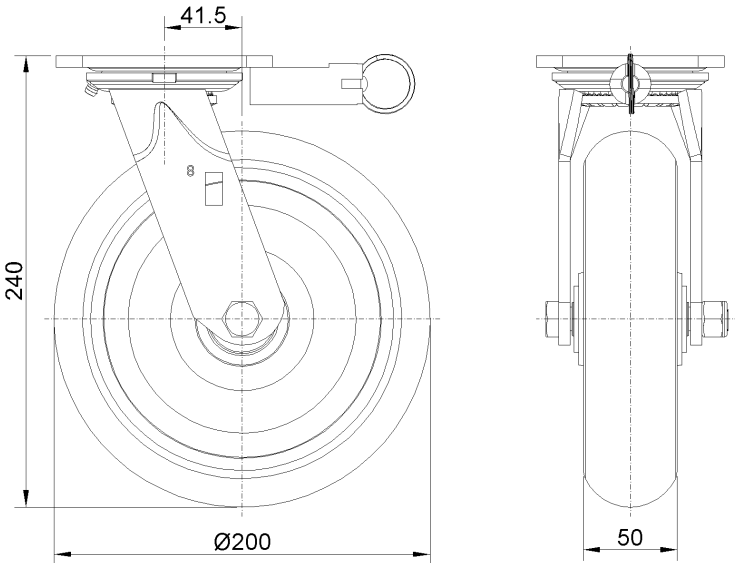
Technical Data

|                                                                        |                                     |
|------------------------------------------------------------------------|-------------------------------------|
| <input checked="" type="radio"/> Metric <input type="radio"/> Imperial |                                     |
| Wheel Diameter                                                         | 200mm                               |
| Wheel Width                                                            | 50mm                                |
| Wheel Bearing                                                          | Wheels With Ball Bearings           |
| Plate Size                                                             | 115 x 100mm                         |
| Bolt Hole Spacing                                                      | 85 x 70mm                           |
| Plate Hole                                                             | 20 x 11mm                           |
| Offset                                                                 | 41.5mm                              |
| Swivel Interference                                                    | 290mm                               |
| Overall Height                                                         | 240mm                               |
| Swivel Radius                                                          | 145mm                               |
| Hardness Of Tread                                                      | 92±5° Shore A                       |
| Load Capacity (Dynamic)                                                | 700kgs                              |
| Load Capacity (Static)                                                 | 1050kgs                             |
| Temperature                                                            | -20°C to +70°C                      |
| Fork Type                                                              | Swivel Caster With Directional Lock |
| Stainless                                                              | N/A                                 |
| Electrical Conductivity                                                | N/A                                 |
| Anti-Static                                                            | N/A                                 |
| Weight                                                                 | 5.12kgs                             |
| Standard                                                               | ISO22883                            |

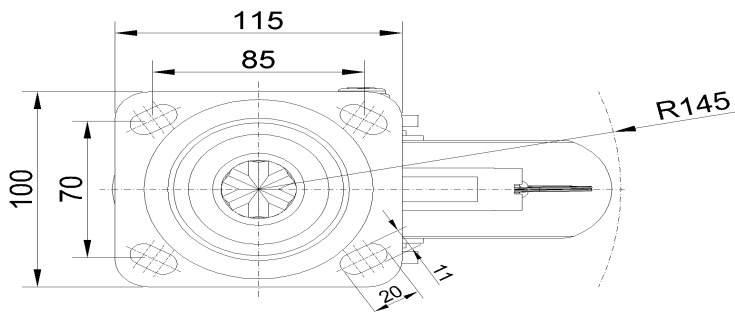
Advantages at a glance

|                            |           |
|----------------------------|-----------|
| Rolling Resistance         | ● ● ● ● ● |
| Operating Noise            | ● ● ● ● ● |
| Floor Surface Preservation | ● ● ● ● ● |

Dimensions



Mounting



\* For any deviation between metric and imperial spec, please refer to the metric spec.