



1115-1 Economy -1 Spring Wheel Series

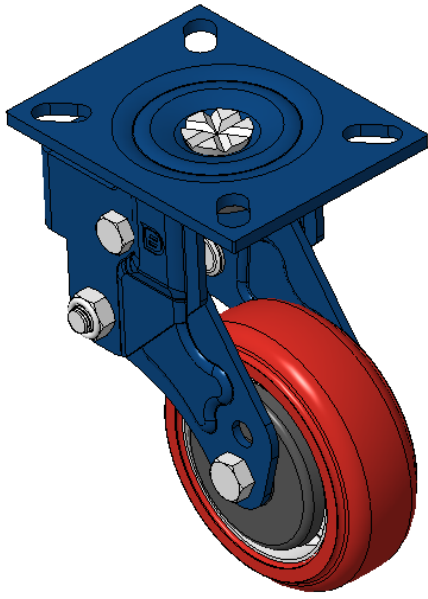
PU (red round) Wheel Diameter x Wheel Width 125 x 45mm

EAN  
KS-11150501332051B

Swivel Spring-loaded Caster with Welded Caster Fork  
Blue painted finish, Mounting Type - Top Plate, 105 x 78.5 Bolt Hole Spacing  
Cast Iron core with High Quality Polyurethane Wheel Tread  
Cast Iron red, Bearing – Ball Bearings

Wheel tread: Made of high-quality polyurethane  
Wheel Center: iron core/cast iron core

Drawings are for reference only and may differ from the product



Picture may differ from original product

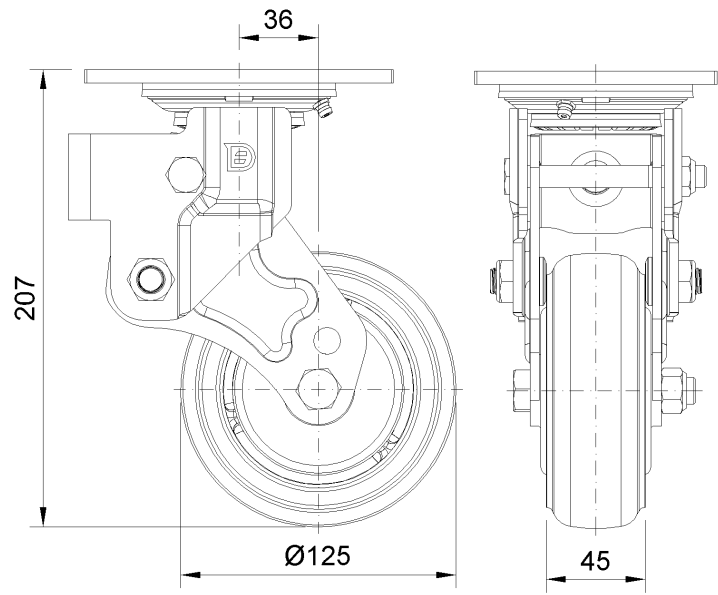
Technical Data

<input checked="" type="radio"/> Metric <input type="radio"/> Imperial	
Wheel Diameter	125mm
Wheel Width	45mm
Wheel Bearing	Wheels With Ball Bearings
Plate Size	140 x 110mm
Bolt Hole Spacing	105 x 78.5mm
Plate Hole	25 x 13.5mm
Offset	36mm
Swivel Interference	218mm
Overall Height	207mm
Swivel Radius	109mm
Hardness Of Tread	92±5° Shore A
Load Capacity (Dynamic)	350kgs
Load Capacity (Static)	525kgs
Temperature	-20°C to +70°C
Fork Type	Swivel Caster
Stainless	N/A
Electrical Conductivity	N/A
Anti-Static	N/A
Weight	3.98kgs
Standard	ISO22883

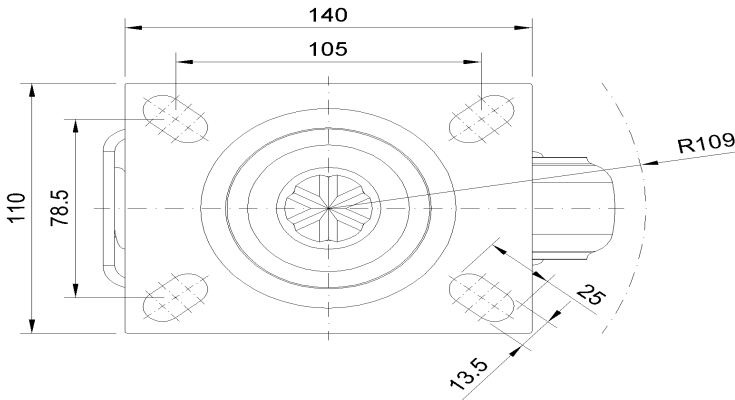
Advantages at a glance

Rolling Resistance	● ● ● ○ ○
Operating Noise	● ● ● ● ○
Floor Surface Preservation	● ● ● ● ○

Dimensions



Mounting



\* For any deviation between metric and imperial spec, please refer to the metric spec.