



1115-1 Economy -1 Spring Wheel Series

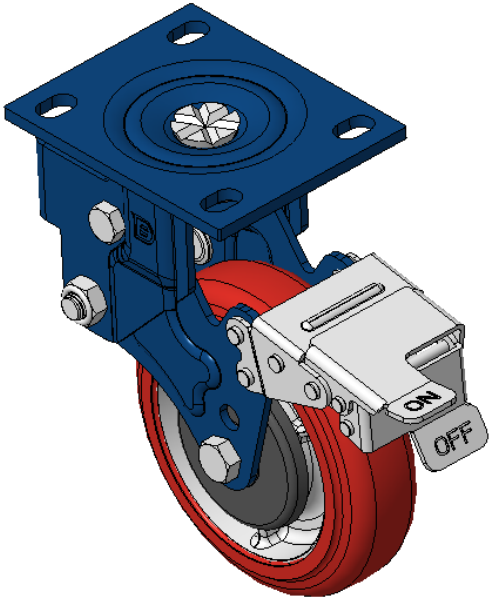
PU (red round) Wheel Diameter x Wheel Width 150 x 45mm

EAN
KS-11150601334231B

Spring-loaded Caster with front brake, Welded Caster Fork Blue-painted finish, Mounting Type - Top Plate, 105 x 77.5 Bolt Hole Spacing Cast Iron core, High Quality Polyurethane Wheel Tread Red Cast Iron finish, Ball Bearings

Wheel tread: Made of high-quality polyurethane
Wheel Center: iron core/cast iron core

Drawings are for reference only and may differ from the product



Picture may differ from original product

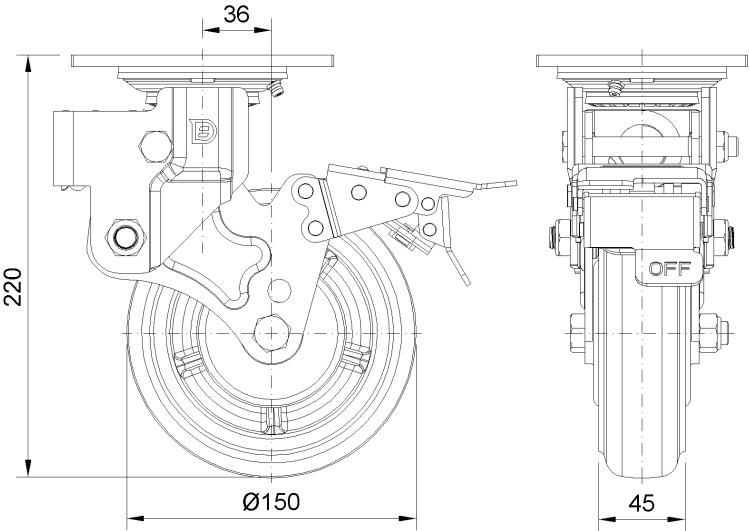
Technical Data

<input checked="" type="radio"/> Metric <input type="radio"/> Imperial	
Wheel Diameter	150mm
Wheel Width	45mm
Wheel Bearing	Wheels With Ball Bearings
Plate Size	137 x 110mm
Bolt Hole Spacing	105 x 77.5mm
Plate Hole	20 x 13mm
Offset	36mm
Swivel Interference	380mm
Overall Height	220mm
Swivel Radius	190mm
Hardness Of Tread	92±5° Shore A
Load Capacity (Dynamic)	420kgs
Load Capacity (Static)	630kgs
Temperature	-20°C to +70°C
Fork Type	Swivel Caster With Front Brake
Stainless	N/A
Electrical Conductivity	N/A
Anti-Static	N/A
Weight	5.11kgs
Standard	ISO22883

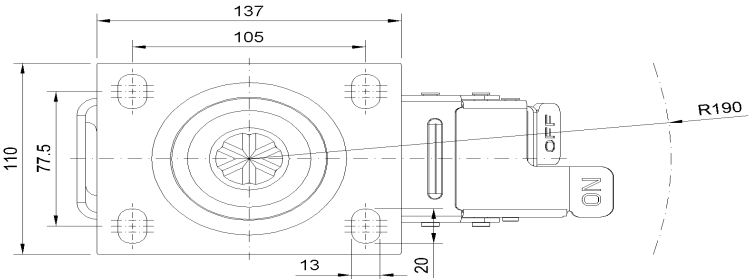
Advantages at a glance

Rolling Resistance	● ● ● ○ ○
Operating Noise	● ● ● ● ○
Floor Surface Preservation	● ● ● ● ○

Dimensions



Mounting



* For any deviation between metric and imperial spec, please refer to the metric spec.