



1115-1 Economy -1 Spring Wheel Series

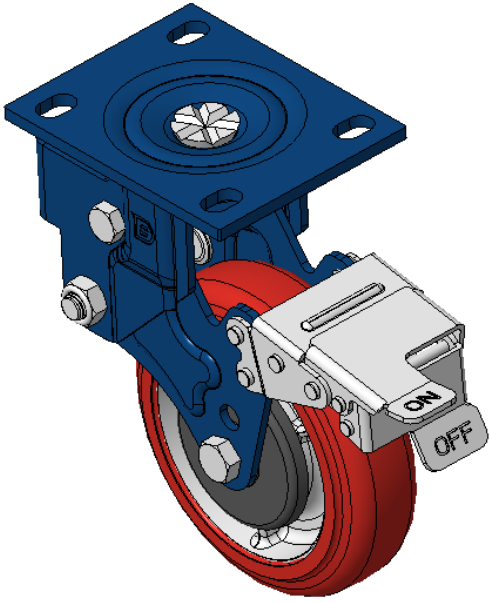
PU (red round) Wheel Diameter x Wheel Width 150 x 45mm

EAN
KS-11150601334231B

Spring-loaded Caster with front brake, Welded Caster Fork Blue-painted finish, Mounting Type - Top Plate, 105 x 77.5 Bolt Hole Spacing Cast Iron core, High Quality Polyurethane Wheel Tread Red Cast Iron finish, Ball Bearings

Wheel tread: Made of high-quality polyurethane
Wheel Center: iron core/cast iron core

Drawings are for reference only and may differ from the product



Picture may differ from original product

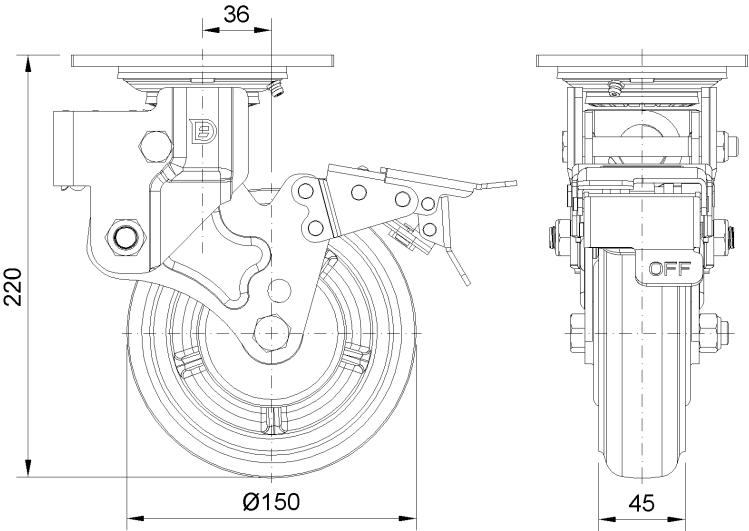
Technical Data

<input checked="" type="radio"/> Imperial <input type="radio"/> Metric	
Wheel Diameter	6 "
Wheel Width	1-13/16 "
Wheel Bearing	Wheels With Ball Bearings
Plate Size	5-1/2 " x 4-3/8 "
Bolt Hole Spacing	4-1/8 " x 3-1/16 "
Plate Hole	13/16 " x 9/16 "
Offset	1-7/16 "
Swivel Interference	14-31/32 "
Overall Height	8-3/4 "
Swivel Radius	7-1/2 "
Hardness Of Tread	92±5° Shore A
Load Capacity (Dynamic)	926lbs
Load Capacity (Static)	1389lbs
Temperature	-4°F to +158°F
Fork Type	Swivel Caster With Front Brake
Stainless	N/A
Electrical Conductivity	N/A
Anti-Static	N/A
Weight	11.3lbs
Standard	ISO22883

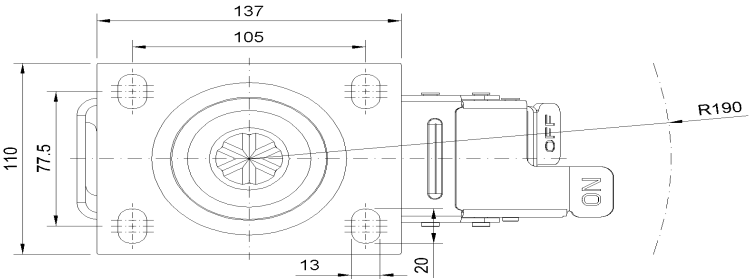
Advantages at a glance

Rolling Resistance	● ● ● ○ ○
Operating Noise	● ● ● ● ○
Floor Surface Preservation	● ● ● ● ○

Dimensions



Mounting



* For any deviation between metric and imperial spec, please refer to the metric spec.