



1115 Spring-loaded Caster Series (Regular)

Non-marking NBR Rubber (milling) Wheel Diameter x Wheel Width 250 x 63mm

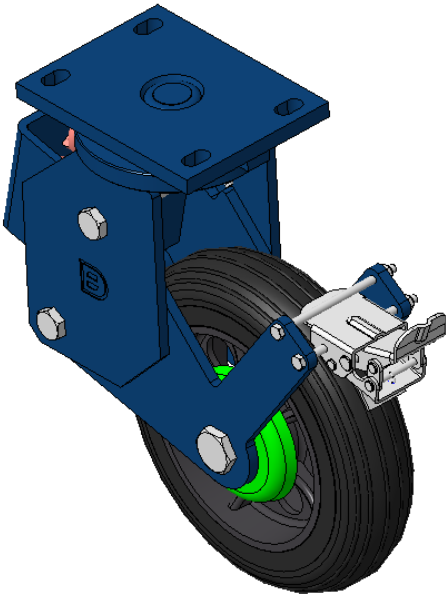
A

KS-11151000044551

Spring-loaded Caster with rear brake, Welded Caster Fork Blue-painted finish, Mounting Type - Top Plate, 140x85 Bolt Hole Spacing Cast Iron core, High Quality Polyurethane Wheel Tread Cast Iron black, Bearing—Ball Bearings

Wheel tread: Made of high-quality polyurethane
Wheel Center: iron core/cast iron core

Drawings are for reference only and may differ from the product



Picture may differ from original product

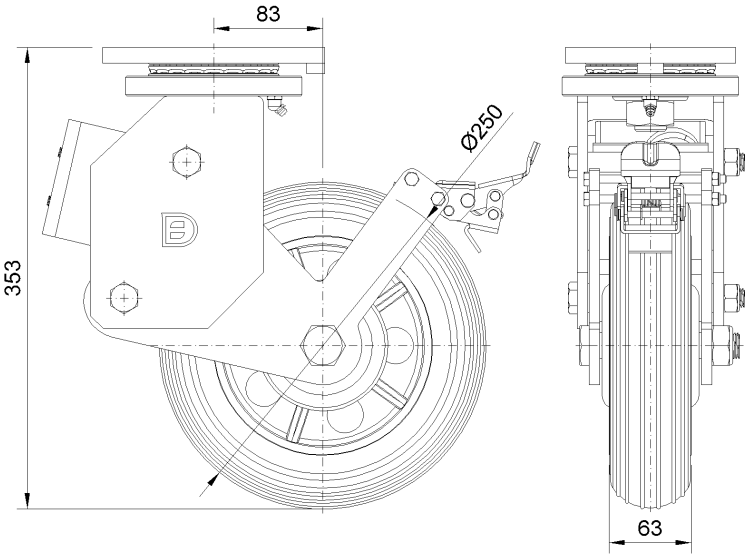
Technical Data

<input checked="" type="radio"/> Metric <input type="radio"/> Imperial	
Wheel Diameter	250mm
Wheel Width	63mm
Wheel Bearing	Wheels With Ball Bearings
Plate Size	170 x 130mm
Bolt Hole Spacing	140x85mm
Plate Hole	22 x 13mm
Offset	83mm
Swivel Interference	510mm
Overall Height	353mm
Swivel Radius	255mm
Hardness Of Tread	85±5° Shore A
Load Capacity (Dynamic)	350kgs
Load Capacity (Static)	525kgs
Temperature	-20°C to +80°C
Fork Type	Swivel Caster With Rear Brake
Stainless	N/A
Electrical Conductivity	N/A
Anti-Static	N/A
Weight	16.57kgs
Standard	ISO22883

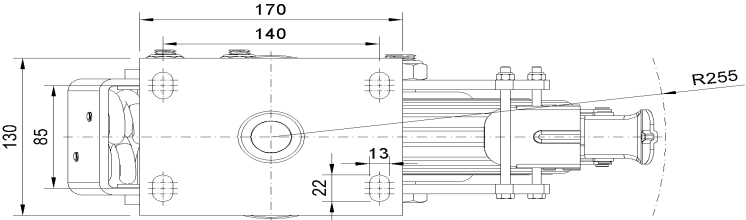
Advantages at a glance

Rolling Resistance	● ● ● ○ ○
Operating Noise	● ● ● ● ○
Floor Surface Preservation	● ● ● ● ○

Dimensions



Mounting



* For any deviation between metric and imperial spec, please refer to the metric spec.