



1115 Spring-loaded Caster Series (Regular)

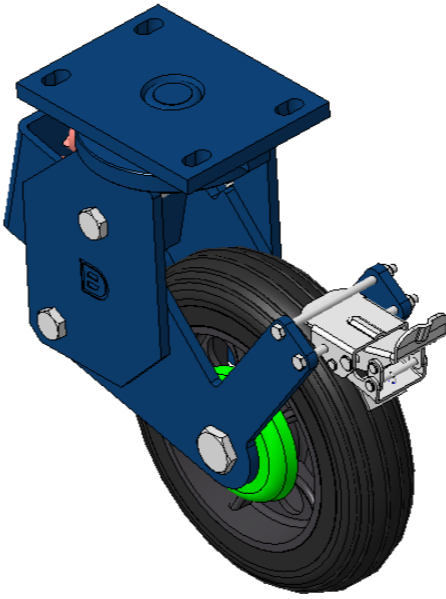
Non-marking NBR Rubber (milling) Wheel Diameter x Wheel Width 250 x 63mm

A
KS-11151000044551

Spring-loaded Caster with rear brake, Welded Caster Fork Blue-painted finish, Mounting Type - Top Plate, 140x85 Bolt Hole Spacing Cast Iron core, High Quality Polyurethane Wheel Tread Cast Iron black, Bearing—Ball Bearings

Wheel tread: Made of high-quality polyurethane
Wheel Center: iron core/cast iron core

Drawings are for reference only and may differ from the product



Picture may differ from original product

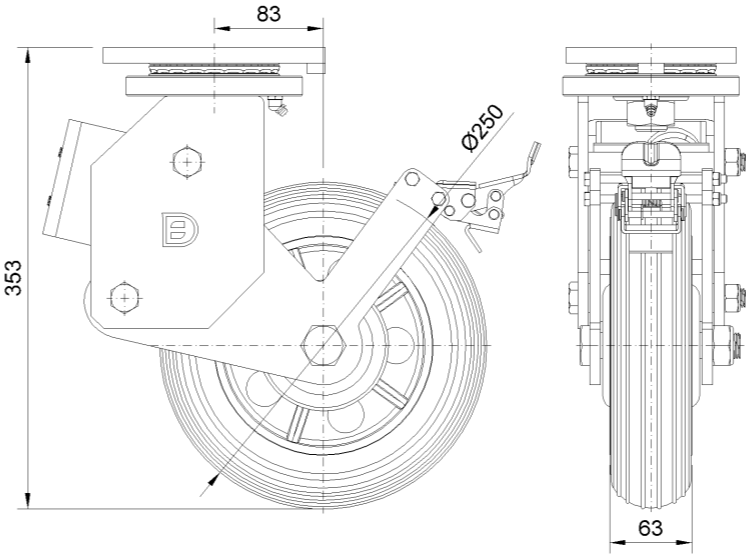
Technical Data

<input checked="" type="radio"/> Imperial <input type="radio"/> Metric	
Wheel Diameter	10 "
Wheel Width	2-1/2 "
Wheel Bearing	Wheels With Ball Bearings
Plate Size	6-13/16 " x 5-3/16 "
Bolt Hole Spacing	5-1/2 " x3-3/8 "
Plate Hole	7/8 " x 9/16 "
Offset	3-5/16 "
Swivel Interference	20-5/64 "
Overall Height	14 "
Swivel Radius	10-1/16 "
Hardness Of Tread	85±5° Shore A
Load Capacity (Dynamic)	772lbs
Load Capacity (Static)	1157lbs
Temperature	-4°F to +176°F
Fork Type	Swivel Caster With Rear Brake
Stainless	N/A
Electrical Conductivity	N/A
Anti-Static	N/A
Weight	36.5lbs
Standard	ISO22883

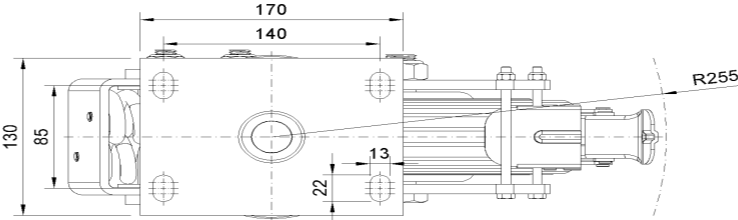
Advantages at a glance

Rolling Resistance	● ● ● ○ ○
Operating Noise	● ● ● ● ○
Floor Surface Preservation	● ● ● ● ○

Dimensions



Mounting



* For any deviation between metric and imperial spec, please refer to the metric spec.