



1123 Shopping Cart Casters Series

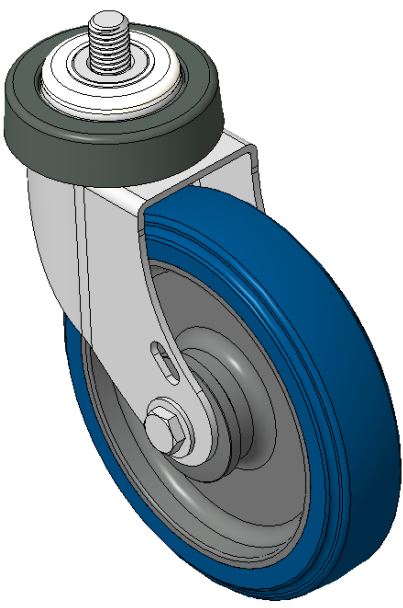
Flat Surface Wheel (Gray Dark Blue) Wheel Diameter × Wheel Width 125×30mm

EAN  
KS-11230500392183

Swivel Casters, Threaded Stem installation, thread type M12x25  
Rust-proof, Corrosion resistant, Attractive appearance, Economical, and rotates smoothly  
High-Quality Impact-Resistant Polypropylene Wheel Center, High-Quality Reinforced Polypropylene Rubber (TPR) Wheel Tread  
Dark gray-blue, Bearing—Ball Bearings

Wheel tread: Thermoplastic rubber elastomer (TPR)  
Wheel Center: Made of high-quality impact-resistant polypropylene

Drawings are for reference only and may differ from the product



Picture may differ from original product

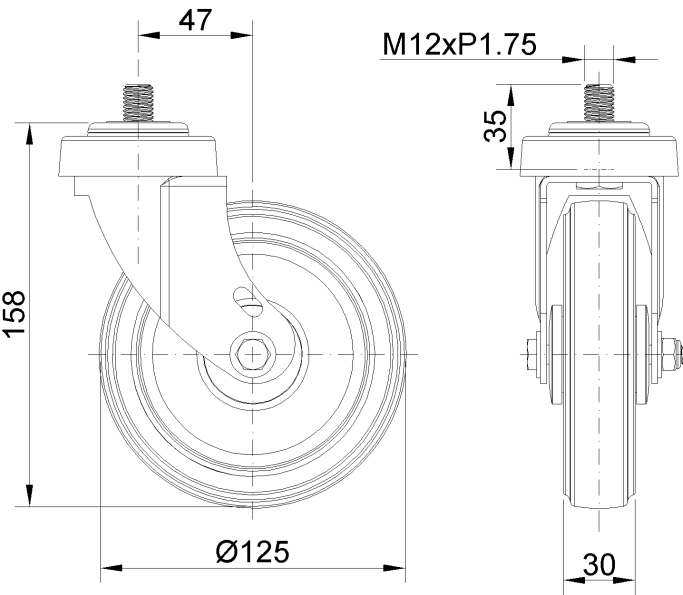
Technical Data

|  |                           |
|--|---------------------------|
| <input checked="" type="radio"/> Metric <input type="radio"/> Imperial |                           |
| Wheel Diameter   | 125mm                     |
| Wheel Width  | 30mm                      |
| Wheel Bearing  | Wheels With Ball Bearings |
| Threaded Stem  | M12                       |
| Threaded Length  | 35mm                      |
| Offset   | 47mm                      |
| Swivel Interference  | 220mm                     |
| Overall Height   | 158mm                     |
| Swivel Radius  | 110mm                     |
| Hardness Of Tread  | 82±5° Shore A             |
| Load Capacity (Dynamic)  | 100kgs                    |
| Load Capacity (Static)   | 150kgs                    |
| Temperature  | -20°C to +60°C            |
| Fork Type  | Swivel Caster             |
| Stainless  | N/A                       |
| Electrical Conductivity  | N/A                       |
| Anti-Static  | N/A                       |
| Weight   | 0.61kgs                   |
| Standard   | ISO22883                  |

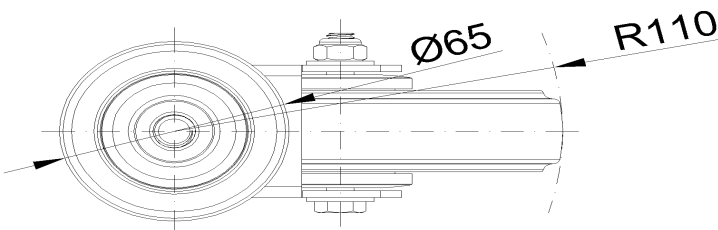
Advantages at a glance

|                            |           |
|----------------------------|-----------|
| Rolling Resistance         | ● ● ● ● ○ |
| Operating Noise            | ● ● ● ● ○ |
| Floor Surface Preservation | ● ● ● ● ● |

Dimensions



Mounting



\* For any deviation between metric and imperial spec, please refer to the metric spec.