



1141 Kingpinless Caster Series

CPD Wheel Diameter x Wheel Width 125 x 40mm

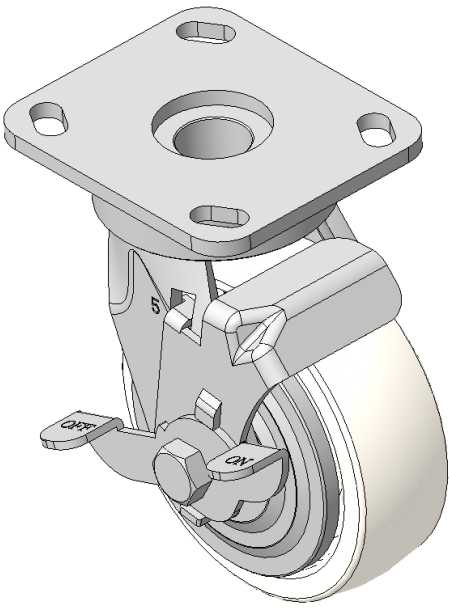
EAN

KS-11410500294013

Casters with Side Brakes and With locking system, Welded Caster Fork  
Zine-Plated, Mounting Type - Top Plate, 85x70 Bolt Hole Spacing  
Polypropylene Wheel Center, natural Wheel Tread  
Bearings—Ball Bearings

Wheel surface: PP polypropylene  
Wheel Center: PP polypropylene

Drawings are for reference only and may differ from the product



Picture may differ from original product

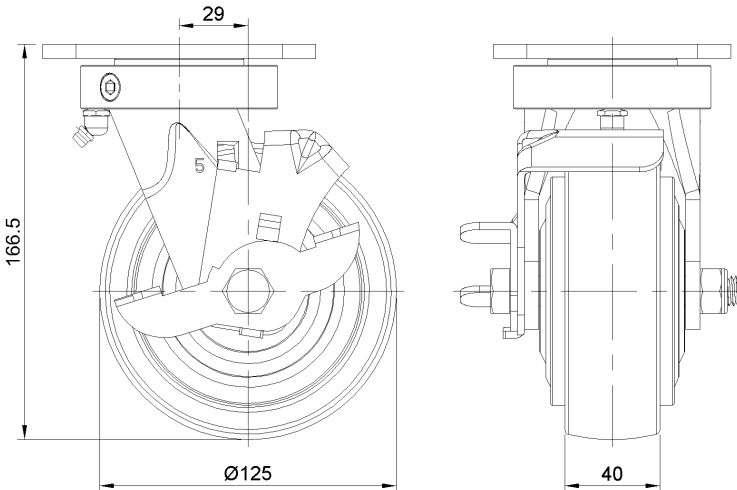
Technical Data

<input checked="" type="radio"/> Metric <input type="radio"/> Imperial	
Wheel Diameter	125mm
Wheel Width	40mm
Wheel Bearing	Wheels With Ball Bearings
Plate Size	115 x 100mm
Bolt Hole Spacing	85 x 70mm
Plate Hole	20 x 11mm
Offset	29mm
Swivel Interference	204mm
Overall Height	166.5mm
Swivel Radius	102mm
Hardness Of Tread	72±5° Shore D
Load Capacity (Dynamic)	250kgs
Load Capacity (Static)	375kgs
Temperature	-12°C to +60°C
Fork Type	Swivel Caster With Side Brake
Stainless	N/A
Electrical Conductivity	N/A
Anti-Static	N/A
Weight	2.46kgs
Standard	ISO22883

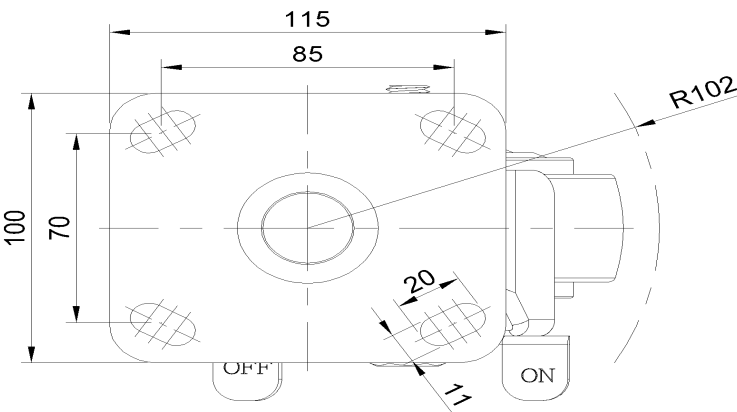
Advantages at a glance

Rolling Resistance	● ● ● ● ●
Operating Noise	● ● ● ○ ○
Floor Surface Preservation	● ● ● ○ ○

Dimensions



Mounting



\* For any deviation between metric and imperial spec, please refer to the metric spec.