



1152 Anti-Friction Caster Series

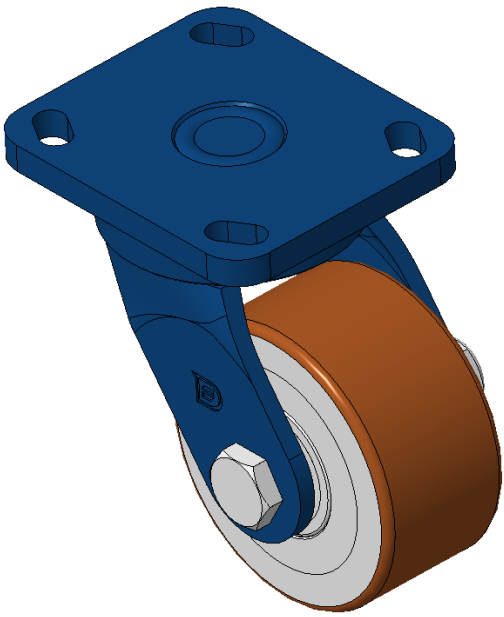
QPU (Brown Flat) Wheel Diameter x Wheel Width 100 x 50mm

EAN
KS-11520400532011

Swivel Caster, Welded Caster Fork - 85x70 Bolt Hole Spacing
Blue painted finish, Mounting Type - Top Plate
Cast Iron core, High Quality Polyurethane Wheel Tread
Cast Iron brown, Bearing - Ball Bearing

Wheel Tread: Hhigh-Quality Polyurethane
Wheel Center: iron core/cast iron core

Drawings are for reference only and may differ from the product



Picture may differ from original product

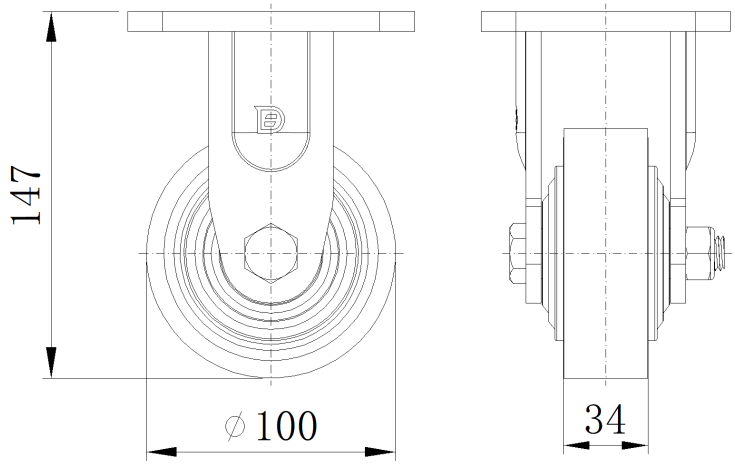
Technical Data

<input checked="" type="radio"/> Metric <input type="radio"/> Imperial	
Wheel Diameter	100mm
Wheel Width	50mm
Wheel Bearing	Wheels With Ball Bearings
Plate Size	115 x 100mm
Bolt Hole Spacing	85 x 70mm
Plate Hole	20 x 11mm
Offset	45mm
Swivel Interference	196mm
Overall Height	142mm
Swivel Radius	98mm
Hardness Of Tread	92±5° Shore A
Load Capacity (Dynamic)	500kgs
Load Capacity (Static)	750kgs
Temperature	-20°C to +70°C
Fork Type	Swivel Caster
Stainless	N/A
Electrical Conductivity	N/A
Anti-Static	N/A
Weight	3.67kgs
Standard	ISO22883

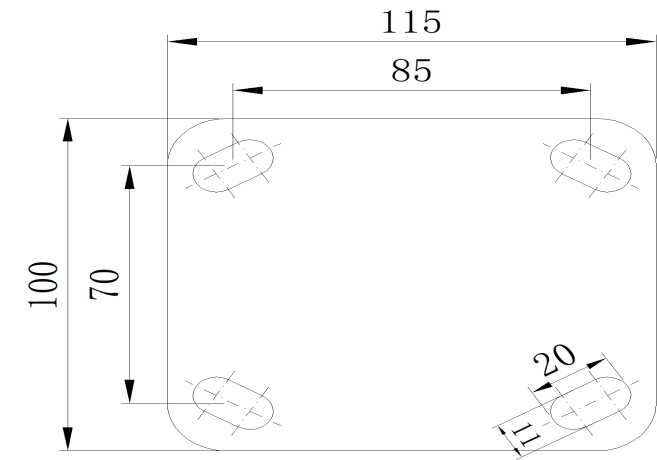
Advantages at a glance

Rolling Resistance	● ● ● ● ●
Operating Noise	● ● ● ● ●
Floor Surface Preservation	● ● ● ● ●

Dimensions



Mounting



* For any deviation between metric and imperial spec, please refer to the metric spec.