



1152 Anti-Friction Caster (B Type) Series

QPU (Brown round) Wheel Diameter × Wheel Width 125 x 40mm

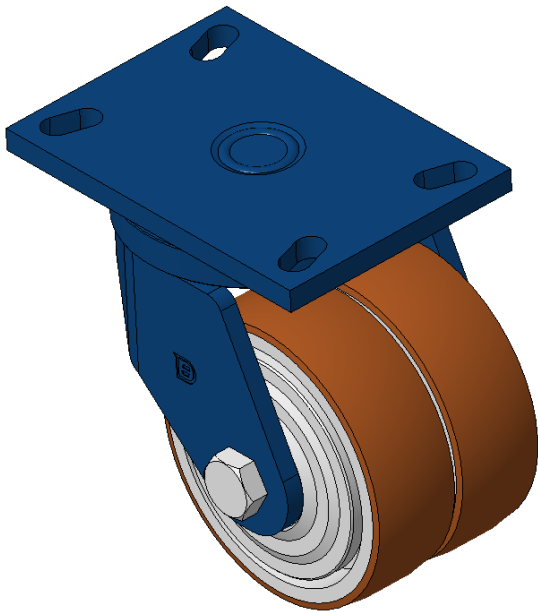
EAN

KS-11520500532161

Swivel Caster with Welded Caster Fork, blue-painted finish. Mounting Type - Top Plate, 129 x 74 Bolt Hole Spacing. Cast Iron Wheel Center with High Quality Polyurethane tread, Cast Iron brown. Bearing—Ball Bearing.

Wheel tread: Made of high-quality polyurethane  
Wheel Center: iron core/cast iron core

Drawings are for reference only and may differ from the product



Picture may differ from original product

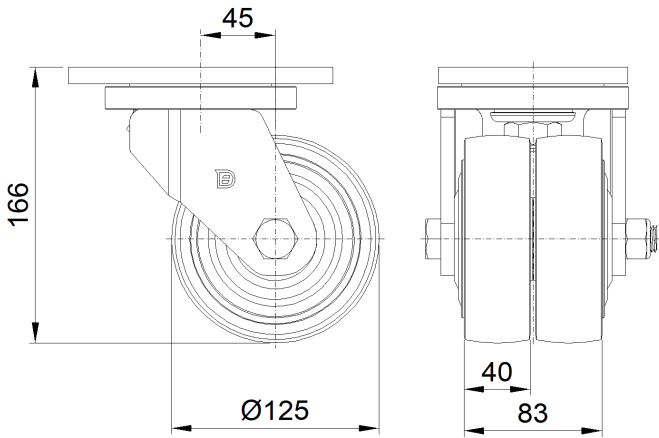
Technical Data

<input checked="" type="radio"/> Imperial <input type="radio"/> Metric	
Wheel Diameter	5 "
Wheel Width	83mm
Wheel Bearing	Wheels With Ball Bearings
Plate Size	4-1/2 " x 6-3/8 "
Bolt Hole Spacing	5-1/8"x2-7/8"
Plate Hole	9/16 " x 1-1/16 "
Offset	1-13/16 "
Swivel Interference	9-1/2 "
Overall Height	6-9/16 "
Swivel Radius	4-3/4 "
Hardness Of Tread	92±5° Shore A
Load Capacity (Dynamic)	2183lbs
Load Capacity (Static)	3267lbs
Temperature	-4°F to +158°F
Fork Type	Swivel Caster
Stainless	N/A
Electrical Conductivity	N/A
Anti-Static	N/A
Weight	14.0lbs
Standard	ISO22883

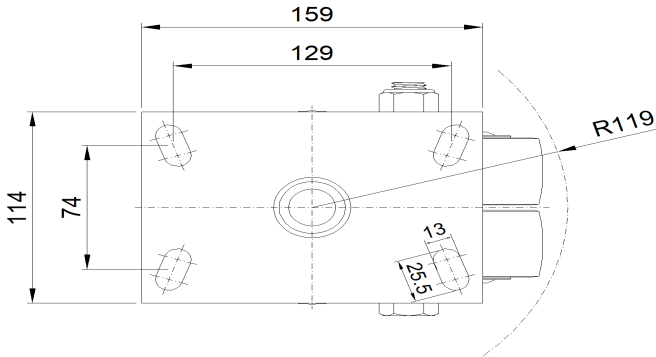
Advantages at a glance

Rolling Resistance	● ● ● ● ●
Operating Noise	● ● ● ● ●
Floor Surface Preservation	● ● ● ● ●

Dimensions



Mounting



\* For any deviation between metric and imperial spec, please refer to the metric spec.