



1152 Anti-Friction Caster Series

MRC (Transparent) Wheel Diameter × Wheel Width 150 x 40mm

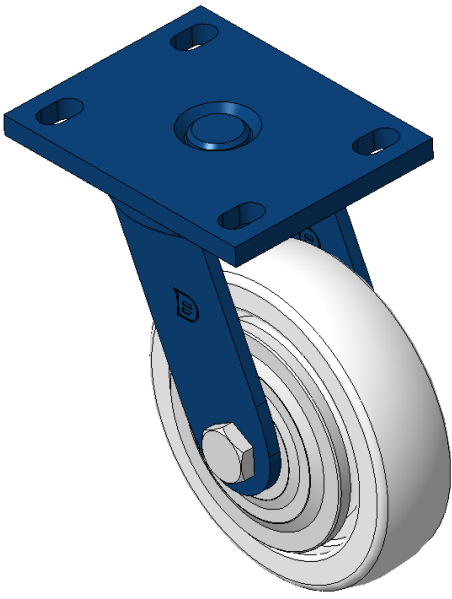
EAN

KS-11520600072011

Swivel Caster, Welded Caster Fork, blue paint finish Mounting Type - Top Plate, 110x75 Bolt Hole Spacing Reinforced Polypropylene, Natural Color wheel tread Bearing—Ball Bearing

Wheel tread: Thermoplastic (PA6)  
Wheel Center: Thermoplastic (PA6)

Drawings are for reference only and may differ from the product



Picture may differ from original product

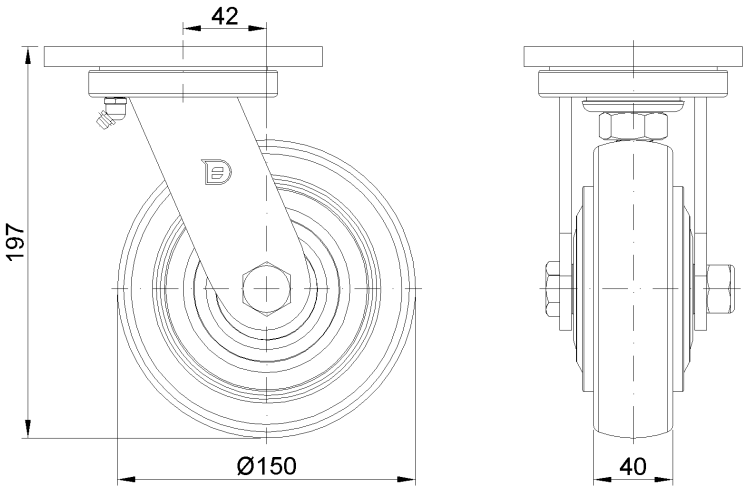
Technical Data

<input checked="" type="radio"/> Metric <input type="radio"/> Imperial	
Wheel Diameter	150mm
Wheel Width	040mm
Wheel Bearing	Wheels With Ball Bearings
Plate Size	140 x 110mm
Bolt Hole Spacing	110x75mm
Plate Hole	22 x 13mm
Offset	42mm
Swivel Interference	238mm
Overall Height	197mm
Swivel Radius	119mm
Hardness Of Tread	75±5° Shore D
Load Capacity (Dynamic)	400kgs
Load Capacity (Static)	600kgs
Temperature	-20°C to +80°C
Fork Type	Swivel Caster
Stainless	N/A
Electrical Conductivity	N/A
Anti-Static	N/A
Weight	3.36kgs
Standard	ISO22883

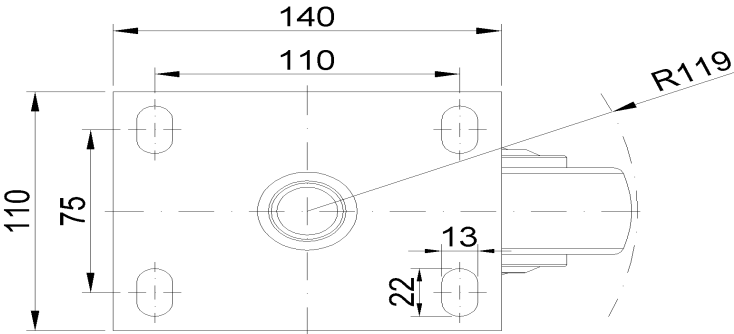
Advantages at a glance

Rolling Resistance	● ● ● ● ●
Operating Noise	● ● ○ ○ ○
Floor Surface Preservation	● ● ○ ○ ○

Dimensions



Mounting



\* For any deviation between metric and imperial spec, please refer to the metric spec.