



1152 Self-Align Casters Series

MRC (Transparent) Wheel Diameter x Wheel Width 200 x 50mm

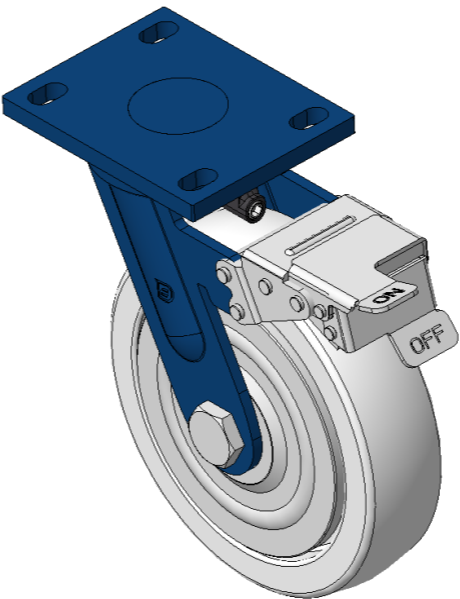
EAN

KS-11520800074741

Casters with front brake and Self-Aligned Locking system, Welded Caster Fork. Blue-painted finish, Mounting Type - Top Plate, 110x75 Bolt Hole Spacing. Reinforced Polypropylene, natural wheel tread. Bearing—Ball Bearing.

Wheel tread: Thermoplastic (PA6)
Wheel Center: Thermoplastic (PA6)

Drawings are for reference only and may differ from the product



Picture may differ from original product

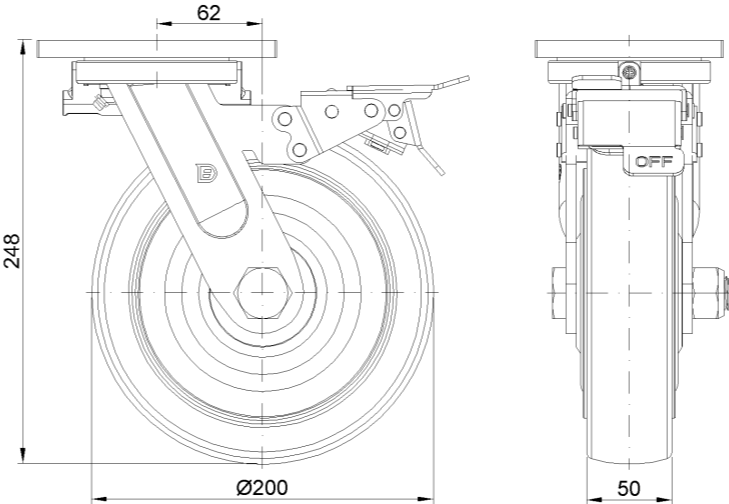
Technical Data

| | |
|--|--------------------------------|
| <input checked="" type="radio"/> Imperial <input type="radio"/> Metric | |
| Wheel Diameter | 8 " |
| Wheel Width | 2 " |
| Wheel Bearing | Wheels With Ball Bearings |
| Plate Size | 5-9/16 " x 4-3/8 " |
| Bolt Hole Spacing | 4-5/16 " x3" |
| Plate Hole | 7/8 " x 9/16 " |
| Offset | 2-1/2 " |
| Swivel Interference | 14-1/2 " |
| Overall Height | 9-15/16 " |
| Swivel Radius | 7-3/8 " |
| Hardness Of Tread | 75±5° Shore D |
| Load Capacity (Dynamic) | 992lbs |
| Load Capacity (Static) | 1488lbs |
| Temperature | -4°F to +176°F |
| Fork Type | Swivel Caster With Front Brake |
| Stainless | N/A |
| Electrical Conductivity | N/A |
| Anti-Static | N/A |
| Weight | 10.5lbs |
| Standard | ISO22883 |

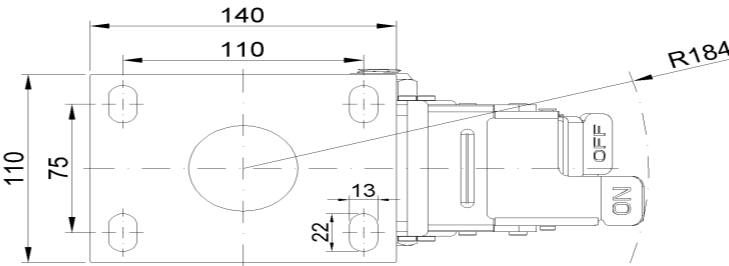
Advantages at a glance

| | |
|----------------------------|-----------|
| Rolling Resistance | ● ● ● ● ● |
| Operating Noise | ● ● ○ ○ ○ |
| Floor Surface Preservation | ● ● ○ ○ ○ |

Dimensions



Mounting



* For any deviation between metric and imperial spec, please refer to the metric spec.