



1152 Anti-Friction Caster Series

EQPU (brown round) Wheel Diameter x Wheel Width 200 x 50mm

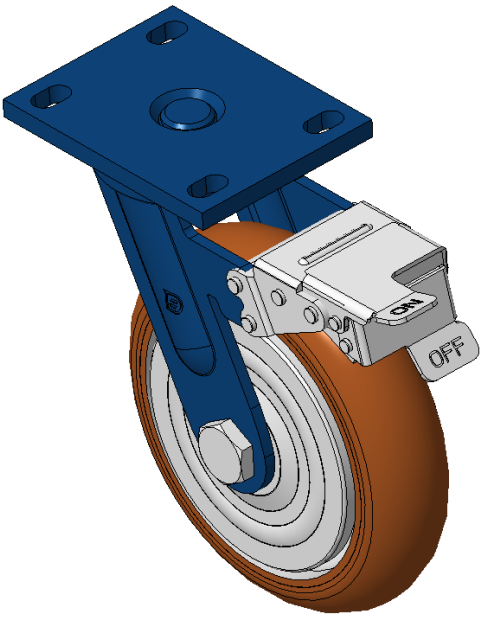
EAN

KS-11520800554161

Castors with Front Brake locking system, Welded Caster Fork Surface spray blue paint, Top Plate installation device, Hole spacing 110x75 Wheel core made of cast iron, high quality polyurethane Wheel Tread, Cast Iron brown Bearing—Ball Bearing

Wheel tread: High quality polyurethane wheel tread  
Wheel Center: iron core/cast iron core

Drawings are for reference only and may differ from the product



Picture may differ from original product

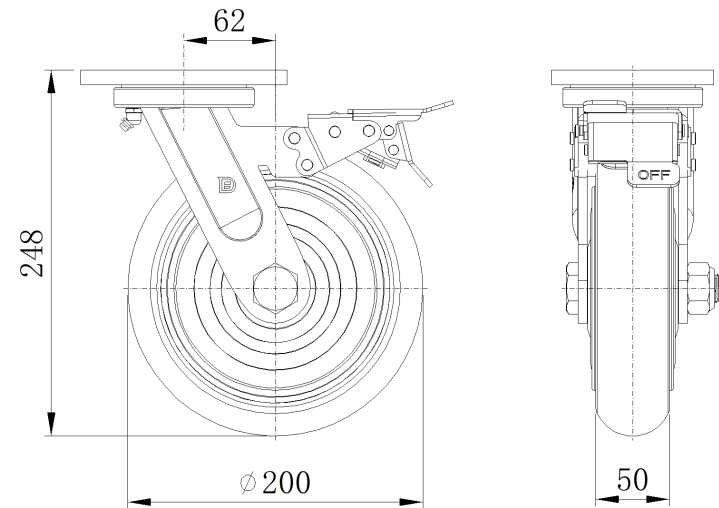
Technical Data

<input checked="" type="radio"/> Metric <input type="radio"/> Imperial	
Wheel Diameter	200mm
Wheel Width	50mm
Wheel Bearing	Wheels With Ball Bearings
Plate Size	140 x 110mm
Bolt Hole Spacing	110x75mm
Plate Hole	22 x 13mm
Offset	62mm
Swivel Interference	372mm
Overall Height	248mm
Swivel Radius	186mm
Hardness Of Tread	92±5° Shore A
Load Capacity (Dynamic)	550kgs
Load Capacity (Static)	825kgs
Temperature	-20°C to +70°C
Fork Type	Swivel Caster With Front Brake
Stainless	N/A
Electrical Conductivity	N/A
Anti-Static	N/A
Weight	6.79kgs
Standard	ISO22883

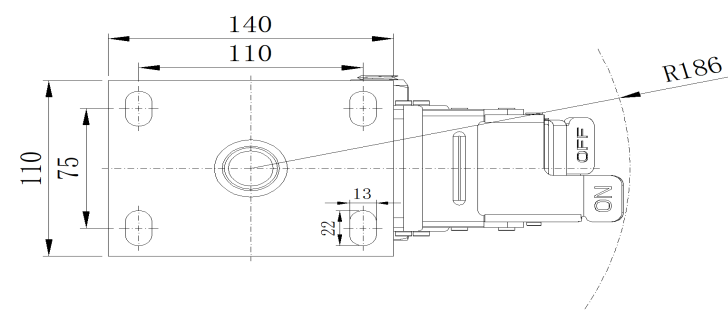
Advantages at a glance

Rolling Resistance	● ● ● ● ●
Operating Noise	● ● ● ● ●
Floor Surface Preservation	● ● ● ● ●

Dimensions



Mounting



\* For any deviation between metric and imperial spec, please refer to the metric spec.