



1152 Anti-Friction Caster Series

EQPU (brown round) Wheel Diameter x Wheel Width 200 x 50mm

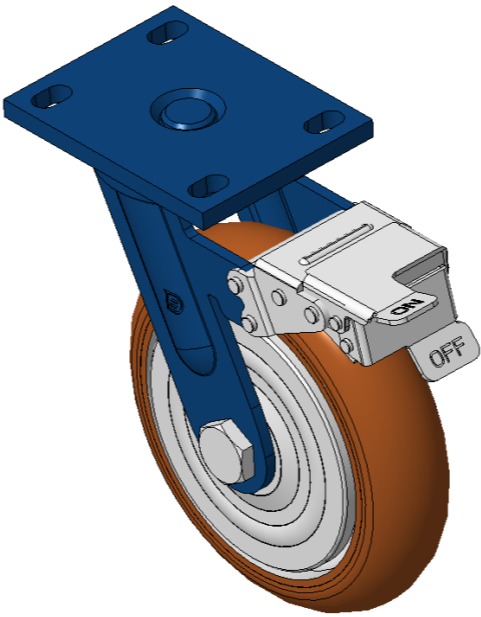
EAN

KS-11520800554161

Castors with Front Brake locking system, Welded Caster Fork Surface spray blue paint, Top Plate installation device, Hole spacing 110x75 Wheel core made of cast iron, high quality polyurethane Wheel Tread, Cast Iron brown Bearing—Ball Bearing

Wheel tread: High quality polyurethane wheel tread  
Wheel Center: iron core/cast iron core

Drawings are for reference only and may differ from the product



Picture may differ from original product

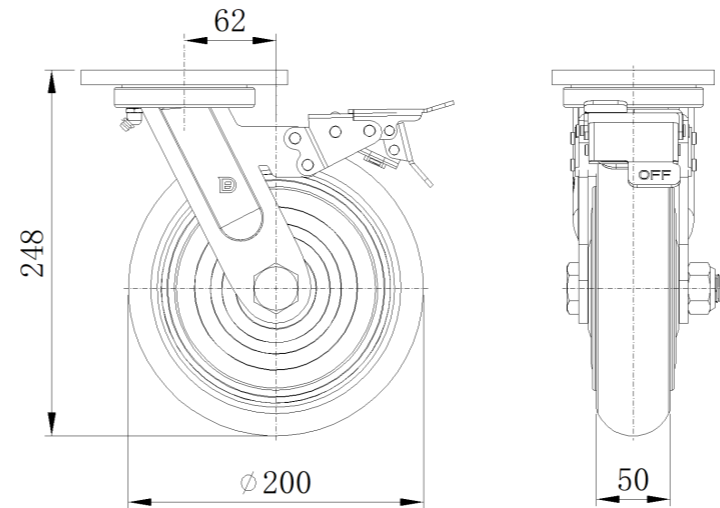
Technical Data

<input checked="" type="radio"/> Imperial <input type="radio"/> Metric	
Wheel Diameter	8 "
Wheel Width	2 "
Wheel Bearing	Wheels With Ball Bearings
Plate Size	5-9/16 " x 4-3/8 "
Bolt Hole Spacing	4-5/16 " x3"
Plate Hole	7/8 " x 9/16 "
Offset	2-1/2 "
Swivel Interference	14-3/4 "
Overall Height	9-15/16 "
Swivel Radius	7-7/16 "
Hardness Of Tread	92±5° Shore A
Load Capacity (Dynamic)	1213lbs
Load Capacity (Static)	1819lbs
Temperature	-4°F to +158°F
Fork Type	Swivel Caster With Front Brake
Stainless	N/A
Electrical Conductivity	N/A
Anti-Static	N/A
Weight	15.0lbs
Standard	ISO22883

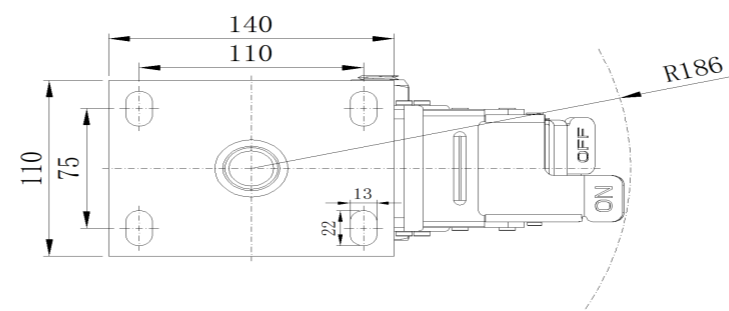
Advantages at a glance

Rolling Resistance	● ● ● ● ●
Operating Noise	● ● ● ● ●
Floor Surface Preservation	● ● ● ● ●

Dimensions



Mounting



\* For any deviation between metric and imperial spec, please refer to the metric spec.