



1152 Anti-Friction Caster Series

XPU (burgundy round) Wheel Diameter x Wheel Width 200 x 66mm

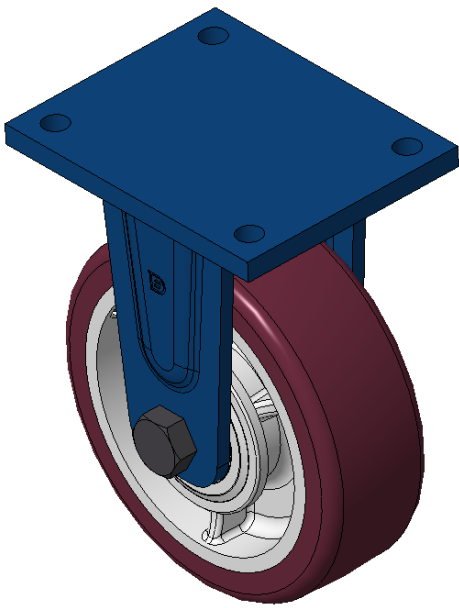
EAN

KS-11520800641011

Rigid Caster, Welded Caster Fork, blue painted finish Mounting Type - Top Plate, 140x105mm Bolt Hole Spacing Cast Iron Wheel Center, High Quality Polyurethane Wheel Tread, Cast Iron burgundy Bearings – Ball Bearings

Wheel tread: Made of high-quality polyurethane  
Wheel Center: iron core/cast iron core

Drawings are for reference only and may differ from the product



Picture may differ from original product

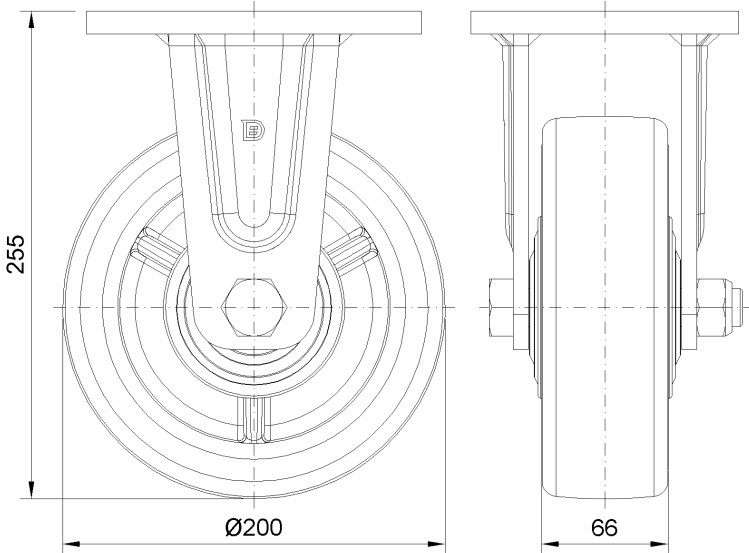
Technical Data

<input checked="" type="radio"/> Imperial <input type="radio"/> Metric	
Wheel Diameter	8 "
Wheel Width	66mm
Wheel Bearing	Wheels With Ball Bearings
Plate Size	7 " x 5-9/16 "
Bolt Hole Spacing	5-1/2"x4-1/8"
Plate Hole	5/8 "
Overall Height	10-1/16 "
Hardness Of Tread	94±5° Shore A
Load Capacity (Dynamic)	3307lbs
Load Capacity (Static)	4960lbs
Temperature	-4°F to +176°F
Fork Type	Rigid Caster
Stainless	N/A
Electrical Conductivity	N/A
Anti-Static	N/A
Weight	17.8lbs
Standard	ISO22883

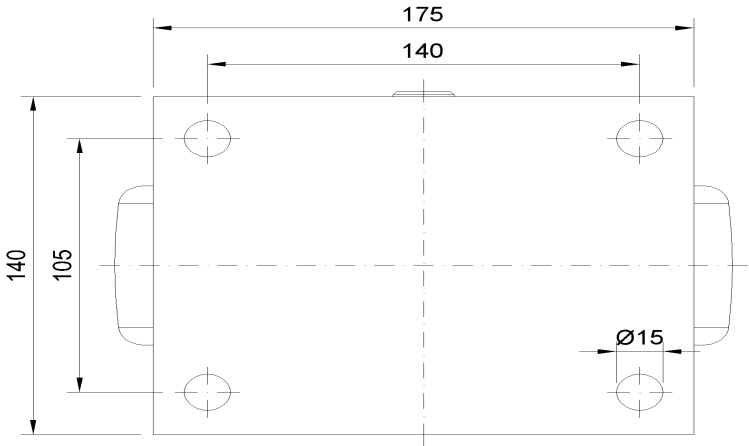
Advantages at a glance

Rolling Resistance	● ● ● ● ○
Operating Noise	● ● ● ● ○
Floor Surface Preservation	● ● ● ● ●

Dimensions



Mounting



\* For any deviation between metric and imperial spec, please refer to the metric spec.