



1155 STAT Series Caster Series (All Plastic)

PPR (Pearl Deep Grey All Plastic -1) Wheel Diameter x Wheel Width 100 x 31mm

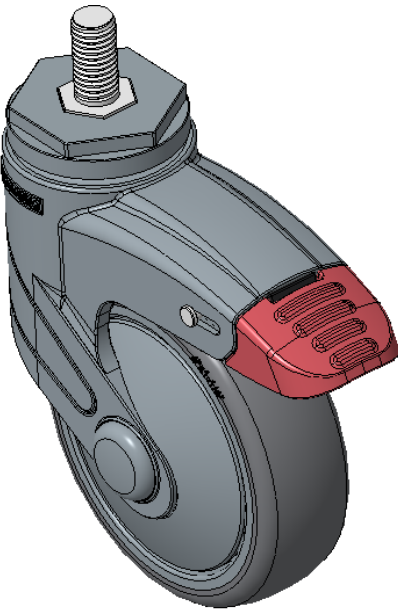
EAN

KS-11550402266013

Classic PPR wheel with Total Brake Locking system. Thread lock with polyamide Fork—M12x25 E-Coat Finish thread finish, Mounting Type - Threaded Stem mechanism High-quality Impact Resistance Polypropylene Wheel Center,High-Quality Thermoplastic Rubber (TPR) tread Dark gray, Bearing—Ball Bearing.

Wheel tread: Thermoplastic rubber elastomer (TPR)  
Wheel Center: Made of high-quality impact-resistant polypropylene

Drawings are for reference only and may differ from the product



Picture may differ from original product

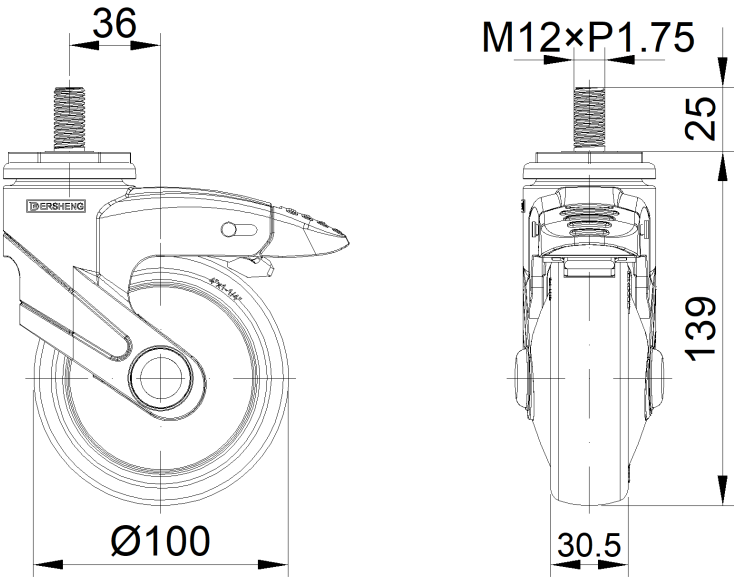
Technical Data

<input checked="" type="radio"/> Metric <input type="radio"/> Imperial	
Wheel Diameter	100mm
Wheel Width	31mm
Wheel Bearing	Wheels With Ball Bearings
Threaded Stem	M12x25
Threaded Size	25mm
Offset	36mm
Swivel Interference	226mm
Overall Height	139mm
Swivel Radius	113mm
Hardness Of Tread	85±5° Shore A
Load Capacity (Dynamic)	90kgs
Load Capacity (Static)	135kgs
Temperature	-20°C to +80°C
Fork Type	Swivel Caster With Total Brake
Stainless	N/A
Electrical Conductivity	N/A
Anti-Static	N/A
Weight	0.53kgs
Standard	ISO22883

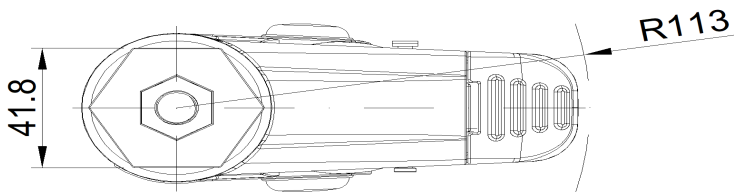
Advantages at a glance

Rolling Resistance	• • • • •
Operating Noise	• • • • •
Floor Surface Preservation	• • • • •

Dimensions



Mounting



\* For any deviation between metric and imperial spec, please refer to the metric spec.