



1155-2 Light Plastic-2 Series

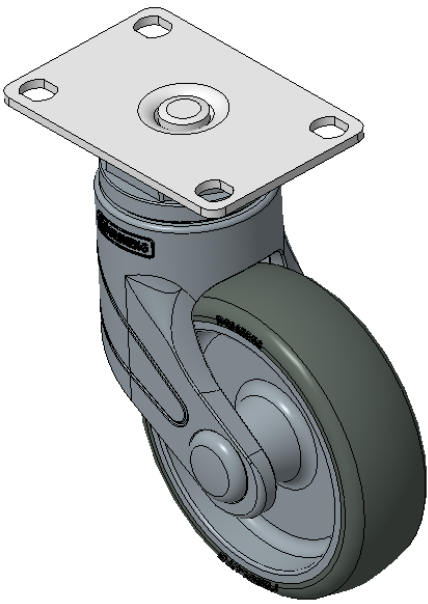
PPR (Pearlescent dark gray) Wheel Diameter × Wheel Width 100 x 31mm

A
KS-11550403262233

Actual Casters, high-grade Top Plate—75x45mm Bolt Hole Spacing
Blue-gray legs made of polyamide reinforcement, Mounting Type - Top Plate
Rust-proof, Corrosion resistant, Attractive appearance, Economical, and Smooth rotation
High-Quality Impact-Resistant Polypropylene Wheel Center, High-Quality Reinforced Polypropylene Rubber (TPR) Wheel Tread
Pearl dark gray, wheels—Plain Bearing, capless

Wheel tread: Thermoplastic rubber elastomer (TPR)
Wheel Center: Made of high-quality impact-resistant polypropylene

Drawings are for reference only and may differ from the product



Picture may differ from original product

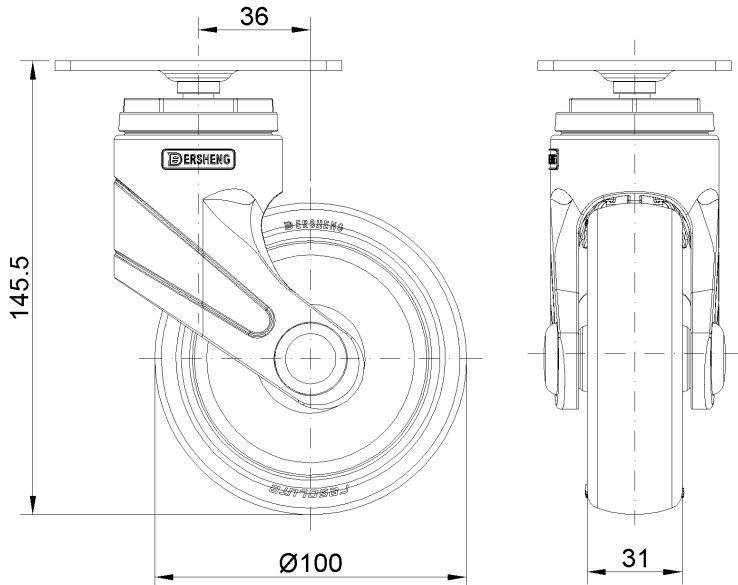
Technical Data

| | |
|--|--------------------------|
| <input checked="" type="radio"/> Metric <input type="radio"/> Imperial | |
| Wheel Diameter | 100mm |
| Wheel Width | 31mm |
| Wheel Bearing | Wheel With Plain Bearing |
| Plate Size | 92 x 62mm |
| Bolt Hole Spacing | 75 x 45mm |
| Plate Hole | 11.1 x 9.6mm |
| Offset | 36mm |
| Swivel Interference | 174mm |
| Overall Height | 145.5mm |
| Swivel Radius | 87mm |
| Hardness Of Tread | 82±5° Shore A |
| Load Capacity (Dynamic) | 50kgs |
| Load Capacity (Static) | 75kgs |
| Temperature | -20°C to +60°C |
| Fork Type | Swivel Caster |
| Stainless | N/A |
| Electrical Conductivity | N/A |
| Anti-Static | N/A |
| Weight | 0.48kgs |
| Standard | ISO22883 |

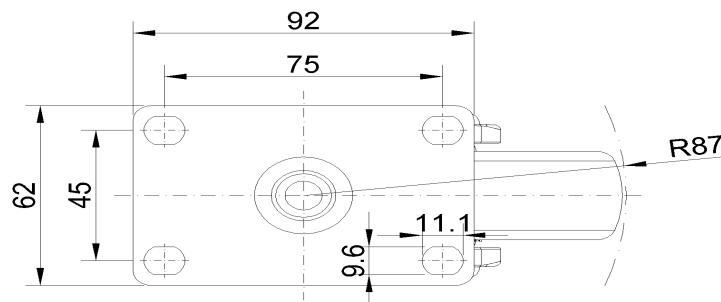
Advantages at a glance

| | |
|----------------------------|-----------|
| Rolling Resistance | ● ● ● ● ○ |
| Operating Noise | ● ● ● ● ○ |
| Floor Surface Preservation | ● ● ● ● ● |

Dimensions



Mounting



* For any deviation between metric and imperial spec, please refer to the metric spec.